

Excellent Integrated System Limited

Stocking Distributor

Click to view price, real time Inventory, Delivery & Lifecycle Information:

[Molex Connector Corporation](#)

[22-11-1141](#)

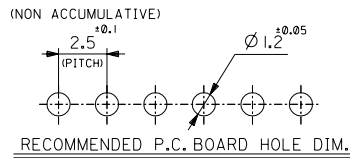
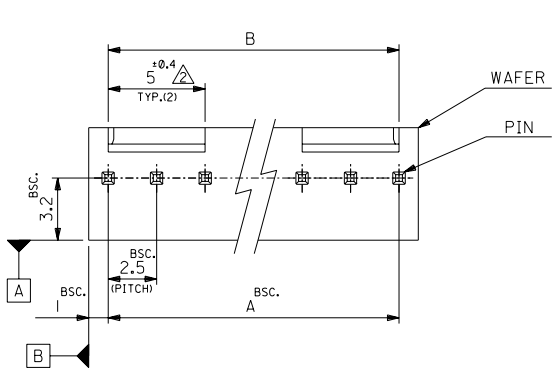
For any questions, you can email us directly:

sales@integrated-circuit.com

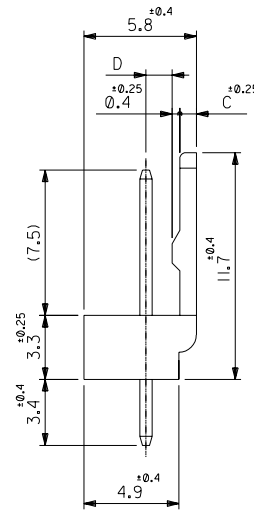
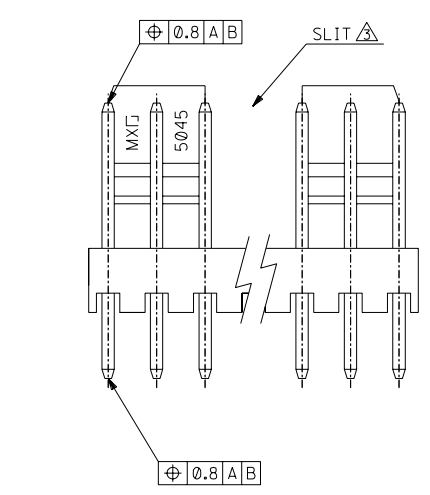
ENG. NO. SD-5045-NAG

EDP NO. 22-11-1**1

ALL DIMENSIONS IN METRIC DO NOT SCALE DRAWING



NOTES
 1. MATERIAL
 WAFER : 66NYLON UL94V-0
 PIN : ϕ 0.635
 BRASS, GOLD(0.35 μ MIN.)
 OVER NICKEL(2 μ MIN.) PLATING
 Δ TO BE APPLIED FOR 6CKT.
 AND MORE THAN 6CKT.
 Δ NO SLIT IS PROVIDED FOR 5CKT.
 AND LESS THAN 5CKT.



1.35	0.85	47.5 ^{+0.3} _{-0.45}	47.5	22-11-1201	5045-20AG	20
↑	↑	45 ^{+0.3} _{-0.45}	45	↑ -1191	↑ -19AG	19
		42.5 ^{+0.3} _{-0.45}	42.5	↑ -1181	↑ -18AG	18
		40 ^{+0.3} _{-0.45}	40	↑ -1171	↑ -17AG	17
		37.5 ^{+0.3} _{-0.45}	37.5	↑ -1161	↑ -16AG	16
		35 ^{+0.3} _{-0.45}	35	↑ -1151	↑ -15AG	15
		32.5 ^{+0.25} _{-0.4}	32.5	↑ -1141	↑ -14AG	14
		30 ^{+0.25} _{-0.4}	30	↑ -1131	↑ -13AG	13
		27.5 ^{+0.25} _{-0.4}	27.5	↑ -1121	↑ -12AG	12
		25 ^{+0.2} _{-0.4}	25	↑ -1111	↑ -11AG	11
		22.5 ^{+0.2} _{-0.4}	22.5	↑ -1101	↑ -10AG	10
		20 ^{+0.15} _{-0.35}	20	↑ -1091	↑ -09AG	9
		17.5 ^{+0.15} _{-0.35}	17.5	↑ -1081	↑ -08AG	8
		15 ^{+0.1} _{-0.3}	15	↑ -1071	↑ -07AG	7
		12.5 ^{+0.1} _{-0.3}	12.5	↑ -1061	↑ -06AG	6
		10 ^{+0.15} _{-0.35}	10	↑ -1051	↑ -05AG	5
↓	↓	7.5 ^{+0.15} _{-0.35}	7.5	↓ -1041	↓ -04AG	4
1.2	1	5 ^{+0.15} _{-0.35}	5	↓ -1031	↓ -03AG	3
1.2	1	2.5 ^{+0.15} _{-0.35}	2.5	22-11-1021	5045-02AG	2
D	C	B	A	EDP NO.	ENG. NO.	CKT.

角度 ANGLE	±3°
30以上 OVER	±0.3
10以上 30未満 UNDER	±0.25
10未満 UNDER	±0.2
一般公差 GENERAL TOLERANCES	REVISE ONLY ON CAD SYSTEM

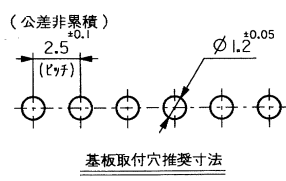
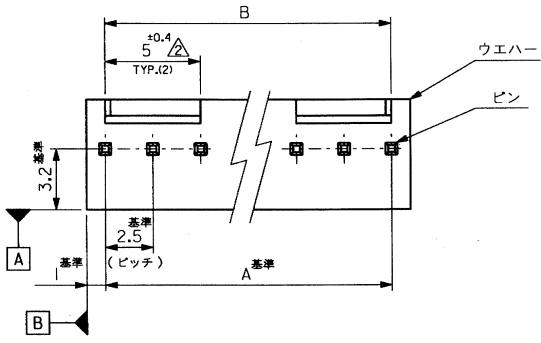
材料 MATERIAL	SEE NOTES	MOLEX-JAPAN CO.,LTD. 日本モレックス株式会社
仕上げ FINISH	—	EDP NO. 22-11-1**1
適用電線範囲 WIRE RANGE	—	ENG. NO. SD-5045-NAG
被覆外径 INS. RANGE	—	REV E
DRAWN BY '90/3/23 Y.MIZUNO	CHK'D BY '91/2/18 M.FUKUSHIMA	TITLE 名称 KK 2.5 WAFER ASS'Y WITH LOCK
APP'D BY '91/2/18 M.MENOMOTO	尺度 SCALE 5 - 1	

THIS DRAWING CONTAINS INFORMATION THAT IS PROPRIETARY TO MOLEX(JAPAN) AND SHOULD NOT BE USED WITHOUT WRITTEN PERMISSION
 本図面は日本モレックス(株)の所有する情報を含むもので 当社の許可なく複製を禁止する。 MXJ-8

ENG. NO. SD-5045-NAG

EDP NO. 22-11-1001

ALL DIMENSIONS IN METRIC DO NOT SCALE DRAWING



注記

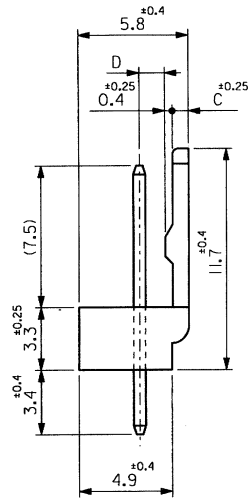
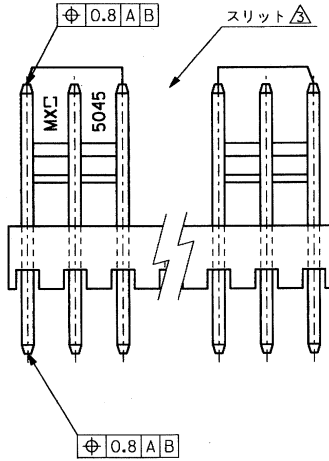
1. 材料

ウエハー: 66ナイロン, UL94V-0
 ピン: 0.635黄銅
 ニッケル下地: 2μm MIN.
 金メッキ: 0.35μm MIN.

△ 6極以上に適用

▽ 5極以下はロック部スリットなし

基板取付穴推奨寸法



1.35	0.85	47.5 ^{+0.3} _{-0.45}	47.5	22-11-1201	5045-20AG	20
↑	↑	45 ^{+0.3} _{-0.45}	45	↑	↑	19
		42.5 ^{+0.3} _{-0.45}	42.5	↑	↑	18
		40 ^{+0.3} _{-0.45}	40	↑	↑	17
		37.5 ^{+0.3} _{-0.45}	37.5	↑	↑	16
		35 ^{+0.3} _{-0.45}	35	↑	↑	15
		32.5 ^{+0.3} _{-0.45}	32.5	↑	↑	14
		30 ^{+0.25} _{-0.4}	30	↑	↑	13
		27.5 ^{+0.25} _{-0.4}	27.5	↑	↑	12
		25 ^{+0.2} _{-0.3}	25	↑	↑	11
		22.5 ^{+0.2} _{-0.3}	22.5	↑	↑	10
		20 ^{+0.15} _{-0.3}	20	↑	↑	9
		17.5 ^{+0.15} _{-0.3}	17.5	↑	↑	8
		15 ^{+0.1} _{-0.3}	15	↑	↑	7
		12.5 ^{+0.1} _{-0.3}	12.5	↑	↑	6
		10 ^{+0.15} _{-0.3}	10	↑	↑	5
1.35	0.85	7.5 ^{+0.15} _{-0.3}	7.5	↑	↑	4
1.2	1	5 ^{+0.15} _{-0.3}	5	↑	↑	3
1.2	1	2.5 ^{+0.15} _{-0.3}	2.5	↑	↑	2
D	C	B	A	EDP. NO.	ENG. NO.	極数

材料 MATERIAL	注記参照	MOLEX-JAPAN CO.,LTD. 日本モレックス株式会社	
仕上り FINISH	—	EDP. NO. 22-11-1001	
適用電線範囲 WIRE RANGE	—	ENG. NO. SD-5045-NAG	
適用外径 INS. RANGE	—	REV. E	
DRAWN BY 90/3/23 Y.MIZUNO	CHK'D BY	TITLE 名称	
DATE	DATE	KK 2.5 WAFER ASS'Y WITH LOCK	
APP'D BY	SCALE 5-1		

角度 ANGLE	±3°
30以上 OVER	±0.3
10以上 未滿 30 UNDER	±0.25
10未滿 UNDER	±0.2
一般公差 GENERAL TOLERANCES	

変更及び再作図 (J00330)	Y.M	30/4/1
変更内容	DR.	DATE
REV. RECORD	CHK.	DATE
REVISION RECORD	CHK.	DATE

THIS DRAWING CONTAINS INFORMATION THAT IS PROPRIETARY TO MOLEX/JAPAN AND SHOULD NOT BE USED WITHOUT WRITTEN PERMISSION
 本図面は日本モレックス(株)の所有する情報を含むもので同社の許可なく複製を禁止する。 MXJ-8