

## Excellent Integrated System Limited

Stocking Distributor

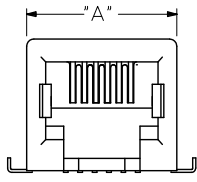
Click to view price, real time Inventory, Delivery & Lifecycle Information:

[Molex Connector Corporation](#)  
[43743-8103](#)

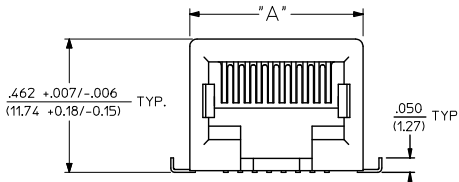
For any questions, you can email us directly:

[sales@integrated-circuit.com](mailto:sales@integrated-circuit.com)

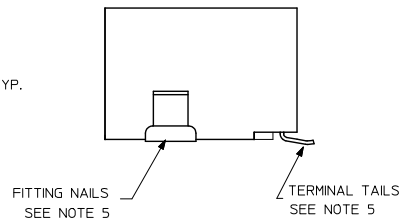
| HOUSING SIZE | CIRCUIT SIZE | DIM. A          | DIM. B         |
|--------------|--------------|-----------------|----------------|
| 6            | 6            | .520<br>(13.21) | .250<br>(6.35) |
| 6            | 4            | .520<br>(13.21) | .150<br>(3.81) |
| 6            | 2            | .520<br>(13.21) | .050<br>(1.27) |
| 8            | 8            | .600<br>(15.24) | .350<br>(8.89) |
| 8            | 6            | .600<br>(15.24) | .250<br>(6.35) |



6 CIRCUIT ASSEMBLY



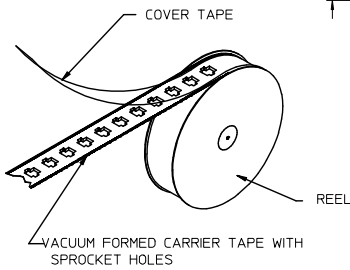
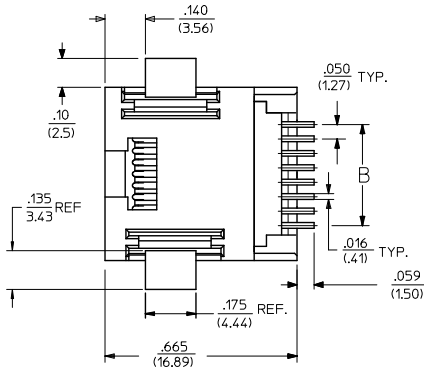
8 CIRCUIT ASSEMBLY



FITTING NAILS  
SEE NOTE 5

TERMINAL TAILS  
SEE NOTE 5

| ASSEMBLY ITEM NO. | CONNECTOR SIZE | CIRCUIT SIZE | TERMINAL PLATING | TAPE & REEL PACKAGING No. | VOIDED CIRCUITS |
|-------------------|----------------|--------------|------------------|---------------------------|-----------------|
| 43743-6001        | 6              | 6            | A                | PK-70873-7001             | NA              |
| 43743-6002        | 6              | 6            | B                |                           |                 |
| 43743-6003        | 6              | 6            | C                |                           |                 |
| 43743-6101        | 6              | 4            | A                |                           |                 |
| 43743-6102        | 6              | 4            | B                |                           |                 |
| 43743-6103        | 6              | 4            | C                | PK-70873-7001             |                 |
| 43743-8101        | 8              | 8            | A                | PK-70873-7002             |                 |
| 43743-8102        | 8              | 8            | B                |                           |                 |
| 43743-8103        | 8              | 8            | C                |                           |                 |
| 43743-8201        | 8              | 6            | A                |                           |                 |
| 43743-8202        | 8              | 6            | B                |                           |                 |
| 43743-8203        | 8              | 6            | C                |                           |                 |
| 43743-8301        | 8              | 4            | A                |                           |                 |
| 43743-8302        | 8              | 4            | B                |                           |                 |
| 43743-8303        | 8              | 4            | C                | PK-70873-7002             |                 |
| 43743-6201        | 6              | 2            | A                | PK-70873-7001             |                 |
| 43743-6202        | 6              | 2            | B                | PK-70873-7001             |                 |
| 43743-6203        | 6              | 2            | C                | PK-70873-7001             | NA              |

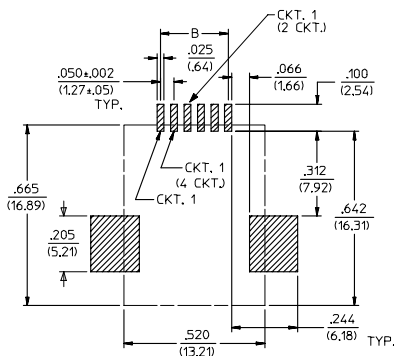


TAPE AND REEL PACKAGING

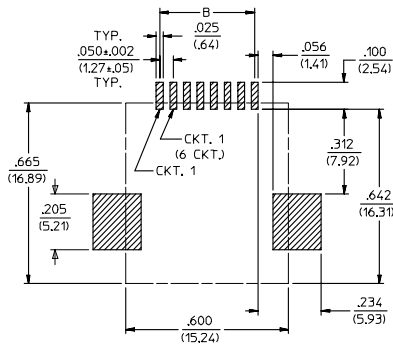
- NOTES:
- MATERIAL:
    - HOUSING & INSULATOR: NYLON(PIA), GLASS FILLED, UL94V-0, COLOR: BLACK
    - TERMINALS: PHOSPHOR BRONZE, .012/(0.30) THICK
    - FITTING NAILS: BRASS, .010/(0.25) THICK
  - FINISH:
    - TERMINALS:
      - A = SELECT GOLD IN CONTACT AREA: .000050/(0.00127) MIN.
      - \*SELECT MATTE TIN IN PC TAIL AREA: .000100/(0.00254) MN.
      - WITH OVERALL NICKEL UNDERPLATE: .000050/(0.00127) MIN.
    - B = SELECT GOLD IN CONTACT AREA: .000030/(0.00076) MIN.
    - \*SELECT MATTE TIN IN PC TAIL AREA: .000100/(0.00254) MN.
    - WITH OVERALL NICKEL UNDERPLATE: .000050/(0.00127) MIN.
  - C = SELECT GOLD IN CONTACT AREA: .000015/(0.00038) MIN.
  - \*SELECT MATTE TIN IN PC TAIL AREA: .000100/(0.00254) MN.
  - WITH OVERALL NICKEL UNDERPLATE: .000050/(0.00127) MIN.
  - FITTING NAILS:
    - \*100 MICROINCHES MATTE TIN OVER 50 MICROINCHES NICKEL UNDERPLATE
    - \*THE PRIMARY SHIPPING CARTON WILL BE LABELED "COMPLIANT TO RoHS DIRECTIVE 2002/95/EC AND ELV ANNEX II OF DIRECTIVE 2000/53/EC". CARTONS WITHOUT THIS LABEL MAY CONTAIN PRODUCT WITH TIN-LEAD IN THE PC TAILS AND/OR FITTING NAILS.
  - PRODUCT SPECIFICATION AND PROCESSING PARAMETERS: PS-43743-0001.
  - PACKAGING SPECIFICATION:
    - CONNECTOR ASSEMBLIES TO BE PACKAGED USING TAPE & REEL SYSTEM.
  - COPLANARITY SPECIFICATION:
    - WHEN AN ASSEMBLY IS PLACED UPON A LEVEL SURFACE, THE MAXIMUM GAP BETWEEN THE LEVEL SURFACE AND ALL TERMINAL TAILS AND BOTH FITTING NAILS IS .006/(0.15).
  - FOR ASSEMBLIES HAVING VOIDED CIRCUITS, THE TAIL PORTION IS CUT AND REMOVED. THE MATING PORTION OF THE TERMINAL REMAINS INTACT. VOIDED CIRCUITS MUST BE THE SAME FOR BOTH PARTS.
  - CONFORMS TO FCC REGULATION PART 68.5 FOR MODULAR JACKS.
  - THIS PART CONFORMS TO CLASS B REQUIREMENTS OF COSMETIC SPECIFICATION PS-45499-002.

|     |     |
|-----|-----|
| 2   | H   |
| 1   | J3  |
| SHT | REV |

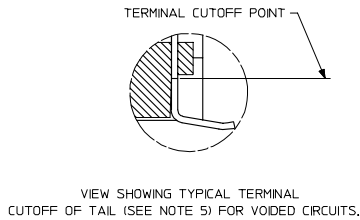
|   |                               |                                       |  |   |  |                                |                      |                            |  |  |
|---|-------------------------------|---------------------------------------|--|---|--|--------------------------------|----------------------|----------------------------|--|--|
| REVISED NOTES<br>DEC NO: UCP2009-1244<br>DRAWN: JACUSTE/ELR/2008/12/10<br>CHK'D: J.BELL<br>APPR'D: S.MITH<br>2008/12/10 | QUALITY SYMBOLS<br>▽=0<br>▽=0 | GENERAL TOLERANCES (UNLESS SPECIFIED) |  | DIMENSION STYLE<br>IN/MM  |  | SCALE<br>1:1                   | DESIGN UNITS<br>INCH | THIRD ANGLE PROJECTION     |  |  |
|   |                               | 4 PLACES ± --- ± ---                  |  | DRAWN BY<br>PEARSON   |  | DATE<br>6/18/96                |                      | SURFACE MOUNT MODULAR JACK |  |  |
|   |                               | 3 PLACES ± --- ± .010                 |  | CHECKED BY<br>PEARSON   |  | DATE<br>6/18/96                |                      |                            |  |  |
|   |                               | 2 PLACES ± 0.25 ± .014                |  | APPROVED BY<br>EDGLEY   |  | DATE<br>6/18/96                |                      | MOLEX INCORPORATED         |  |  |
| 1 PLACE ± 0.36 ± ---  |                               | ANGULAR ± 1/2°                        |  | MATERIAL NO.<br>SEE CHARTS  |  | DOCUMENT NO.<br>SDA-43743-**** |                      | SHEET NO.<br>1 OF 2        |  |  |
| DRAFT WHERE APPLICABLE MUST REMAIN WITHIN DIMENSIONS  |                               |                                       |  | THIS DRAWING CONTAINS INFORMATION THAT IS PROPRIETARY TO MOLEX INCORPORATED AND SHOULD NOT BE USED WITHOUT WRITTEN PERMISSION |  |                                |                      |                            |  |  |



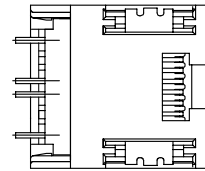
PC BOARD LAYOUT FOR 6 POSITION HOUSING (COMPONENT SIDE OF BOARD)



PC BOARD LAYOUT FOR 8 POSITION HOUSING (COMPONENT SIDE OF BOARD)



VIEW SHOWING TYPICAL TERMINAL CUTOFF OF TAIL (SEE NOTE 5) FOR VOIDED CIRCUITS.



TYPICAL VIEW SHOWING VOIDED CIRCUIT (CIRCUITS 2,3,6 & 7 SHOWN VOIDED)

|  |                               |  |  |   |                   |  |                    |  |
|--|-------------------------------|--|--|---|-------------------|--|--------------------|--|
| SEE SHEET ONE<br>IEC NO. UCP2004-0798<br>DRAWN:LSCHMIDT 2004/07/05<br>CHKD:LSCHMIDT 2004/07/05<br>APPR:FSMITH 2004/07/08 | QUALITY SYMBOLS<br>▽-0<br>▽-0 | GENERAL TOLERANCES (UNLESS SPECIFIED)                |  | SCALE ---   | DESIGN UNITS INCH | THIRD ANGLE PROJECTION   | REVISE ON CAD ONLY |  |
|  |                               |  |  | DIMENSION STYLE IN/MM   |                   | TITLE  |                    |  |
|  |                               |  |  | DRAWN BY DATE<br>PEARSON 06/18/96   |                   | SURFACE MOUNT MODULAR JACK   |                    |  |
|  |                               | CHECKED BY DATE<br>PEARSON 06/18/96                  |  | APPROVED BY DATE<br>EDGLEY 06/18/96   |                   | MATERIAL NO. DOCUMENT NO. SHEET NO.<br>SEE TABLE SDA-43743-**** 2 OF 2 |                    |  |
|  |                               | DRAFT WHERE APPLICABLE MUST REMAIN WITHIN DIMENSIONS |  | THIS DRAWING CONTAINS INFORMATION THAT IS PROPRIETARY TO MOLEX INCORPORATED AND SHOULD NOT BE USED WITHOUT WRITTEN PERMISSION |                   |  |                    |  |