

Excellent Integrated System Limited

Stocking Distributor

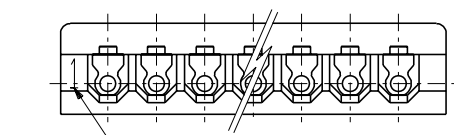
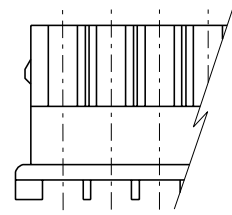
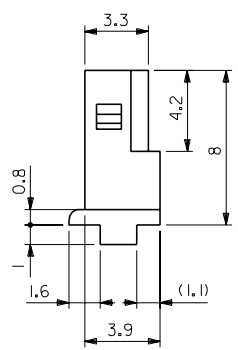
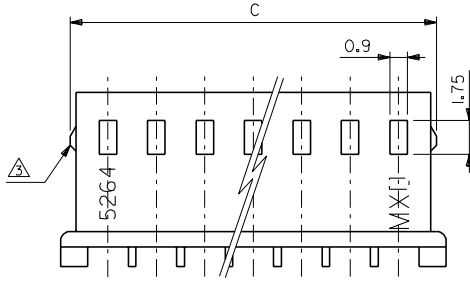
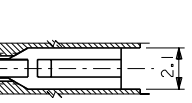
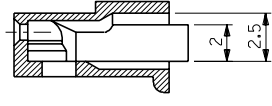
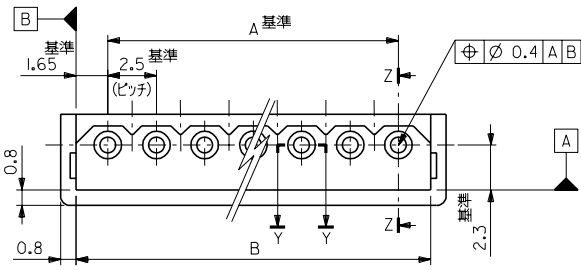
Click to view price, real time Inventory, Delivery & Lifecycle Information:

[Molex Connector Corporation](#)
[50-37-5123](#)

For any questions, you can email us directly:
sales@integrated-circuit.com

EDP NO. 50-37-5**3 ENG. NO. SD-5264-N

DIMENSIONS IN METRIC DO NOT SCALE DRAWING



CIRCUIT NO.

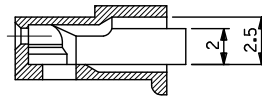
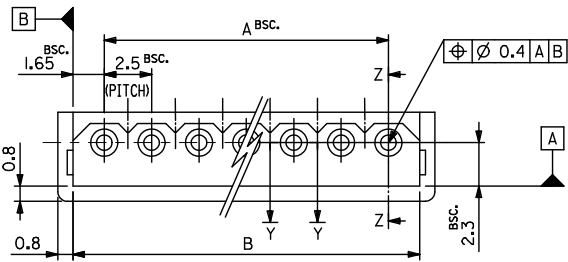
- 注記:
 1. 適合端子: 5263PBT
 2. 嵌合相手: 5267シリーズ, 5268シリーズ
 △ 9極以上はロックなし。

	38.3	35	50-37-5153	5264-15	15	
	35.8	32.5	-5143	-14	14	
	33.3	30	-5133	-13	13	
	30.8	27.5	-5123	-12	12	
	28.3	25	-5113	-11	11	
	25.8	22.5	-5103	-10	10	
	23.3	20	-5093	-09	9	
	21.4	20.8	17.5	-5083	-08	8
	18.9	18.3	15	-5073	-07	7
	16.4	15.8	12.5	-5063	-06	6
	13.9	13.3	10	-5053	-05	5
	11.4	10.8	7.5	-5043	-04	4
	8.9	8.3	5	-5033	-03	3
	6.4	5.8	2.5	50-37-5023	5264-02	2
C	B	A	EDP NO.	ENG.NO.	極数	

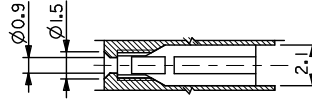
材料 MATERIAL 66ナイロン UL94V-0		MOLEX-JAPAN CO.,LTD. 日本モレックス株式会社	
仕上げ FINISH		EDP NO. 50-37-5**3	
適用電線範囲 WIRE RANGE		ENG. NO. SD-5264-N	
被覆外径 INS. RANGE		REV H	
角度 ANGLE	±3°	DRAWN BY K.TOJID '91/7/26	
30以上 OVER	+0.3	CHK'D BY M.FUKUSHIMA '91/07/30	
10以上 未満 UNDER	+0.25	APP'D BY M.ENOMOTO '91/07/30	
10未満 UNDER	+0.2	尺度 SCALE 5-1	
一般公差 GENERAL TOLERANCES	REVISION RECORD	TITLE 名称 2.5 LOW PROFILE RECEPTACLE HOUSING	

THIS DRAWING CONTAINS INFORMATION THAT IS PROPRIETARY TO MOLEX(JAPAN) AND SHOULD NOT BE USED WITHOUT WRITTEN PERMISSION
 本図面は日本モレックス(株)の所有する情報を含むもので 当社の許可なく複製を禁止する。 MXJ-8

10 9 8 7 6 5 4 3 2 1

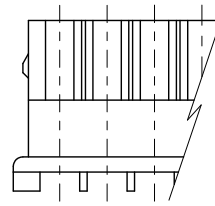
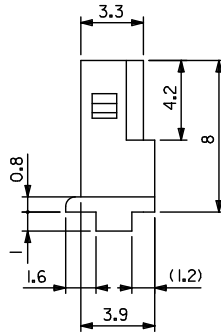
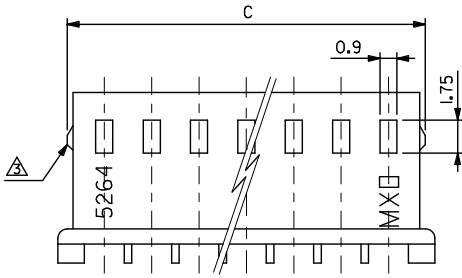


SECT.Z-Z



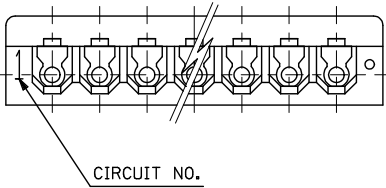
SECT.Y-Y

- NOTES:
 1. SUITABLE TERMINAL : 5263SERIES
 2. MATES WITH : 5267SERIES,5268SERIES
 3. 9 CIRCUITS OR MORE WITHOUT LOOK.



	48.3	45	50-37-5193	5264-19	19	
	43.3	40	-5173	-17	17	
	38.3	35	-5153	-15	15	
	35.8	32.5	-5143	-14	14	
	33.3	30	-5133	-13	13	
	30.8	27.5	-5123	-12	12	
	28.3	25	-5113	-11	11	
	25.8	22.5	-5103	-10	10	
	23.3	20	-5093	-09	9	
	21.4	20.8	17.5	-5083	-08	8
	18.9	18.3	15	-5073	-07	7
	16.4	15.8	12.5	-5063	-06	6
	13.9	13.3	10	-5053	-05	5
	11.4	10.8	7.5	-5043	-04	4
	8.9	8.3	5	-5033	-03	3
	6.4	5.8	2.5	50-37-5023	5264-02	2

MATERIAL:
66 NYLON, UL94V-0



PART NUMBERS VOIDED EC NO. J2016-1314 DRAWING CHYK: 2016/06/29 APPR: Y0110 2016/07/08	GENERAL TOLERANCES (UNLESS SPECIFIED)		DIMENSION STYLE		SCALE	DESIGN UNITS	THIRD ANGLE PROJECTION
	0.25 UNDER	±0.03	MM ONLY		5:1	METRIC	☉
	0.25 OVER	0.5 UNDER	DRAWN BY	DATE	TITLE		
	0.5 OVER	1.0 UNDER	K. TOJO	1991/11/05	2.5 LOW PROFILE RECEPTACLE HOUSING		
	1.0 OVER	10 UNDER	CHECKED BY	DATE	molex		
10 OVER	30 UNDER	M. FUKUSHIMA	1992/01/15	MATERIAL NO.		DOCUMENT NO.	SHEET NO.
30 OVER	±0.2	M. ENOMOTO	1992/01/15	SEE CHART		SD-5264-N	1 OF 1
ANGULAR	±3 °	THIS DRAWING CONTAINS INFORMATION THAT IS PROPRIETARY TO MOLEX ELECTRONIC TECHNOLOGIES, LLC AND SHOULD NOT BE USED WITHOUT WRITTEN PERMISSION					
DRAFT WHERE APPLICABLE MUST REMAIN WITHIN DIMENSIONS							

9 8 7 6 5 4 3 2 1