

Excellent Integrated System Limited

Stocking Distributor

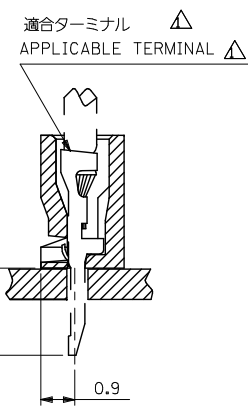
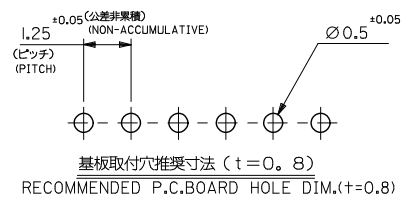
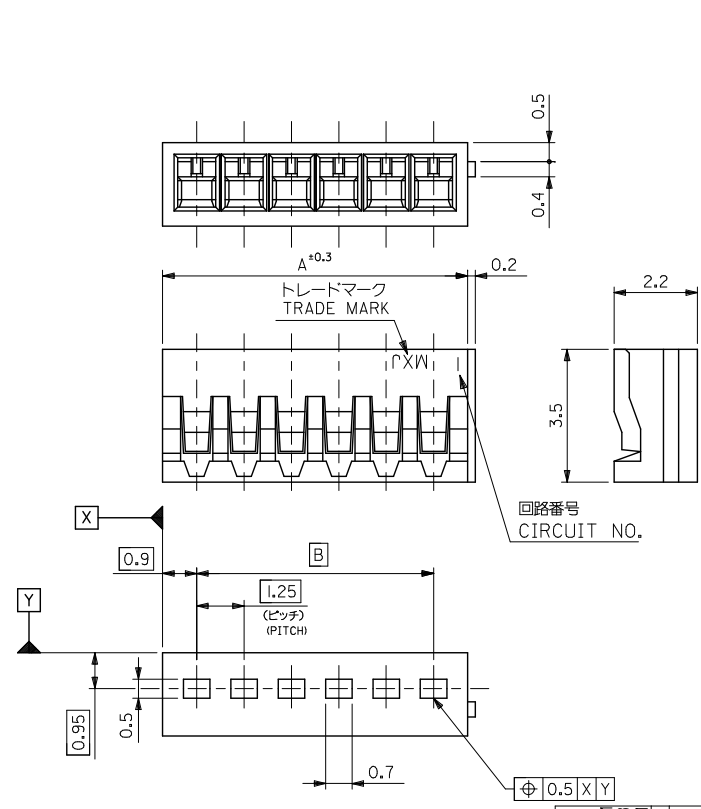
Click to view price, real time Inventory, Delivery & Lifecycle Information:

[Molex Connector Corporation](#)
[51022-0800](#)

For any questions, you can email us directly:

sales@integrated-circuit.com

10 9 8 7 6 5 4 3 2 1



注記
NOTE
△ 適合ターミナル : 50061-8*00
50080-8*00
△ APPLICABLE TERMINAL : 50061-8*00
50080-8*00

17.5	19.3	51022-1500	15
16.25	18.05	-1400	14
13.75	15.55	-1200	12
12.5	14.3	-1100	11
11.25	13.05	-1000	10
8.75	10.55	-0800	8
6.25	8.05	-0600	6
5	6.8	-0500	5
3.75	5.55	-0400	4
2.5	4.3	-0300	3
1.25	3.05	51022-0200	2
B	A	ENG. NO.	検 Ckt.No.

材料 MATERIAL
ポリエステル, UL94V-0
POLYESTER, UL94V-0
仕上げ FINISH
適用電線範囲 WIRE RANGE
被覆外径 INS. RANGE

REVISED	2016/02/01	2016/02/03	2016/03/01
DRW:KONORI	CHKD:SAKIYAMA	APPR:KASAKAWA	
DESCRIPTION	GENERAL TOLERANCES (UNLESS SPECIFIED)		
10 UNDER	±0.2	DIMENSION STYLE MM ONLY	
10 OVER 30 UNDER	±0.25	SCALE 10:1	
30 OVER	±0.3	DESIGN UNITS METRIC	
ANGULAR	±3°	THIRD ANGLE PROJECTION	
DRAFT WHERE APPLICABLE MUST REMAIN WITHIN DIMENSIONS			
DRAWN BY H. IJIMA		DATE 1996/05/29	TITLE 1.25 BOARD IN CONN HSG
CHECKED BY M. FUKUSHIMA		DATE 1996/05/29	
APPROVED BY M. ENOMOTO		DATE 1996/05/29	
MATERIAL NO.		DOCUMENT NO. SD-51022-001	SHEET NO. 1 OF 1
SIZE A3 THIS DRAWING CONTAINS INFORMATION THAT IS PROPRIETARY TO MOLEX INCORPORATED AND SHOULD NOT BE USED WITHOUT WRITTEN PERMISSION			