

Excellent Integrated System Limited

Stocking Distributor

Click to view price, real time Inventory, Delivery & Lifecycle Information:

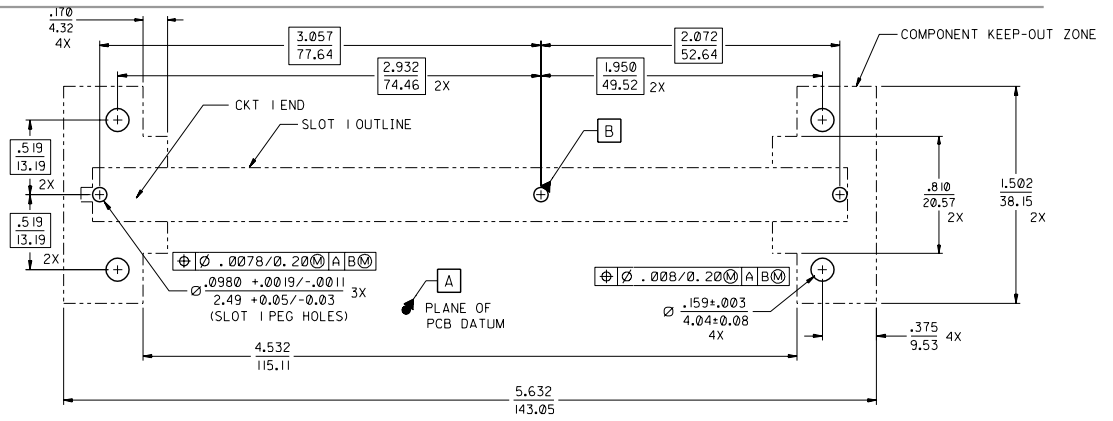
[Molex Connector Corporation](#)
[73964-0002](#)

For any questions, you can email us directly:

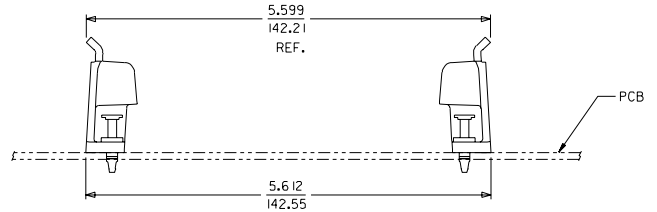
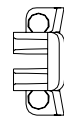
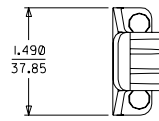
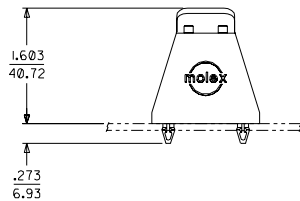
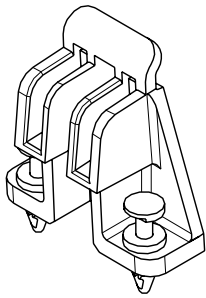
sales@integrated-circuit.com

- NOTES:
1. MATERIAL: THERMOPLASTIC
COLOR: BLACK
 2. FINISH: NONE
 3. PRODUCT SPECIFICATION: NONE
 4. THIS HARDWARE PACKAGE IS FOR USE WITH MOLEX SLOT I CONNECTOR.

MATERIAL NUMBER	PACKAGING STYLE
73964-0001	TRAY PACK
73964-0002	INDIVIDUAL BAG (2 PCS)



RECOMMENDED PCB LAYOUT
(CONNECTOR SIDE)
(SCALE 2:1)



INITIAL RELEASE EC No. JCP/998-0003 DRAWN: LAURX 98/02/21 CHK: LAURX 98/02/21 APPR: REGNIER 98/03/05	QUALITY SYMBOLS	GENERAL TOLERANCES: (UNLESS SPECIFIED)	SCALE 1:1	DESIGN UNITS <input type="checkbox"/> mm <input checked="" type="checkbox"/> INCH	THIRD ANGLE PROJECTION	DIMENSIONS: <input type="checkbox"/> mm <input checked="" type="checkbox"/> INCH <input type="checkbox"/> mm ONLY	SHT 1	REV
	MAJOR CRITICAL	4 PLACES ±0. -- ±. -- 3 PLACES ±0. -- ±0.1 2 PLACES ±0.25 ±. -- 1 PLACE ±0. -- ±. --	mm INCH	DRAWN BY & DATE LAURX 98/02/27	CHECKED BY & DATE LAURX 98/02/27	TITLE: SLOT I - LOW COST RM WITH PLASTIC FASTENERS SALES DRAWING	REVISE ON CAD ONLY	
REV A	ANGULAR: ±1/2°	DRAFT WHERE APPLICABLE MUST REMAIN WITHIN DIMENSIONS	CAD FILENAME S739640.LDGN	MATERIAL NO. SEE CHART	DRAWING NO. SD-73964-002	MOLEX INCORPORATED	SHEET NO. 1 OF 1	SIZE C