

## Excellent Integrated System Limited

Stocking Distributor

Click to view price, real time Inventory, Delivery & Lifecycle Information:

[Sumida Corporation](#)  
[CDRH60D43RNP-100MC](#)

For any questions, you can email us directly:

[sales@integrated-circuit.com](mailto:sales@integrated-circuit.com)

# SMD Power Inductor CDRH60D43R



### Description

- Ferrite drum core construction
- Magnetically shielded
- L × W × H: 6.3 × 6.3 × 4.5 mm Max.
- Product weight: 0.55g(Ref.)
- Moisture Sensitivity Level: 1
- RoHS compliance.

### Environmental Data

- Operating temperature range: -40°C ~ +105°C (including coil's self temperature rise)
- Storage temperature range: -40°C ~ +105°C
- Solder reflow temperature: 260 °C peak.

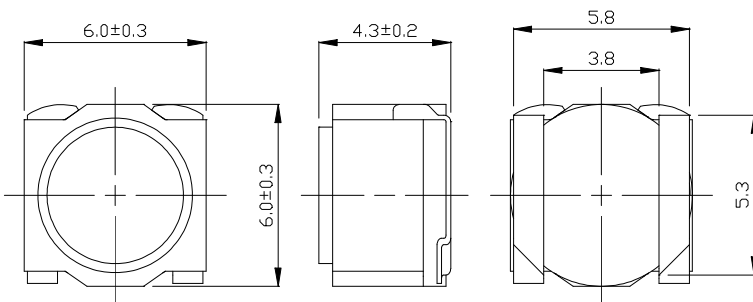
### Packaging

- Carrier tape and reel packaging
- 13.0" diameter reel
- 1500pcs per reel

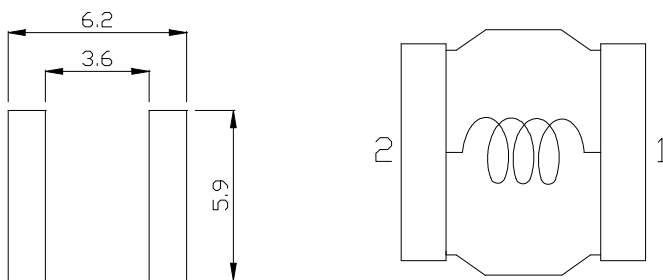
### Applications

- Ideally used in slim TV, car navigation etc as DC-DC converter inductors.

### Dimension - [mm]



### Land pattern and Schematics - [mm]



# SMD Power Inductor CDRH60D43R



## Electrical Characteristics

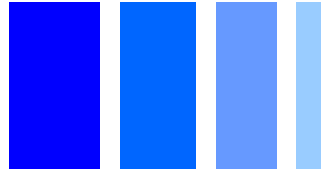
Part No.	Stamp	Inductance ( $\mu$ H) [Within] ※1	D.C.R. ( $m\Omega$ ) [within ](at 20°C)	Saturation current (A) ※2		Temperature rise current (A) ※3
				(at 20°C)	(at 105°C)	
CDRH60D43RNP-1R5NC	B	1.5 ± 30%	15 ± 25%	5.80	4.80	5.20
CDRH60D43RNP-2R2NC	C	2.2 ± 30%	17 ± 25%	4.80	4.00	4.40
CDRH60D43RNP-3R3NC	D	3.3 ± 30%	22 ± 25%	4.40	3.60	4.10
CDRH60D43RNP-4R7MC	E	4.7 ± 20%	26 ± 25%	3.50	2.80	3.80
CDRH60D43RNP-6R8MC	F	6.8 ± 20%	31 ± 25%	3.10	2.50	3.45
CDRH60D43RNP-100MC	G	10 ± 20%	38 ± 25%	2.60	2.00	2.90
CDRH60D43RNP-150MC	H	15 ± 20%	78 ± 25%	2.10	1.60	1.98
CDRH60D43RNP-220MC	J	22 ± 20%	118 ± 20%	1.80	1.30	1.55
CDRH60D43RNP-330MC	K	33 ± 20%	178 ± 20%	1.45	1.12	1.33
CDRH60D43RNP-470MC	L	47 ± 20%	270 ± 20%	1.20	0.90	1.04
CDRH60D43RNP-680MC	M	68 ± 20%	325 ± 20%	1.00	0.75	0.90
CDRH60D43RNP-101MC	N	100 ± 20%	415 ± 20%	0.85	0.66	0.82
CDRH60D43RNP-151MC	P	150 ± 20%	670 ± 20%	0.68	0.52	0.65
CDRH60D43RNP-221MC	Q	220 ± 20%	1030 ± 20%	0.56	0.44	0.49
CDRH60D43RNP-331MC	R	330 ± 20%	1325 ± 20%	0.47	0.38	0.45

※1 Measuring condition Inductance at 100kHz .

※2 Saturation current: The value of DC current when the inductance decreases to 70% of its nominal.

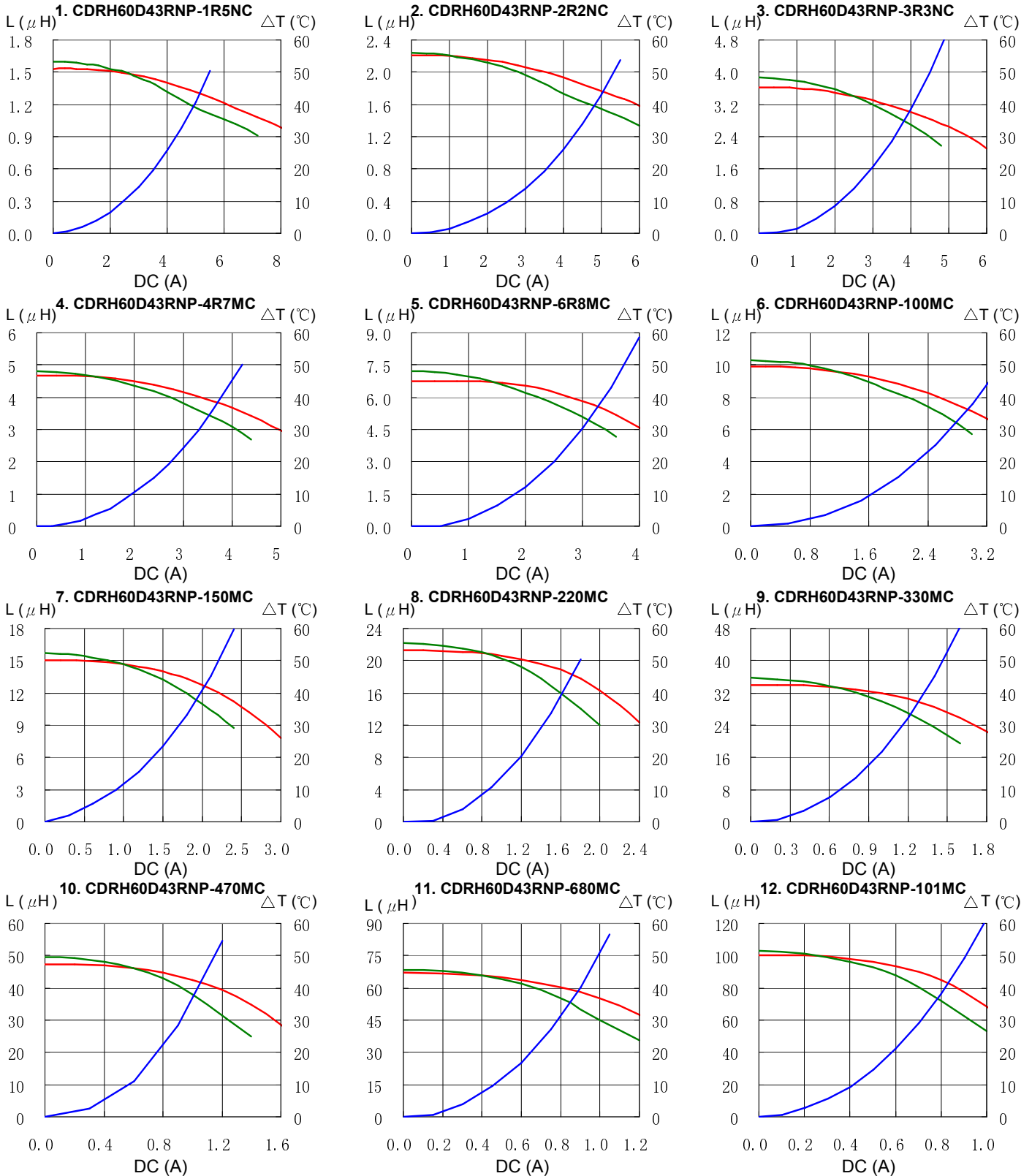
※3 Temperature rise current: The value of DC current when the temperature rise is  $\Delta T=40^{\circ}\text{C}$ ( $T_a=20^{\circ}\text{C}$ ).

# SMD Power Inductor CDRH60D43R



## Saturation Current & Temperature Rise Graph

— L (20°C) — L (105°C) — ΔT

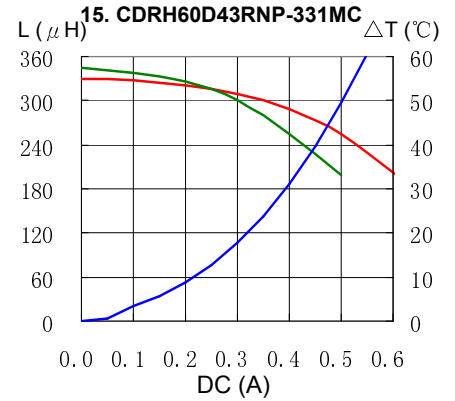
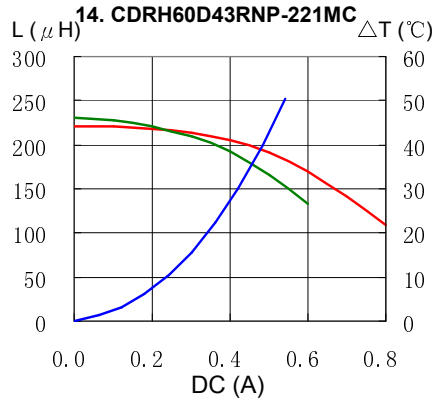
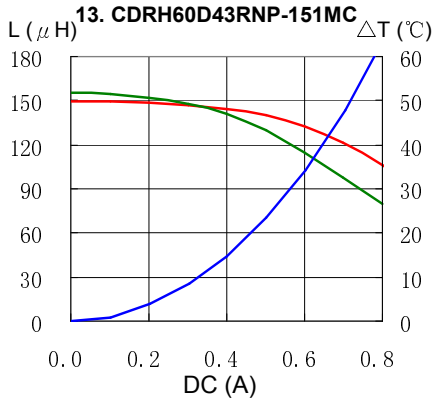


# SMD Power Inductor CDRH60D43R

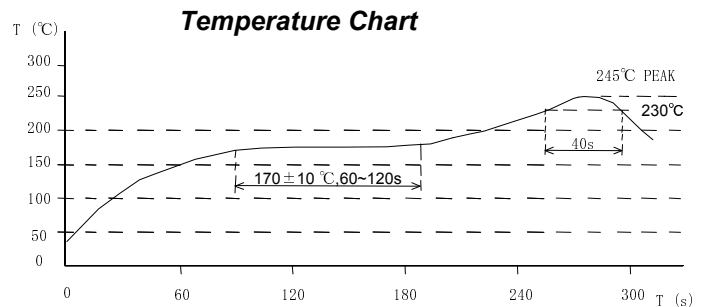
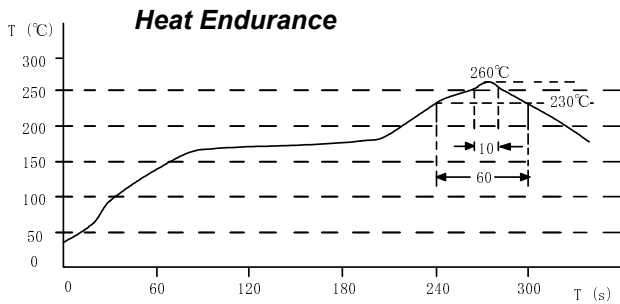


## Saturation Current & Temperature Rise Graph

— L (20°C) — L (105°C) — ΔT



## Solder Reflow Condition



Please refer to the sales offices on our website - <http://www.sumida.com>

**Hong Kong**  
 Tel.+852-2880-6781  
 FAX.+852-2565-9600  
[sales@hk.sumida.com](mailto:sales@hk.sumida.com)  
**Saitama(Japan)**  
 Tel.+81-48-691-7300  
 FAX.+81-48-691-7340  
[sales@jp.sumida.com](mailto:sales@jp.sumida.com)  
**Chicago**  
 Tel.+1-847-545-6700  
 FAX.+1-847-545-6720  
[sales@us.sumida.com](mailto:sales@us.sumida.com)

**Shanghai**  
 Tel.+86-21-5836-3299  
 FAX.+86-21-5836-3266  
[shanghai.sales@cn.sumida.com](mailto:shanghai.sales@cn.sumida.com)  
**Seoul**  
 Tel.+82-2-6237-0777  
 FAX.+82-2-6237-0778  
[sales@kr.sumida.com](mailto:sales@kr.sumida.com)  
**Obernzell**  
 Tel.+49-8591-937-0  
 FAX.+49-8591-937-103  
[contact@eu.sumida.com](mailto:contact@eu.sumida.com)

**Shenzhen**  
 Tel.+86-755-8291-0228  
 FAX.+86-755-8291-0338  
[shenzhen.sales@cn.sumida.com](mailto:shenzhen.sales@cn.sumida.com)  
**Singapore**  
 Tel.+65-6296-3388  
 FAX.+65-6841-4426  
[sales@sg.sumida.com](mailto:sales@sg.sumida.com)  
**Neumarkt**  
 Tel.+49-9181-4509-110  
 FAX.+49-9181-4509-310  
[infocomp@eu.sumida.com](mailto:infocomp@eu.sumida.com)

**Taipei**  
 Tel.+886-2-8751-2737  
 FAX.+886-2-8751-2738  
[sales@tw.sumida.com](mailto:sales@tw.sumida.com)  
**San Jose**  
 Tel.+1-408-321-9660  
 FAX.+1-408-321-9308  
[sales@us.sumida.com](mailto:sales@us.sumida.com)