

Excellent Integrated System Limited

Stocking Distributor

Click to view price, real time Inventory, Delivery & Lifecycle Information:

[Sumida Corporation](#)
[CLS4D09NP-100NC](#)

For any questions, you can email us directly:

sales@integrated-circuit.com

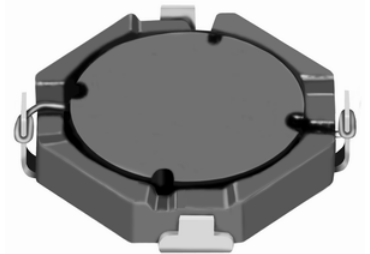


Power Inductor & 2 in 1 Transformer <SMD Type: CLS Series>

Type: CLS4D09

◆ Product Description

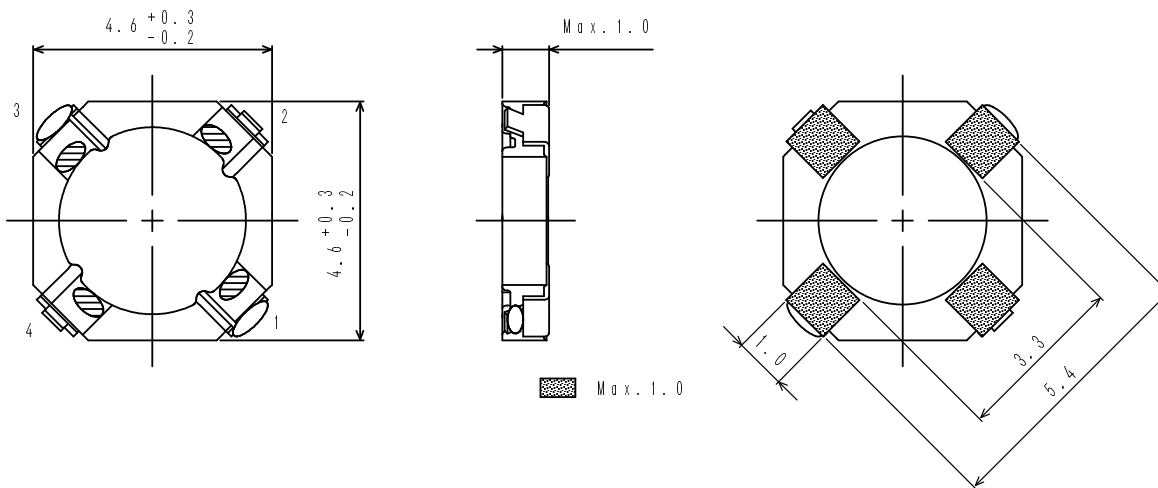
- 4.9 × 4.9mm Max.(L×W), 1.0mm Max. Height.
- 4 Terminal pins' type gives a flexible design as inductors or transformers (SEPIC,ZETA circuit).
- Custom design is available.



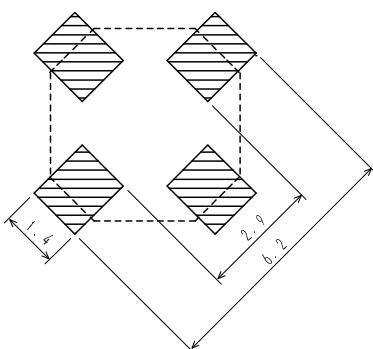
◆ Feature

- Magnetically shielded construction.
- Ideally used in portable devices such as Mobilephone,DSC/DVC,MP3,PDA, etc as DC-DC Converter inductors, specially suitable for White LED drive.
- RoHS Compliant.

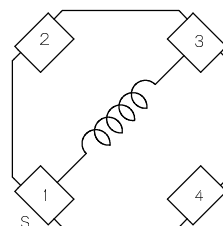
◆ Dimensions (mm)



◆ Land Pattern (mm)



◆ Schematics(Bottom)





Power Inductor & 2 in 1 Transformer <SMD Type: CLS Series>

Type: CLS4D09

◆ **Specification**

| Part Name ※ | Stamp | Inductance (μ H) 100kHz | D.C.R.(m Ω) Max.(Typ.) (at 20°C) | Saturation current (mA) ※1 | Temperature Rise Current (mA) ※2 |
|-----------------|-------|------------------------------------|--|-------------------------------|--|
| CLS4D09NP-4R7N□ | A | 4.7 \pm 30% | 185(150) | 800 | 750 |
| CLS4D09NP-6R8N□ | B | 6.8 \pm 30% | 260(210) | 630 | 630 |
| CLS4D09NP-100N□ | C | 10 \pm 30% | 370(300) | 500 | 500 |
| CLS4D09NP-150N□ | D | 15 \pm 30% | 580(470) | 420 | 370 |
| CLS4D09NP-220N□ | E | 22 \pm 30% | 910(730) | 350 | 300 |

※ **Description of part name**

CLS4D09NP-4R7N□

- B Box
- C Carrier Tape

※1. Saturation current: The DC current at which the inductance decreases to 65% of it's nominal value.

※2. Temperature rise current: The DC current at which the temperature rise is $\Delta t=40^{\circ}\text{C}$. ($T_a=20^{\circ}\text{C}$).