

## **Excellent Integrated System Limited**

Stocking Distributor

Click to view price, real time Inventory, Delivery & Lifecycle Information:

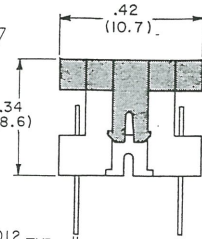
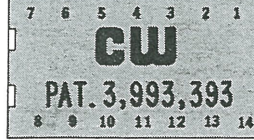
[CW Industries](#)  
[CWR-130-14-0001](#)

For any questions, you can email us directly:

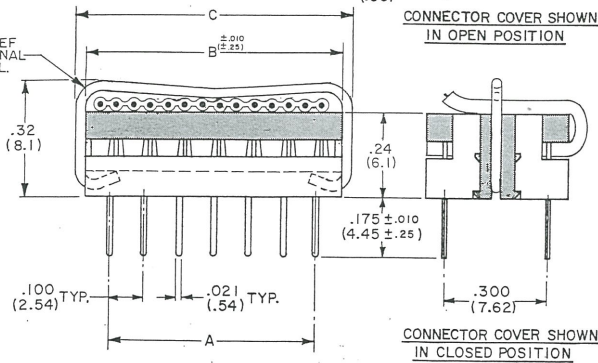
[sales@integrated-circuit.com](mailto:sales@integrated-circuit.com)

**DIP CONNECTOR** (  $\pm .002$  CENTERS )

NOTCHED CORNER ORIENTS No.1 CONTACT LOCATION.  
 (14 CONTACT POSITIONS SHOWN; ALSO AVAILABLE  
 WITH 16 POSITIONS.)



STRAIN RELIEF  
 STRAP OPTIONAL  
 STEEL-TIN PL.



CONNECTOR COVER SHOWN  
 IN OPEN POSITION

CONNECTOR COVER SHOWN  
 IN CLOSED POSITION

CONNECTOR DIMENSIONS			
No. of SOLDER POSTS	A	B	C
14	.60 (15.2)	.754 (19.2)	.81 (20.6)
16	.70 (17.8)	.854 (21.7)	.91 (23.1)

DIMENSIONS IN INCHES (MILLIMETERS)  
 DO NOT SCALE DRAWING ..... Dwg. No. **CWR-130-XX-0000**

- NOTES:**
- Dimensions are in inches; dimensions in ( ) are in millimeters.
  - Metric equivalents are given for general information only and are based upon 1.00 inches = (25.4) millimeters.
  - Unless otherwise specified, tolerances are  $\pm .005$  (.13) for three place decimals and  $\pm .01$  (.3) for two place decimals.

**MATERIALS:**  
 PLASTIC PARTS - UL94V-O Thermoplastic (blue), flame retardant.  
 CONTACTS - Phosphor bronze, std.  
 CONTACT PLATING - .000010 gold over .000050 nickel, std.

**OPERATING STANDARDS:**  
 TEMPERATURE RATING - 125°C.  
 CONTACT RATING - 1 Ampere.  
 DIELECTRIC STRENGTH - Over 500 V.D.C. at sea level.  
 CONDUCTORS ACCEPTED - 28-30 AWG solid or stranded.

**CUSTOMER DRAWING**

FORM-B3	0														
	1														
	REVISIONS														
	RELEASED: LW 3-05-82														
REDRAWN: ADDED CUSTOMER DWG. & NEW FORMAT "B" DOW 3-21-97															
G.C. MAK 25 1997															
<p><b>ATTENTION</b></p> <p>THIS DRAWING AND ITS ATTACHMENTS, IF ANY, ARE PROPRIETARY TO CW INDUSTRIES AND DESCRIBE DESIGNS THAT ARE CONFIDENTIAL AND MUST NOT BE DISCLOSED UNLESS AUTHORIZED, IN WRITING, BY AN OFFICER OF CW INDUSTRIES.</p>															
<p><b>CW INDUSTRIES</b>          Southampton, Pa. 18966</p> <p>TOLERANCES UNLESS OTHERWISE SPECIFIED</p> <table border="0"> <tr> <td>2 Place Decimal <math>\pm .010</math></td> <td>METRIC</td> </tr> <tr> <td>3 Place Decimal <math>\pm .005</math></td> <td>1 Place Dec. <math>\pm .25</math>mm</td> </tr> <tr> <td>Angles ..... <math>\pm 1^\circ</math></td> <td>2 Place Dec. <math>\pm .13</math>mm</td> </tr> </table> <p>Made for: CW IND.          Drawn by: DGW 3-21-97          Checked by: G. GULD 3-24-97          Approval: A. HOSFELD 3-25-97</p>								2 Place Decimal $\pm .010$	METRIC	3 Place Decimal $\pm .005$	1 Place Dec. $\pm .25$ mm	Angles ..... $\pm 1^\circ$	2 Place Dec. $\pm .13$ mm	<p>Title: DIP CONNECTOR          NO. CONTS. PER          CONN. DIM. CHART          W/.175" SOLDER POSTS</p> <p>Division: CONNECTOR</p> <p>Dwg. No. CWR-130-XX-0000</p>	
2 Place Decimal $\pm .010$	METRIC														
3 Place Decimal $\pm .005$	1 Place Dec. $\pm .25$ mm														
Angles ..... $\pm 1^\circ$	2 Place Dec. $\pm .13$ mm														

MASTER