

Excellent Integrated System Limited

Stocking Distributor

Click to view price, real time Inventory, Delivery & Lifecycle Information:

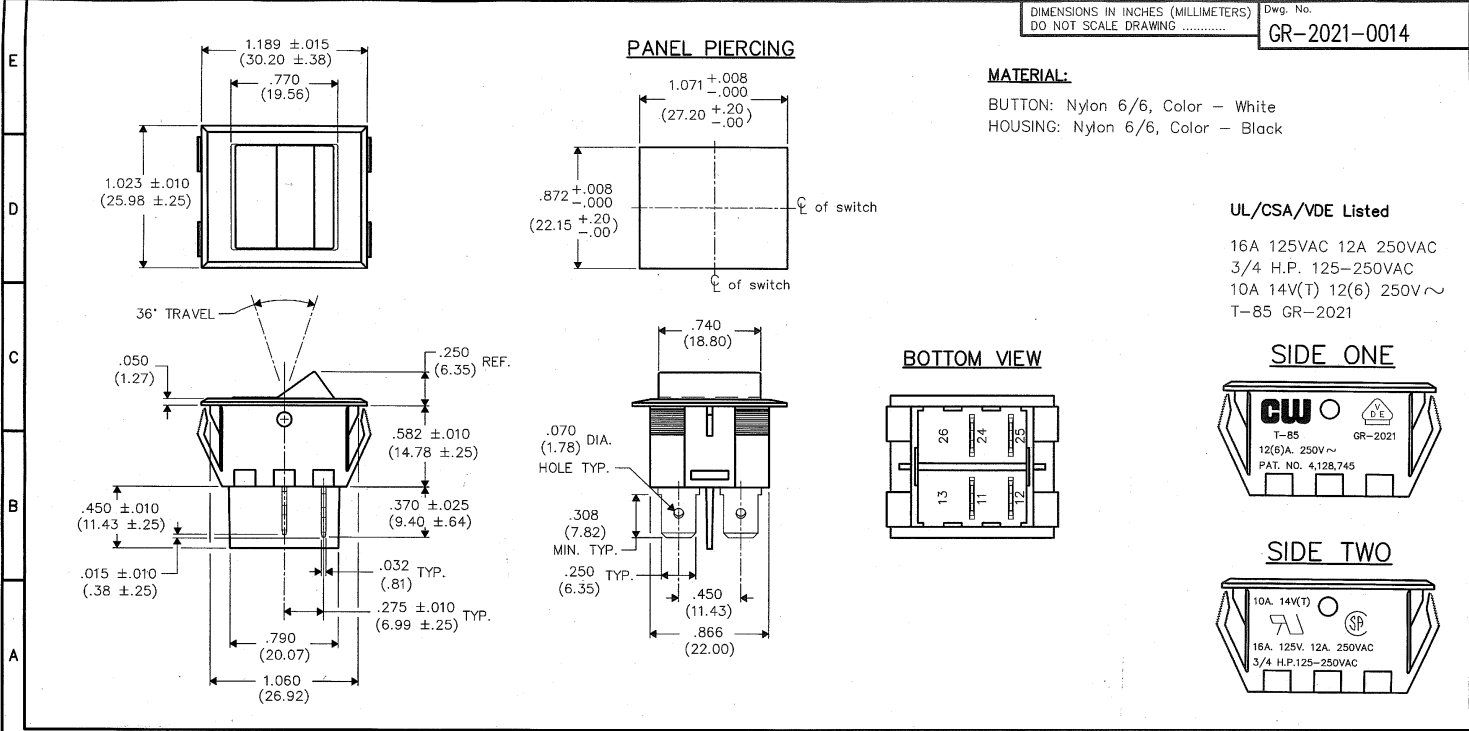
[CW Industries](#)
[GR-2021-0014](#)

For any questions, you can email us directly:
sales@integrated-circuit.com



DIMENSIONS IN INCHES (MILLIMETERS)
 DO NOT SCALE DRAWING

Dwg. No.
GR-2021-0014



1	2	3	4	5	6	7	8	9	10	
REVISIONS NEW RELEASE CGW 12-21-2009 DEC 21 2009 ADDED VIEWS OF SIDE ONE, SIDE TWO & MATERIAL FOR BUTTON & HOUSING TO DRAWING. CGW 12-22-2009 GG DEC 22 2009							CW INDUSTRIES Southampton, Pa. 18966 TOLERANCES UNLESS OTHERWISE SPECIFIED 2 Place Decimal ±.010 METRIC 3 Place Decimal ±.005 1 Place Dec. ±.25mm Angles 31° 2 Place Dec. ±.13mm Made for: CW IND. Drawn by: DGW 12/21/2009 Checked by: G. GULD 12-21-09 Approval: G. GULD 12-21-09		Title: ROCKER SWITCH ASSEMBLY D.P.- S.T. Division: SWITCH Dwg. No. GR-2021-0014	

MASTER