

METAL MALE / FEMALE THREADED STANDOFFS

BTS Series Brass Male/Female Threaded Standoff



BTS Series (Threaded Standoffs) can be used with the following screws and nuts:

Threads: 4-40, 6-32, 8-32

SCREWS:

SPS Series -
Page: 786

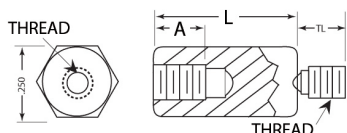
SPX Series -
Page: 786

NUTS:

NLH Series -
Page: 814

NHS Series -
Page: 813

NHS Series -
Page: 813



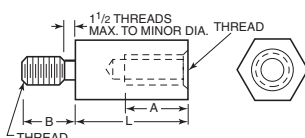
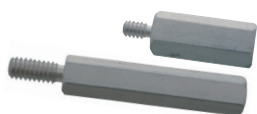
Thread Size	TL External	A Internal
4-40	.187	0.250
6-32	.250	0.375
8-32	.375	0.375

Specifications:

- Material: Brass with Nickel Plating

Item No.	Thread	L In.	Bulk Pack Qty.	Item No.	Thread	L In.	Bulk Pack Qty.
BTS005A	4-40	0.250	500	BTS130A	6-32	0.875	250
BTS010A	4-40	0.375	500	BTS135A	6-32	1.000	250
BTS015A	4-40	0.500	500	BTS140A	6-32	1.250	100
BTS020A	4-40	0.625	500	BTS145A	6-32	1.500	100
BTS025A	4-40	0.750	500	BTS205A	8-32	0.250	500
BTS030A	4-40	0.875	250	BTS210A	8-32	0.375	500
BTS035A	4-40	1.000	250	BTS215A	8-32	0.500	500
BTS040A	4-40	1.250	100	BTS220A	8-32	0.625	500
BTS045A	4-40	1.500	100	BTS225A	8-32	0.750	500
BTS105A	6-32	0.250	500	BTS230A	8-32	0.875	250
BTS110A	6-32	0.375	500	BTS235A	8-32	1.000	250
BTS115A	6-32	0.500	500	BTS240A	8-32	1.250	100
BTS120A	6-32	0.625	500	BTS245A	8-32	1.500	100
BTS125A	6-32	0.750	500				

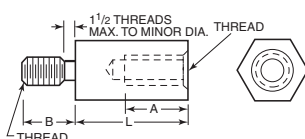
1/4" Hex Male/Female Threaded Standoffs Aluminum - Brass - Stainless Steel



Aluminum is plain finished. Brass is clear chromate zinc plated.

Aluminum	Brass	Stainless	Item No.	Thread	A	B	L	Pack Qty.
—	—	—	RAF-602	4-40	.137	3/16	1/4	1
—	—	—	RAF-604	4-40	1/4	3/16	3/8	1
—	—	—	RAF-606	4-40	1/4	3/16	1/2	1
—	—	—	RAF-608	4-40	1/4	3/16	5/8	1
—	—	—	RAF-614	4-40	1/4	3/16	1	1
—	—	—	RAF-616	4-40	1/4	3/16	1 1/4	1
—	—	—	RAF-620	6-32	1/4	1/4	3/8	1
—	—	—	RAF-622	6-32	3/8	1/4	1/2	1
—	—	—	RAF-624	6-32	3/8	1/4	5/8	1
—	—	—	RAF-626	6-32	3/8	1/4	3/4	1
—	—	—	RAF-628	6-32	3/8	1/4	7/8	1
—	—	—	RAF-630	6-32	3/8	1/4	1	1
—	—	—	RAF-638	8-32	3/8	3/8	1/2	1
—	—	—	RAF-742	8-32	7/16	3/8	3/4	1
—	—	—	RAF-646	8-32	7/16	3/8	1	1
—	—	—	RAF-648	8-32	7/16	3/8	1 1/4	1

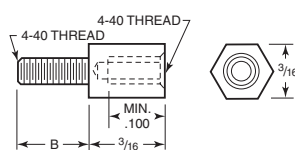
Spacers & Standoffs 6mm Hex Male/Female Threaded Standoffs



Made from brass, clear chromate zinc plated. Dimensions are in millimeters.

Item No.	Thread	A	B	L	Pack Qty.	Item No.	Thread	A	B	L	Pack Qty.
RAF-1158	M3 x .5	2.8	4.76	6	1	RAF-1176	M3.5 x .6	6.5	6.35	10	1
RAF-1160	M3 x .5	6.4	4.76	10	1	RAF-1182	M3.5 x .6	9.5	6.35	19	1
RAF-1162	M3 x .5	6.4	4.76	13	1	RAF-1190	M4 x .7	4.0	9.53	6	1
RAF-1164	M3 x .5	6.4	4.76	16	1	RAF-1194	M4 x .7	9.0	9.53	13	1
RAF-1166	M3 x .5	6.4	4.76	19	1	RAF-1196	M4 x .7	11.1	9.53	16	1
RAF-1172	M3 x .5	6.4	4.76	31	1	RAF-1202	M4 x .7	11.1	9.53	25	1

Spacers & Standoffs 3/16" Hex Jack Screws



Made of steel with yellow chromate zinc finish. Each jack screw comes with two #4 flat washers, one #4 lock washer and one #4-40 hex nut.

Item No.	B	Pack Qty.	Item No.	B	Pack Qty.
RAF-901	3/16	1	RAF-906	.500	1
RAF-902	.250	1	RAF-907	.563	1
RAF-903	5/16	1	RAF-908	.625	1
RAF-904	.375	1	RAF-909	.688	1
RAF-905	7/16	1	RAF-910	3/4	1