



Distributor of NorComp : Excellent Integrated System Limited

Datasheet of 195-015-113-001 - D-Sub Connector Plug, Male Pins 15 Position Through Hole Solder

Contact us: sales@integrated-circuit.com Website: www.integrated-circuit.com

Excellent Integrated System Limited

Stocking Distributor

Click to view price, real time Inventory, Delivery & Lifecycle Information:

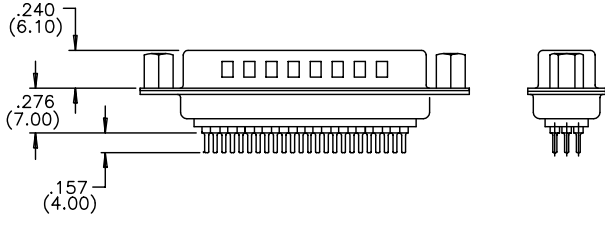
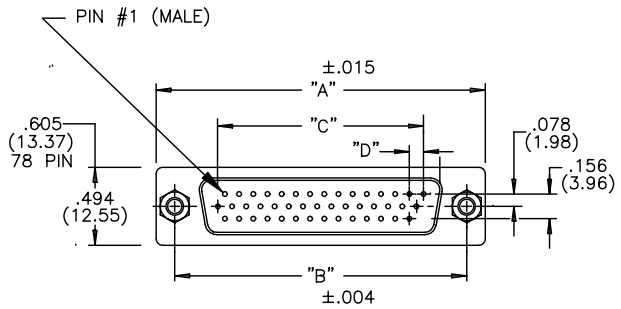
[NorComp](#)

[195-015-113-001](#)

For any questions, you can email us directly:

sales@integrated-circuit.com

DESCRIPTION: HIGH DENSITY VERTICAL LOW PROFILE/STAMPED



195-XXX-X13-XX1

SERIES _____
 NUMBER OF CONTACTS _____
 GENDER _____
 1 = MALE
 2 = FEMALE (NO GROUND INDENTS)
 PC MOUNT _____
 NICKEL SHELL _____
 HARDWARE OPTIONS: _____
 00 = .120 MOUNTING HOLE
 55 = 4-40 INSERTS
 03 = 4-40 HEX STANDOFFS
 PLATING: _____
 1 = GOLD FLASH

MATERIALS:

INSULATOR: THERMOPLASTIC POLYESTER, UL94V-0
 CHEMICAL RESISTANCE, COLOR BLACK

SHELL: STEEL, NICKEL PLATED

CONTACT: MALE:BRASS; FEMALE: PHOSPHOR BRONZE
 GOLD FLASH IN MATING AREA
 TIN-LEAD PLATING ON TAIL ENDS

ELECTRICAL:

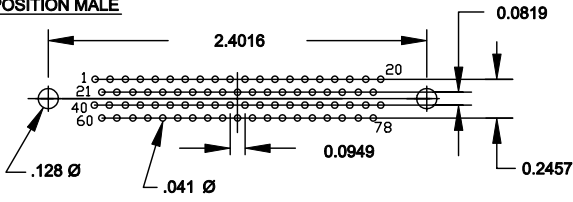
CURRENT RATING: 2 AMPERES
 DIELECTRIC WITHSTANDING VOLTAGE:
 1000VAC rms AT SEA LEVEL
 INSULATION RESISTANCE: 5000 MEGOHMS MIN.
 CONTACT RESISTANCE: 10 MILLIOHMS MAX.
 WORKING TEMPERATURE: -55° TO +125° C

NUMBER OF CONTACTS	"A"		"B"		"C"		"D"	
	Inch	(mm)	Inch	(mm)	Inch	(mm)	Inch	(mm)
15	1.214	(30.84)	.984	(24.99)	.405	(10.29)	.090	(2.29)
26	1.545	(39.24)	1.312	(33.32)	.765	(19.43)	.090	(2.29)
44	2.088	(53.04)	1.852	(47.04)	1.305	(33.15)	.090	(2.29)
62	2.730	(69.34)	2.500	(63.50)	1.948	(49.47)	.095	(2.41)
78	2.635	(66.93)	2.406	(61.11)	1.805	(45.85)	.095	(2.41)

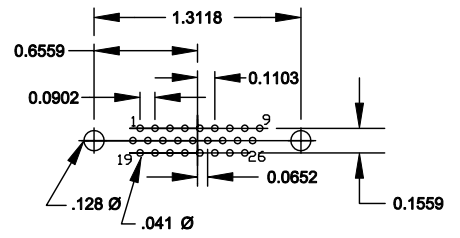
	THESE DRAWINGS AND SPECIFICATIONS ARE THE PROPERTY OF NorComp AND SHALL NOT BE REPRODUCED, COPIED OR USED AS THE BASIS FOR THE MANUFACTURE OF SALE OF APPARATUS WITHOUT WRITTEN PERMISSION.		DRAWN: PAM JENKINS	DATE: 5-10-01
	<h1>NorComp</h1>		CHECKED:	DATE:
SCALE:			SHEET 1 OF 1	REV 2
		DWG NO. 195-XXX-113-XX1		

DESCRIPTION: HIGH DENSITY DIP SOLDER MALE FOOTPRINT

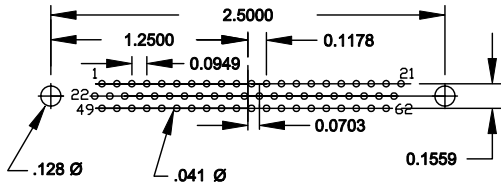
78 POSITION MALE



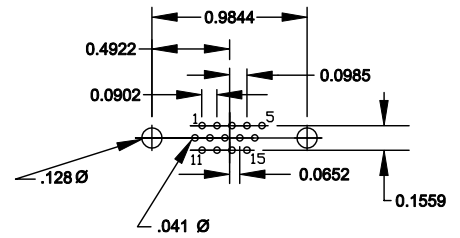
26 POSITION MALE



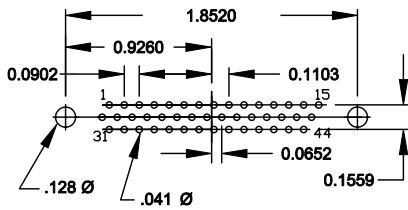
62 POSITION MALE




15 POSITION MALE



44 POSITION MALE



	THESE DRAWINGS AND SPECIFICATIONS ARE THE PROPERTY OF NorComp AND SHALL NOT BE REPRODUCED, COPIED OR USED AS THE BASIS FOR THE MANUFACTURE OF SALE OF APPARATUS WITHOUT WRITTEN PERMISSION.		DRAWN: PAM JENKINS	DATE: 10-29-01
			CHECKED:	DATE:
<h1>NorComp</h1>	SCALE:	SHEET 1 OF 1	REV 2	
	DWG NO. HIGH DENSITY VERTICAL MALE FOOTPRINT			