



Excellent Integrated System Limited

Stocking Distributor

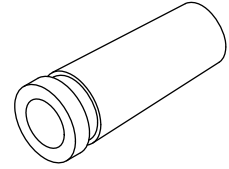
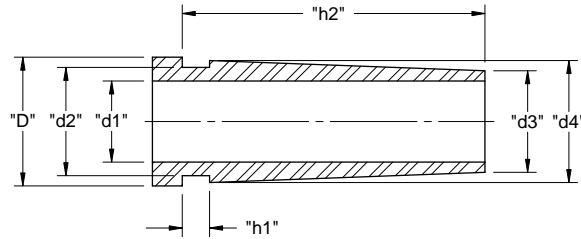
Click to view price, real time Inventory, Delivery & Lifecycle Information:

[Essentra Components \(formerly Richco, Inc.\)](#)
[RGS2-12462](#)

For any questions, you can email us directly:
sales@integrated-circuit.com

PART NO.	"d2"	"h1"	"d1" NOMINAL DIA.	"h2"	"D"	"d3"	"d4"
RGS2-12462	.500 (12.7)	.126 (3.2)	.374 (9.5)	1.398 (35.5)	.594 (15.1)	.469 (11.9)	.563 (14.3)
RGS2-51409		.031 (0.8)	.344 (8.7)	1.055 (26.8)	.752 (19.1)	.480 (12.2)	.594 (15.1)

AVAILABLE BY SPECIAL ORDER



NOTES:
1. MATERIAL: PVC (RMS-25)
2. COLOR: BLACK

REV.		DESCRIPTION	ENGR.	DATE	TITLE: RICHCO GROMMET SLEEVE - TYPE 2		DWG IN IN [MM]		FINAL		PRINT TYPE
D		SEE CO 200604 FOR CHANGES	SK	12/01/10	FILE #:	RGS2	DWN:	S.J.	APP:		
C		SEE ECN #1148 FOR CHANGES	SJ	03.29.06	SHEET:	1 OF 1	SHEET SIZE:	A	DT:	07.15.02	CHKD:
B		SEE ECN #606 FOR CHANGES	SM	03.31.03	RE:	RICHCO, INC.	RICHCO, INC.		ENG@RICHCO-INC.COM		SEE TABLE
A		SEE ECN #541 FOR CHANGES	SM	12.12.02			(773) 539-4060				
					CREATED USING SOLIDWORKS					CA	
					TOLERANCES UNLESS NOTED XX=±.020 XXX=±.015 FRAC=±1/32 ANG=±1°						