



Distributor of NorComp : Excellent Integrated System Limited

Datasheet of 68021WA4S401 - D-Sub Connector Receptacle, Female Sockets 21 (17 + 4 Power) Position Free Hanging (In-Line) Solder Cup

Contact us: sales@integrated-circuit.com Website: www.integrated-circuit.com

Excellent Integrated System Limited

Stocking Distributor

Click to view price, real time Inventory, Delivery & Lifecycle Information:

[NorComp](#)
[68021WA4S401](#)

For any questions, you can email us directly:

sales@integrated-circuit.com

DESCRIPTION: 21WAS Female Connector -40 Amp Contact

Specification:

Shell: Steel, Tin Plated

Insulator: PBT +30% Fibre-Glass,
Black, UL 94V-0

Contacts: Brass - Gold Flash over Nickel

Current Rating: Signal - 5 Amps

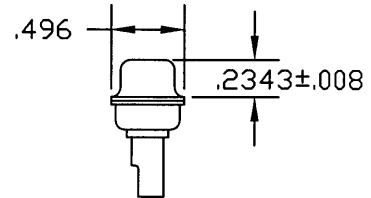
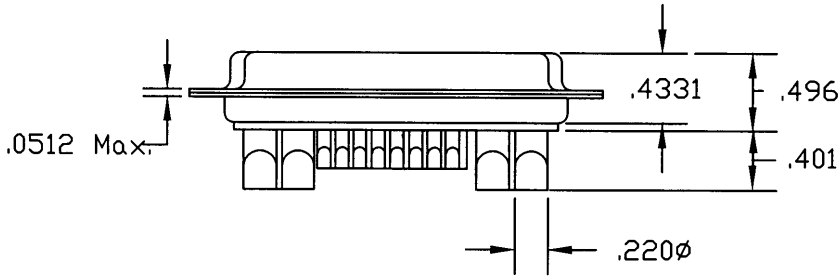
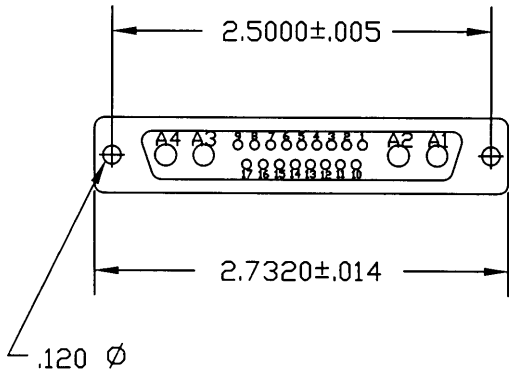
Current Rating: Power - 40 Amps

Contact Resistance: 15mΩHMS MAX.

Insulator Resistance: 1000 MΩHMS MIN.

Voltage: 500V AC for 1 minute

Temperature: -50°C to +100°C



| | | | |
|------------------|---|-----------------------|------------------|
| | THESE DRAWINGS AND SPECIFICATIONS ARE THE PROPERTY OF NorComp AND SHALL NOT BE REPRODUCED, COPIED OR USED AS THE BASIS FOR THE MANUFACTURE OF SALE OF APPARATUS WITHOUT WRITTEN PERMISSION. | DRAWN: PAM JENKINS | DATE: 4-11-01 |
| | | CHECKED: | DATE: |
| <h1>NorComp</h1> | SCALE: | SHEET 1 OF 1 | REV 1 |
| | DWG NO. 680-21WAS-401 | | |