

Excellent Integrated System Limited

Stocking Distributor

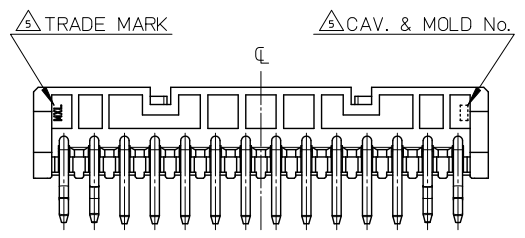
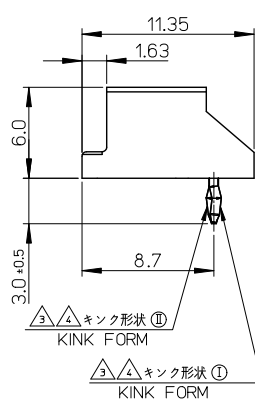
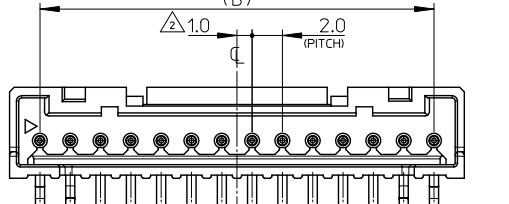
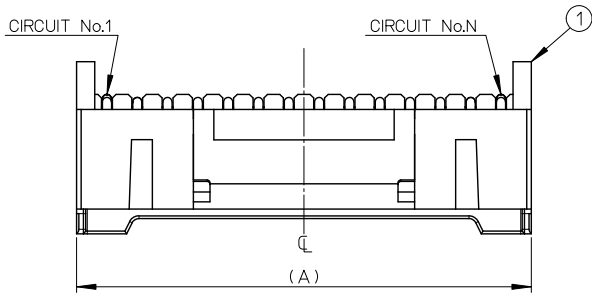
Click to view price, real time Inventory, Delivery & Lifecycle Information:

[Molex Connector Corporation](#)
[5036600410](#)

For any questions, you can email us directly:

sales@integrated-circuit.com

10 9 8 7 6 5 4 3 2 1

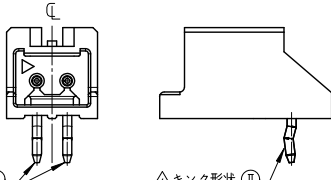
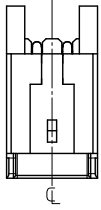


① キンク形状 KINK FORM
② キンク形状 KINK FORM
③ キンク形状 KINK FORM
④ キンク形状 KINK FORM
⑤ キンク形状 KINK FORM
⑥ キンク形状 KINK FORM
⑦ キンク形状 KINK FORM
⑧ キンク形状 KINK FORM
⑨ キンク形状 KINK FORM
⑩ キンク形状 KINK FORM
⑪ キンク形状 KINK FORM
⑫ キンク形状 KINK FORM
⑬ キンク形状 KINK FORM
⑭ キンク形状 KINK FORM
⑮ キンク形状 KINK FORM
⑯ キンク形状 KINK FORM
⑰ キンク形状 KINK FORM
⑱ キンク形状 KINK FORM
⑲ キンク形状 KINK FORM
⑳ キンク形状 KINK FORM
㉑ キンク形状 KINK FORM
㉒ キンク形状 KINK FORM
㉓ キンク形状 KINK FORM
㉔ キンク形状 KINK FORM
㉕ キンク形状 KINK FORM
㉖ キンク形状 KINK FORM
㉗ キンク形状 KINK FORM
㉘ キンク形状 KINK FORM
㉙ キンク形状 KINK FORM
㉚ キンク形状 KINK FORM
㉛ キンク形状 KINK FORM
㉜ キンク形状 KINK FORM
㉝ キンク形状 KINK FORM
㉞ キンク形状 KINK FORM
㉟ キンク形状 KINK FORM
㊱ キンク形状 KINK FORM
㊲ キンク形状 KINK FORM
㊳ キンク形状 KINK FORM
㊴ キンク形状 KINK FORM
㊵ キンク形状 KINK FORM
㊶ キンク形状 KINK FORM
㊷ キンク形状 KINK FORM
㊸ キンク形状 KINK FORM
㊹ キンク形状 KINK FORM
㊺ キンク形状 KINK FORM
㊻ キンク形状 KINK FORM
㊼ キンク形状 KINK FORM
㊽ キンク形状 KINK FORM
㊾ キンク形状 KINK FORM
㊿ キンク形状 KINK FORM

28	32	503660	-1510	15	503660-**10 ボス無(WITHOUT BOSS)
26	30		-1410	14	
22	26		-1210	12	
18	22		-1010	10	
14	18		-0810	8	
10	14		-0610	6	
8	12		-0510	5	
6	10	503660	-0410	4	
B	A	TRAY PACKAGE	CIRCUIT	CONNECTOR SERIES No.	
		ORDER NO.			

No.	部品 PART	材質 MATERIAL	REVISED EC NO. J2012-0117 DRAWN:SSATO02 2011/07/25 CHKD:KASAKAWA 2011/07/25 APPR:NUKITA 2011/07/29 DESCRIPTION	GENERAL TOLERANCES (UNLESS SPECIFIED)	DIMENSION STYLE MM ONLY	SCALE 4:1	DESIGN UNITS METRIC	THIRD ANGLE PROJECTION
①	ハウジング HOUSING	ポリエステル(PBT), ガラス充填, UL94V-0 POLYESTER, GLASS FILLED, UL94V-0 色: ナチュラル(白)		10 UNDER ±0.2 10 OVER 30 UNDER ±0.25 30 OVER ±0.3 ANGULAR ±1° DRAFT WHERE APPLICABLE MUST REMAIN WITHIN DIMENSIONS	DRAWN BY SSATO02 DATE 2010/08/06 CHECKED BY KASAKAWA DATE 2010/08/16 APPROVED BY NUKITA DATE 2010/08/16	TITLE 2.0 W/B CONN. SINGLE DIP R/A PLUG HSG ASS'Y WITHOUT BOSS	MATERIAL NO. SEE CHART DOCUMENT NO. SD-503660-001	SHEET NO. 1 OF 3
②	ピン PIN	黄銅, 錫めっき BRASS, Sn PLATED		THIS DRAWING CONTAINS INFORMATION THAT IS PROPRIETARY TO MOLEX INCORPORATED AND SHOULD NOT BE USED WITHOUT WRITTEN PERMISSION				

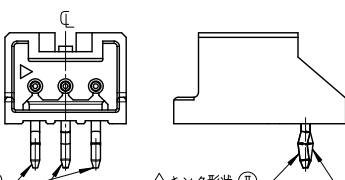
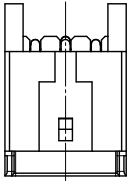
10 9 8 7 6 5 4 3 2 1



△キック形状 ①
KINK FORM

△キック形状 ①
KINK FORM

FIGURE OF 2 CIRCUIT
SCALE 4:1



△キック形状 ②
KINK FORM

△キック形状 ②
KINK FORM

△キック形状 ①
KINK FORM

△キック形状 ①
KINK FORM

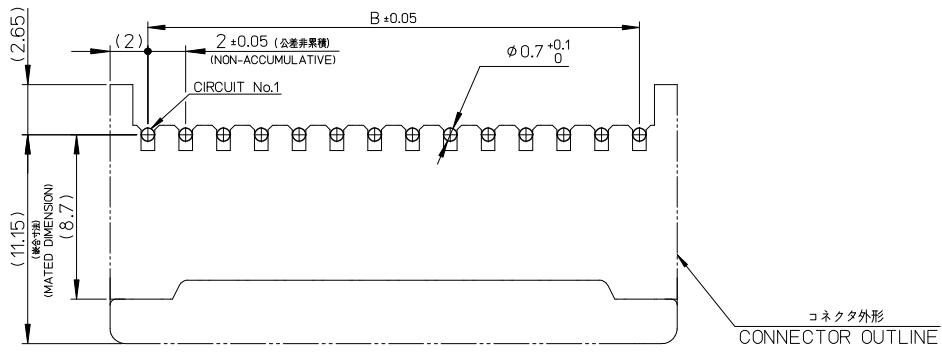
FIGURE OF 3 CIRCUIT
SCALE 4:1

NOTES:

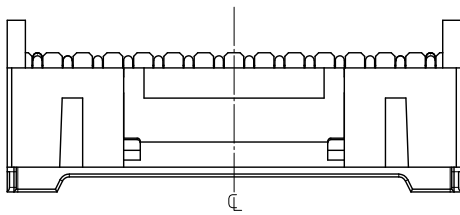
- 適合相手:503658 シリーズ
MATE WITH :503658 SERIES.
- 偶数極に適用。
APPLY FOR EVEN CIRCUIT.
- キックは両端2ピンに付加。
KINK ATTACHED TO THE POSITION OF 2PINS TO BOTH OUTSIDE ENDS.
- 2極以外のキック形状は両サイドが①、それ以外のキック形状は全て② 形状とする。
3極のキック形状は両サイドに①、2ピン目に② 形状を付加する。
MORE THAN 2 CIRCUIT : PINS AT BOTH ENDS ARE KINK FORMED TO ①
THE OTHER PINS ARE KINK FORMED TO ②
3 CIRCUIT : PINS AT BOTH ENDS ARE KINK FORMED TO ①
THE OTHER PINS ARE KINK FORMED TO ②
- トレードマーク:MXLにて表示。
キャビティ番号:1桁から2桁の数字にて表示。 金型番号:アルファベット1文字にて表示。
TRADE MARK IS FORMED BY MXL.
AND BY 1 - 2 DIGIT NUMBER (TO CAVITY No.)
AND BY 1 LETTER OF ALPHABET (TO MOLD No.)
- 本製品のプラスチック部に黒点等が確認される場合や、色合いが異なる場合がございます。製品性能に影響はございません。
THERE IS NO INFLUENCE IN THE PRODUCT PERFORMANCE THROUGH THE BLACK SPOT ETC.
MIGHT BE CONFIRMED TO THE PLASTIC PART OF THIS PRODUCT AND
THE SHADE MIGHT BE DIFFERENT.
- 製品の取り扱いについては、コネクタ取扱説明書(AS-503658-001)を参照願います。
PLEASE REFER TO INSTRUCTION MANUAL(AS-503658-001)
- ELV及びRoHS適合品
ELV AND RoHS COMPLIANT

REVISED IEC NO. J2012-0117 DRAWN:SSAT002 CHIKIDAKAKAWA APPROX:NUKITA 2011/07/25 2011/07/25 2011/07/29 DESCRIPTION REV	GENERAL TOLERANCES (UNLESS SPECIFIED)		DIMENSION STYLE MM ONLY		SCALE 4:1	DESIGN UNITS METRIC	THIRD ANGLE PROJECTION
	10 UNDER	± 0.2	DRAWN BY SSAT002	DATE 2010/08/06	TITLE 2.0 W/B CONN. SINGLE DIP R/A PLUG HSG ASS'Y WITHOUT BOSS		
	10 OVER 30 UNDER	± 0.25	CHECKED BY KASAKAWA	DATE 2010/08/16	MOLEX INCORPORATED		
	30 OVER	± 0.3	APPROVED BY NUKITA	DATE 2010/08/16	DOCUMENT NO. SD-503660-001		
ANGULAR ±1 °		MATERIAL NO. SEE SHEET1		SHEET NO. 2 OF 3		INCORPORATED AND SHOULD NOT BE USED WITHOUT WRITTEN PERMISSION	
DRAFT WHERE APPLICABLE MUST REMAIN WITHIN DIMENSIONS		THIS DRAWING CONTAINS INFORMATION THAT IS PROPRIETARY TO MOLEX					

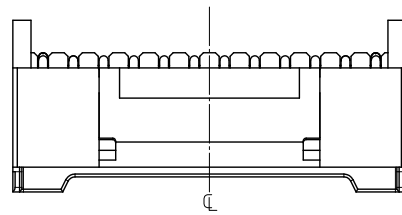
10 9 8 7 6 5 4 3 2 1



基板取付穴推奨寸法 (マウント面)
RECOMMENDED P.C. BOARD
HOLE DIMENSION
(MOUNTING SIDE)
($\pm 1.2-1.6$)



ロック面 14,15極形状
LOCK SIDE SHAPE OF 14,15CKT.



ロック面 4,5,6,8,10,12極形状
LOCK SIDE SHAPE OF 4,5,6,8,10,12CKT.

PROPOSED EC NO: J2012-0117 DRWN: SSAT002 CHKD: KASAKAWA APPR: NUKITA	2011/07/25 2011/07/25 2011/07/29		GENERAL TOLERANCES (UNLESS SPECIFIED)		DIMENSION STYLE MM ONLY		SCALE 4:1	DESIGN UNITS METRIC	THIRD ANGLE PROJECTION
	10 UNDER	± 0.2	10 OVER	30 UNDER	± 0.25	DRAWN BY SSAT002	DATE 2010/08/06	TITLE 2.0 W/B CONN. SINGLE DIP R/A PLUG HSG ASS'Y WITHOUT BOSS	
	30 OVER	± 0.3	ANGULAR ± 1 °		CHECKED BY KASAKAWA	DATE 2010/08/16	MOLEX INCORPORATED		
	DRAFT WHERE APPLICABLE MUST REMAIN WITHIN DIMENSIONS				MATERIAL NO. SEE SHEET 1	DATE 2010/08/16	DOCUMENT NO. SD-503660-001	SHEET NO. 3 OF 3	