

Excellent Integrated System Limited

Stocking Distributor

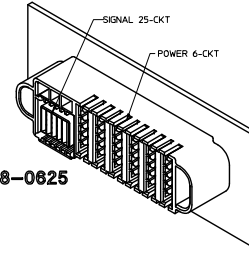
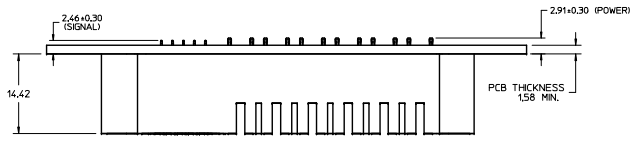
Click to view price, real time Inventory, Delivery & Lifecycle Information:

[Molex Connector Corporation](#)
[1710980425](#)

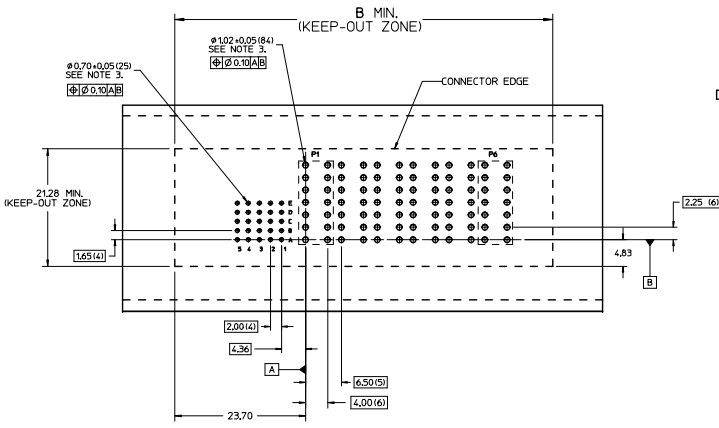
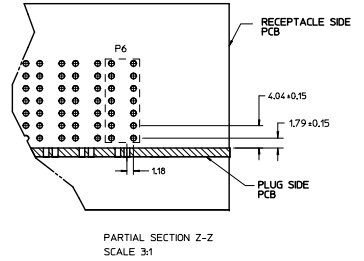
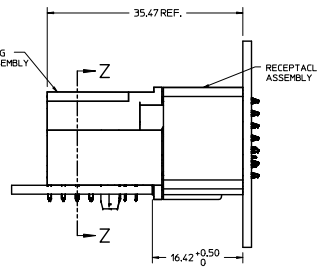
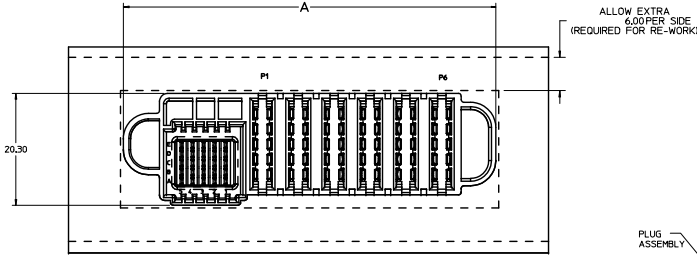
For any questions, you can email us directly:

sales@integrated-circuit.com

PART NUMBER	CKT	DIM 'A'	DIM 'B'
171098-0625	25 SIGNAL - 6 POWER	67.50	68.50
171098-0425	25 SIGNAL - 4 POWER	54.50	55.50
171098-0225	25 SIGNAL - 2 POWER	41.50	42.50



P/N: 171098-0625 SHOWN



RECOMMENDED PCB LAYOUT AND KEEP-OUT ZONE

NOTES:

- MATERIAL:
 - HOUSINGS: LCP UL94 V-0, COLOR: BLACK.
 - TERMINALS: HIGH CONDUCTIVITY COPPER ALLOY.
 - (A) -PLATING: 127 MICROMETER NICKEL OVERALL WITH 254 MICROMETER SELECTIVE TIN ON TAILS AND 0.762 MICROMETER SELECTIVE GOLD ON CONTACT AREA.
- PACKAGING ASSEMBLIES TO BE TRAY PACKED PER PK-171098-0100.
- PC BOARD REQUIRES THRU HOLES. REFER TO PS-171097-100 FOR DETAILS.
- PRODUCT SPEC: PS-171097-100.
- APPLICATION SPEC: AS-171097-100.
- SEE PRODUCT SPEC FOR ROHS REQUIREMENTS.
- ASSEMBLY MATES WITH MOLEX PLUG ASSEMBLY, P/N 171097-XXXX.

REVISIONS	QUALITY SYMBOLS	GENERAL TOLERANCES (UNLESS SPECIFIED)		DIMENSION STYLE		SCALE	DESIGN UNITS	THIRD ANGLE PROJECTION
		mm	INCH	MM ONLY	METRIC			
REVISED NOTES EC NO. UCP2003-2009 DRAWN: SCUMER 2012/11/27 CHKD: [blank] APPROVATEL: [blank] REV: [blank]		4 PLACES	± 0.25	± 0.010	DRAWN BY MKARADIMAS	DATE 2011/06/06		
		3 PLACES	± 0.25	± 0.010	CHECKED BY E. KINSLEY	DATE 2012/01/30		
		1 PLACE	± 0.25	± 0.010	APPROVED BY APATEL	DATE 2012/03/15		
		ANGULAR ±1/2°			MATERIAL NO. SEE CHART	DOCUMENT NO. SD-171098-0100		SHEET NO. 1 OF 1
		DRAFT WHERE APPLICABLE MUST REMAIN WITHIN DIMENSIONS						
		THIS DRAWING CONTAINS INFORMATION THAT IS PROPRIETARY TO MOLEX INCORPORATED AND SHOULD NOT BE USED WITHOUT WRITTEN PERMISSION						