

Excellent Integrated System Limited

Stocking Distributor

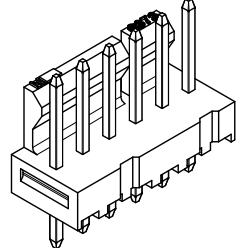
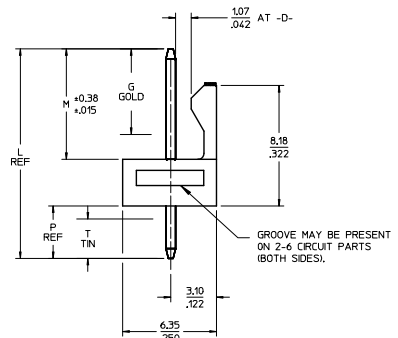
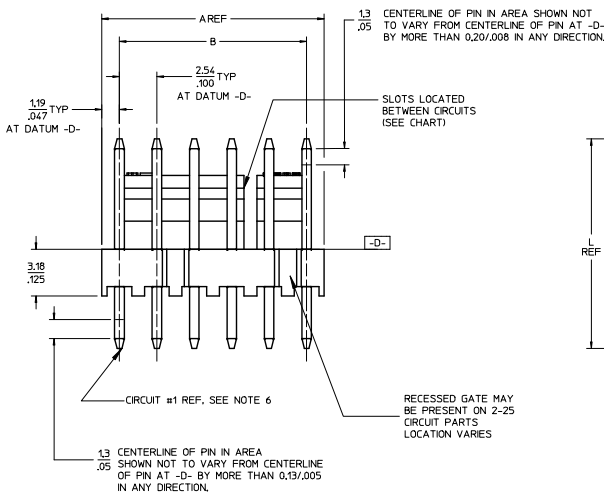
Click to view price, real time Inventory, Delivery & Lifecycle Information:

[Molex Connector Corporation](#)
[0026013192](#)

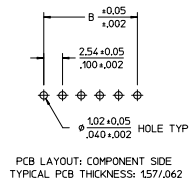
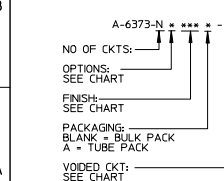
For any questions, you can email us directly:

sales@integrated-circuit.com

CKT	A	B	SLOTS LOCATION
02	4.93	2.54±0.05	NONE
03	2.42	5.08±0.10	NONE
04	10.01	7.62±0.13	NONE
05	12.55	10.16±0.13	NONE
06	15.09	12.70±0.13	4, 5
07	17.63	15.24±0.13	4, 5
08	20.17	17.78±0.15	4, 5
09	22.71	20.32±0.15	4, 5
10	25.25	22.86±0.15	4, 5
11	27.79	25.40±0.18	4, 5
12	30.33	27.94±0.18	4, 5
13	32.87	30.48±0.18	4, 5
14	35.41	33.02±0.18	4, 5
15	37.95	35.56±0.21	4, 5
16	40.49	38.10±0.20	4, 5
17	43.03	40.64±0.20	4, 5
18	45.57	43.18±0.20	4, 5
19	48.11	45.72±0.23	4, 5
20	50.65	48.26±0.23	4, 5
21	53.19	50.80±0.23	4, 5
22	55.73	53.34±0.23	4, 5
23	58.27	55.88±0.23	4, 5
24	60.81	58.42±0.26	4, 5
25	63.35	60.96±0.25	4, 5
26	65.89	63.50±0.25	4, 5
27	68.43	66.04±0.25	4, 5
28	70.97	68.58±0.25	4, 5



- NOTES:
- MATERIAL: NYLON, UL 94V-0, COLOR - WHITE.
 - FINISH:
 - (197) = OVERALL REFLOWED MATTE TIN: 0.00152/0.00060 MIN OVER 0.00127/0.00050 MIN NICKEL.
 - (154) = OVERALL TIN: 0.00254/0.00100 MIN OVER 0.00127/0.00050 MIN NICKEL.
 - (225) = OVERALL MATTE TIN: 0.00254/0.00100 MIN OVER 0.00127/0.00050 MIN NICKEL.
 - (228) = SELECT GOLD: 0.00005/0.00002 MIN, SELECT MATTE TIN: 0.00254/0.00100, BOTH OVER 0.00127/0.00050 MIN NICKEL.
 - (239) = SELECT GOLD: 0.00127/0.00050 MIN, SELECT MATTE TIN: 0.00254/0.00100, BOTH OVER 0.00127/0.00050 MIN NICKEL.
 - (241) = SELECT GOLD: 0.00051/0.00020 MIN, SELECT MATTE TIN: 0.00254/0.00100, BOTH OVER 0.00127/0.00050 MIN NICKEL.
 - PRODUCT SPECIFICATION AND PROCESS PARAMETERS: PS-10-07.
 - PACKAGING INFORMATION: SEE LEGEND.
 - PARTS ARE STACKABLE END TO END ON 2.54/.100 CENTERS.
 - CIRCUIT ONE DESIGNATION IS USED TO DEFINE VOID LOCATION, CIRCUIT ONE MAY OR MAY NOT LINE UP WITH CIRCUIT ONE ON THE MATING HOUSING.
 - PIN PUSHOUT FORCE: 2 LBS MIN.
 - FOR PIN DIMENSIONS, SEE APPLICABLE DRAWING.
 - THIS PART CONFORMS TO CLASS B REQUIREMENTS OF COSMETIC SPECIFICATION PS-45499-002.



2-*	BDS
1	BDS
SHT	REV

ADD	46999-0801
ECC NO:	UICP/2016-4061
DRW/KW/PPR	2016/04/15
CHKD/BELL	2016/04/15
APPR/FSMITH	2016/05/12
DESCRIPTION	
REV	

QUALITY SYMBOLS	GENERAL TOLERANCES (UNLESS SPECIFIED)		DIMENSIONAL STYLE		SCALE	DESIGN UNITS	THIRD ANGLE PROJECTION
	mm	INCH	MM/IN	DATE			
▽=0	4 PLACES ±	±	SAMIEC	2004/03/31	4:1	INCH	KK 100 HEADER ASSEMBLY FRICTION LOCK SOLID BODY
▽=0	3 PLACES ±	±.010	CHECKED BY	DATE			
▽=0	2 PLACES ±	±0.25 ±.015	SAMIEC	2004/03/31	MATERIAL NO.	DOCUMENT NO.	SHEET NO.
▽=0	1 PLACE ±	±0.38 ±	APPROVED BY	DATE			
	0 PLACE ±	±	FSMITH	2010/12/03	SEE CHART	SD-6373-001	1 OF *
	ANGULAR ±1/2°		MATERIAL NO.		DOCUMENT NO.		SHEET NO.
	DRAFT WHERE APPLICABLE MUST REMAIN WITHIN DIMENSIONS		SEE CHART		SD-6373-001		1 OF *
	THIS DRAWING CONTAINS INFORMATION THAT IS PROPRIETARY TO MOLEX INCORPORATED AND SHOULD NOT BE USED WITHOUT WRITTEN PERMISSION						