

Excellent Integrated System Limited

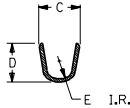
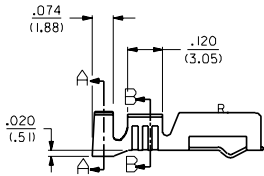
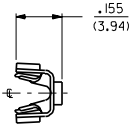
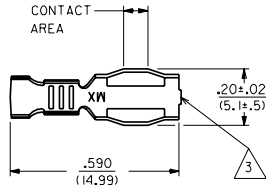
Stocking Distributor

Click to view price, real time Inventory, Delivery & Lifecycle Information:

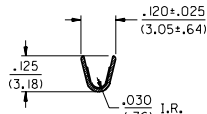
[Molex Connector Corporation](#)
[0005020091](#)

For any questions, you can email us directly:

sales@integrated-circuit.com



SECTION A-A



SECTION B-B

NOTES:

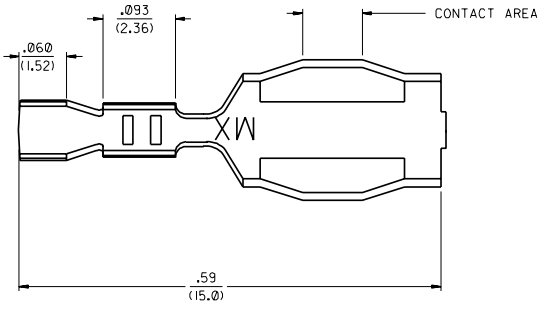
- △ THESE TERMINALS ARE FOR USE WITH THE 1457-1* SERIES HOUSINGS.
- THE -1* GROUP CRIMPS #18 TO #22 AWG WIRE WITH INSULATION DIAMETERS OF .061/(1.55) TO .102/(2.59).
- THE -2* GROUP CRIMPS #14 TO #16 AWG WIRE WITH AN INSULATION DIAMETER OF .140/(3.56) MAX.
- △ THESE TERMINALS ARE PRODUCED ONLY FOR EXPORT TO JAPAN.
- △ CARRIER CUT OFF DIMENSION: .007/(.18) MAX.
- △ PRODUCT SPECIFICATION PS 50-36 APPLIES.
- △ A 4° ANGLE IS ALLOWED.

MATERIAL:
260 BRASS

PART NO.	ENG. NO.	DIM.C	DIM.D	DIM.E	FORM	PLATING PER SDES-
05-02-0047	1457-1	.145±.025	.135	.045	CHAIN	88-P901
05-02-0048	1457-1L	(3.68±.64)	(3.43)	(1.14)	LOOSE	TIN
05-02-0056	1457-1G	.145±.025	.135	.045	CHAIN	88-P550
05-02-0057	1457-1GL	(3.68±.64)	(3.43)	(1.14)	LOOSE	SEL. GOLD
05-02-0058	1457-1(P555)	.145±.025	.135	.045	CHAIN	88-P555
	1457-1(P555)L	(3.68±.64)	(3.43)	(1.14)	LOOSE	SEL. GOLD
05-02-0049	1457-2	.21±.03	.185±.015	.060	CHAIN	88-P901
05-02-0050	1457-2L	(5.3±.8)	(4.70±.38)	(1.52)	LOOSE	TIN

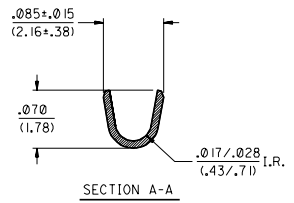
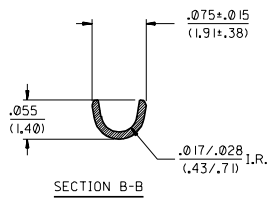
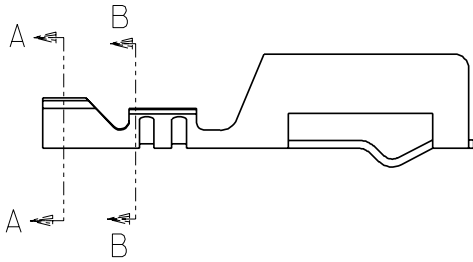
3	S
2	S
1	S

REV ADD -6* ECR U60463 12-19-95 SAMIEC	DIMENSIONS SHOWN METRIC INCH UNLESS OTHERWISE SPECIFIED TOLERANCES IN MILLIMETERS	REVISE ONLY ON CAD SYSTEM
ADDED OPTION ECN #13, 0816 01-14-93 RHR	INCH METRIC 3 PLACE ±.010 --- 2 PLACE ±.014 ±0.25 1 PLACE --- ±0.35	TERMINAL, COMMONING, CRIMP (1457-1* AND 1457-2*)
ADD OPTIONS & REDRAW ECN #10538 02-11-91 A.GUZIK	DRAWING APPLICABLE MUST REMAIN WITHIN DIMENSIONS	MOLEX INCORPORATED SHEET NO. 1 OF 3 DATE 02/11/91
LTR. REVISIONS	DRG. BY: AFG CHKD. BY: RHR APP'D. BY: GWF SCALE: 4:1	SEE CHART FILE NAME: SD1457X1 THIS DRAWING CONTAINS INFORMATION THAT IS PROPRIETARY TO MOLEX, INC. AND SHOULD NOT BE USED WITHOUT WRITTEN PERMISSION.



NOTES:

1. FOR ALL OTHER DIMENSIONS SEE SHEET 1.
2. THE -6* GROUP CRIMPS #24 TO #30 AWG WIRE WITH AN INSULATION DIAMETER OF .050/(1.27)



PART NO.	ENG. NO.	FORM	PLATING
05-02-0091	1457-6	CHAIN	TIN PER
05-02-0092	1457-6L	LOOSE	SDES-88

SEE SHEET 1		DIMENSIONS SHOWN METRIC INCH UNLESS OTHERWISE SPECIFIED TOLERANCES IN INCH ± .005 5.0		▽ = 0	▼ = 0	REVISE ONLY ON CAD SYSTEM
	SEE SHEET 1	3 PLACE ± .010	---			TITLE
	SEE SHEET 1	2 PLACE ± .014	± 0.25			TERMINAL, COMMONING, CRIMP
	SEE SHEET 1	1 PLACE ---	± 0.36			(1457-6*)
S	SEE SHEET 1	DRAFT WHERE APPLICABLE MUST REMAIN WITHIN DIMENSIONS				MOLEX INCORPORATED
RI	SEE SHEET 1	DRG. NO.	AFG	CHK'D.	RHR	DATE
R	SEE SHEET 1	APP'D.	GWF	SCALE	4 : 1	02 / 11 / 91
LTR.	REVISIONS	LTR.	REVISIONS	FILE NAME	SD1457X3	SHEET NO. 3
				THIS DRAWING CONTAINS INFORMATION THAT IS PROPRIETARY TO MOLEX INC. AND SHOULD NOT BE USED WITHOUT WRITTEN PERMISSION.		DRG. FILE
						CP C