

Excellent Integrated System Limited

Stocking Distributor

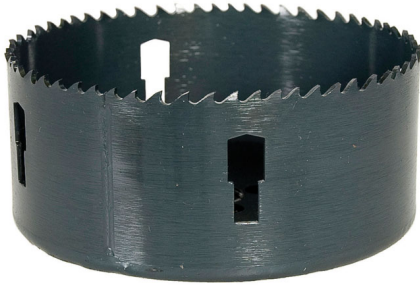
Click to view price, real time Inventory, Delivery & Lifecycle Information:

[Greenlee Communications](#)

[825-4-1/4](#)

For any questions, you can email us directly:

sales@integrated-circuit.com



HOLESAW, VARIABLE PITCH (4 1/4")

Bi-Metal Hole Saws

Cat No: 825-4-1/4

UPC No: 783310191780

Description

- Cut through steel, tin, aluminum, fiberglass, wood and plastic
- Deep 1-5/8 IN (41.3 mm) cutting depth allows for cutting through 2 IN x 4 IN wood studs
- Extra-tough bi-metal blade- we use the highest grade of tool steel to outlast competitor's blades. That beats premature saw replacement and saves you money
- Steam oxide finish - no paint to gum up and slow cutting. The saw runs cooler for longer life and better performance
- Extra-thick backplate minimizes vibration for smoother, easier, less tiring cutting
- Made in USA

Specifications

- Cutting Size : 1-5/8 IN
- Hole Diameter : 4-1/4 IN
- Material : Bi-Metal
- Pipe Tap Size : 4.000 IN
- Type : Variable Pitch
- Use With Quick Change Arbor No. : 2801
- Use With Standard Arbor No. : 37156