

Excellent Integrated System Limited

Stocking Distributor

Click to view price, real time Inventory, Delivery & Lifecycle Information:

[TE Connectivity AMP Connectors](#)
[558397-1](#)

For any questions, you can email us directly:

sales@integrated-circuit.com

4

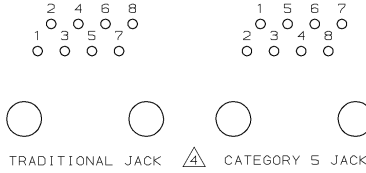
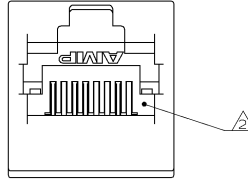
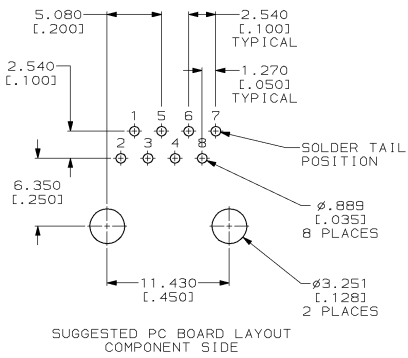
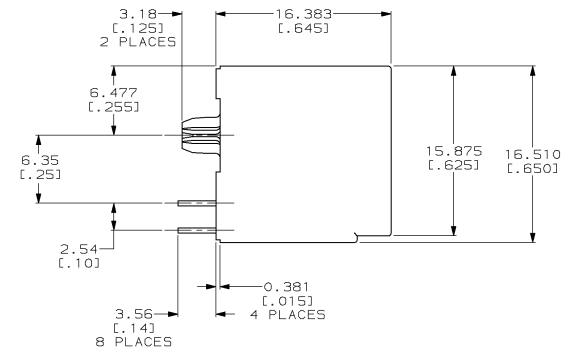
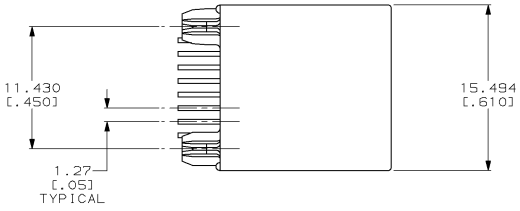
3

2

1

THIS DRAWING IS UNPUBLISHED. RELEASED FOR PUBLICATION BY AMP INCORPORATED. ALL RIGHTS RESERVED.

LOC		REV		REVISIONS		
AA	22	F	TR	DESCRIPTION	DATE	DWG
		E		REV, EC 0502-0016-98	22JAN98	DS CB



- △ MATERIAL: HOUSING - POLYESTER MOLDING COMPOUND, BLACK, UL 94V-0. TERMINALS - 0.33 [0.013] THICK PHOS BRONZE PLATED WITH 1.27µm [0.00050] MINIMUM THICK HARD GOLD IN LOCALIZED AREA AND 3.81µm [0.00150] MINIMUM THICK TIN-LEAD IN SOLDER AREA OVER 1.27µm [0.00050] MINIMUM THICK UNDERPLATE. TERMINAL INSERT PLASTIC: POLYESTER MOLDING COMPOUND, GRAY, UL 94V-0.
- △ JACK CAVITY CONFORMS TO FCC RULES AND REGULATIONS, PART 68 SUBPART F.
- 3. ALL DIMENSIONS SHOWN ARE NOMINAL UNLESS OTHERWISE SPECIFIED.
- △ CAUTION: CATEGORY 5 JACK SOLDER TAIL POSITIONS DO NOT FOLLOW SAME NUMBER SEQUENCE AS THAT OF TRADITIONAL JACKS.

558397-1
PART NO.

THIS DRAWING IS UNPUBLISHED. RELEASED FOR PUBLICATION BY AMP INCORPORATED. ALL RIGHTS RESERVED.		DWG D. STRAUSSER	OS/ISSUE	AMP Incorporated Harrisburg, PA 17105-3608	
DIMENSIONS: mm (INCHES)		CHK N. JONES	OS/ISSUE	AMP Incorporated Harrisburg, PA 17105-3608	
TOLERANCES UNLESS OTHERWISE SPECIFIED:		DWG J. TONEY	OS/ISSUE	AMP Incorporated Harrisburg, PA 17105-3608	
Ø P/LC	F-	NAME	NAME	MODULAR JACK ASSEMBLY, 8 POSITION, TOP ENTRY, CATEGORY 5	
P P/LC	F-	PRODUCT SPEC	NAME	MODULAR JACK ASSEMBLY, 8 POSITION, TOP ENTRY, CATEGORY 5	
D P/LC	F0, 0.251 (0.01)	APPLICATION SPEC	NAME	MODULAR JACK ASSEMBLY, 8 POSITION, TOP ENTRY, CATEGORY 5	
R P/LC	F0, 1.27 (0.05)	APPLICATION SPEC	NAME	MODULAR JACK ASSEMBLY, 8 POSITION, TOP ENTRY, CATEGORY 5	
ANGLES	F-	APPLICATION SPEC	NAME	MODULAR JACK ASSEMBLY, 8 POSITION, TOP ENTRY, CATEGORY 5	
MATERIAL	P/PLAST	WEIGHT	NAME	MODULAR JACK ASSEMBLY, 8 POSITION, TOP ENTRY, CATEGORY 5	
		CUSTOMER DRAWING	NAME	MODULAR JACK ASSEMBLY, 8 POSITION, TOP ENTRY, CATEGORY 5	
			SCALE	MODULAR JACK ASSEMBLY, 8 POSITION, TOP ENTRY, CATEGORY 5	