



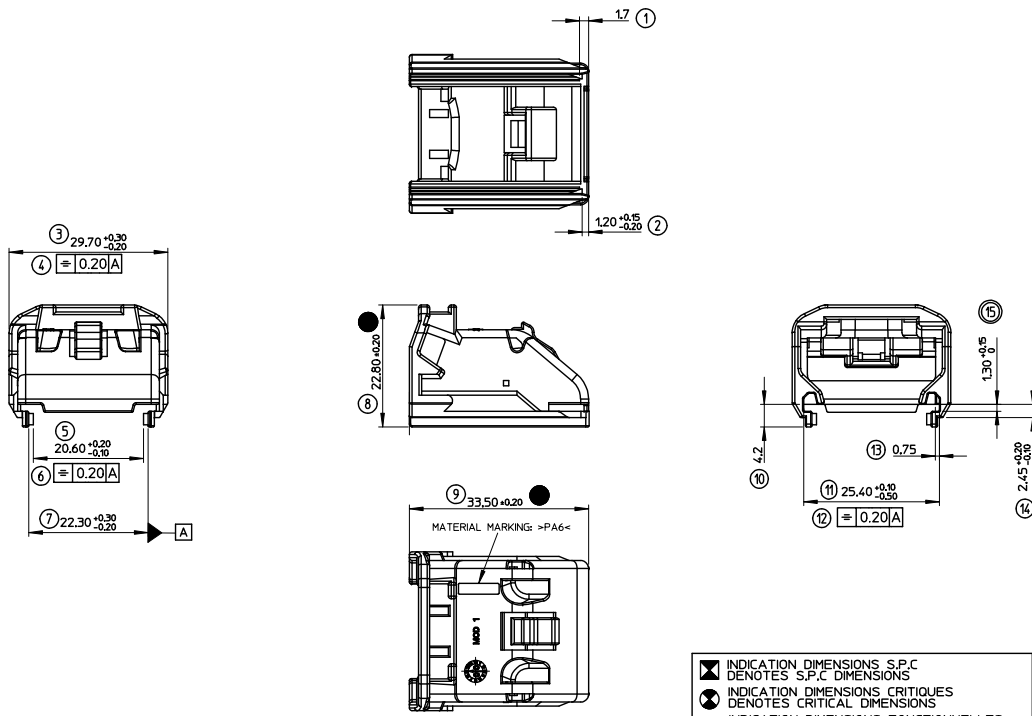
## **Excellent Integrated System Limited**

Stocking Distributor

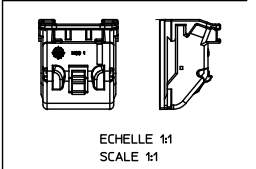
Click to view price, real time Inventory, Delivery & Lifecycle Information:

[Molex Connector Corporation](#)  
[0986491003](#)

For any questions, you can email us directly:  
[sales@integrated-circuit.com](mailto:sales@integrated-circuit.com)



INDICATION DIMENSIONS S.P.C DENOTES S.P.C DIMENSIONS  
 INDICATION DIMENSIONS CRITIQUES DENOTES CRITICAL DIMENSIONS  
 INDICATION DIMENSIONS FONCTIONNELLES DENOTES FUNCTIONAL DIMENSIONS  
 QUANTITE PAR FEUILLE INDIVIDUELLE  
 QUANTITY PER INDIVIDUAL SHEET  
 0     0     2



**NOTES :**  
 1- CAHIER DE PRECONISATION: RAS-98644-005  
 APPLICATION SPECIFICATION: RAS-98644-005  
 2- LE CAPOT S'ASSEMBLE AVEC LES PORTE-CLIPS EQUIPES SORTIE DROITE  
 REFERENCE : 098944XXXX OU SORTIE GAUCHE REFERENCE : 098944XXXX  
 THE WIRE CAP IS ASSEMBLED WITH THE ASSEMBLED FEMALE MODULE RIGHT WIRE OUTPUT  
 PART NUMBER : 098944XXXX OR LEFT WIRE OUTPUT PART NUMBER : 098944XXXX  
 3- POIDS PIECE: 4,898 g  
 PART WEIGHT: 4,898 g

UPDATE DIM 11 EC NO: G2013-0359 DRW:VJ/DJAS 2013/06/13 CHK:K/BOUCHAN 2013/06/13 APPR:J/LESSIS 2013/07/08 REV DESCRIPTION	GENERAL TOLERANCES (UNLESS SPECIFIED)		DIMENSION STYLE MM ONLY		SCALE 2:1	DESIGN UNITS METRIC	FIRST ANGLE PROJECTION
	4 PLACES	± 0.10	± 0.004	DRAWN BY	DATE	TITLE <b>CAPOT 32 VOIES CMC</b> <b>WIRE CAP CMC 32 WAY</b>  <b>molex</b> DOCUMENT NO. SD-98649-010 SHEET NO. 1 OF 1	
	3 PLACES	± 0.10	± 0.004	PGR	99/12/13		
	2 PLACES	± 0.10	± 0.004	CHECKED BY	DATE		
1 PLACE	± 0.15	± 0.005	PDE	99/12/13			
0 PLACE	± 0.15	± 0.005	APPROVED BY	DATE			
		± 0.15	± 0.005	C80	99/12/13		
		± 0.15	± 0.005	MATERIAL NO. 0986491003			
DRAFT WHERE APPLICABLE MUST REMAIN WITHIN DIMENSIONS		ANGLAR ±1/2°		SIZE A2		THIS DRAWING CONTAINS INFORMATION THAT IS PROPRIETARY TO MOLEX INCORPORATED AND SHOULD NOT BE USED WITHOUT WRITTEN PERMISSION	