



Excellent Integrated System Limited

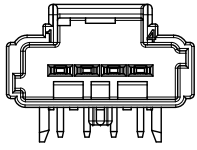
Stocking Distributor

Click to view price, real time Inventory, Delivery & Lifecycle Information:

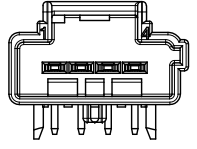
[Molex Connector Corporation](#)
[0987731011](#)

For any questions, you can email us directly:

sales@integrated-circuit.com

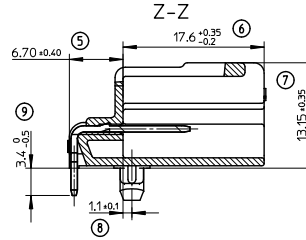
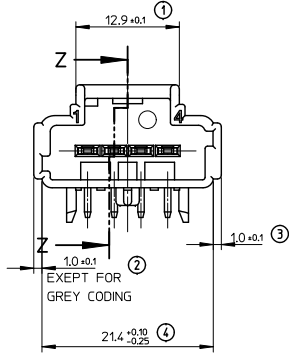
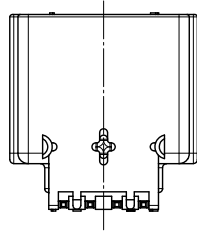


BLACK | 0987731011
COLOR | MOLEX P/N



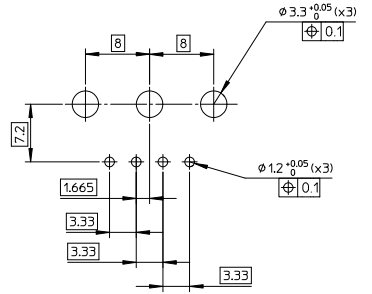
GREY | 0987731018
COLOR | MOLEX P/N

CODINGS

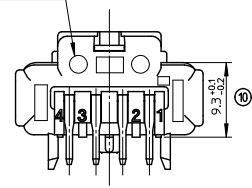


HEADER SUPPORT HOLE DIMENSION

THICKNESS OF PRINTED CIRCUIT 1.6±0.16



DATE, MONTH AND YEAR



NOTE:

PACKAGING : PK-98773-001
APPLICATION SPEC : AS-98773-001

2	4	PN 15 X 0.8	BRASS-TIN PLATED	2.73 g
1	1	HEADER 15X0.8 4CKT	>PA66<	
ITEM	QTY	DESCRIPTION	MATERIAL	WEIGHT

INSPECTION BALLOON NUMBER LOG

PER DRAWING REVISION: A
LAST BALLOON NUMBER USED: 10
ADDED BALLOON NUMBERS:
REMOVED BALLOON NUMBERS:



SCALE 1:1

FIRST RELEASE EC NO: G2012-0715 DRAWN BY: VJOUAS CHKD: AHERBELIN APPROVED: OPLESSIS	QUALITY SYMBOLS ▽=0 ▽=0 ▽=0	GENERAL TOLERANCES (UNLESS SPECIFIED) mm INCH 4 PLACES ±--- ±--- 3 PLACES ±--- ±--- 2 PLACES ±0.20 ±--- 1 PLACE ±0.2 ±--- 0 PLACE ±0.2 ±---	DIMENSION STYLE MM ONLY	SCALE 3:1	DESIGN UNITS METRIC	FIRST ANGLE PROJECTION
			DRAWN BY: VJOUAS CHECKED BY: AHERBELIN APPROVED BY: OPLESSIS	DATE: 2012/04/10 DATE: 2012/04/12 DATE: 2012/04/20	TITLE HEADER W/ 15X0.8 4CKT	molex
REV: A	DESCRIPTION: FIRST RELEASE	ANGULAR ± 3°	MATERIAL NO. SEE CHART	DOCUMENT NO. SD-98773-001	SHEET NO. 1 OF 1	