

## Excellent Integrated System Limited

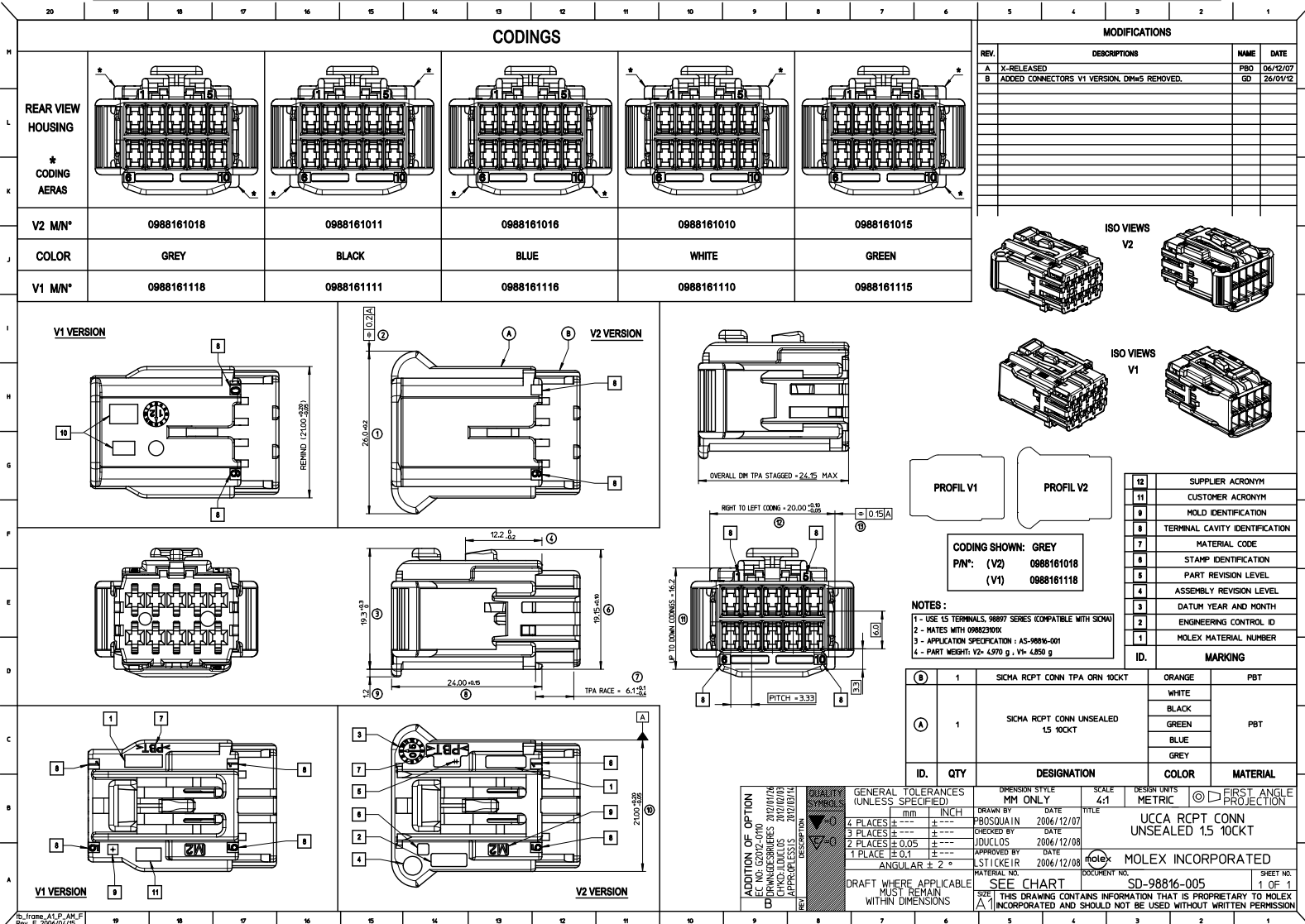
Stocking Distributor

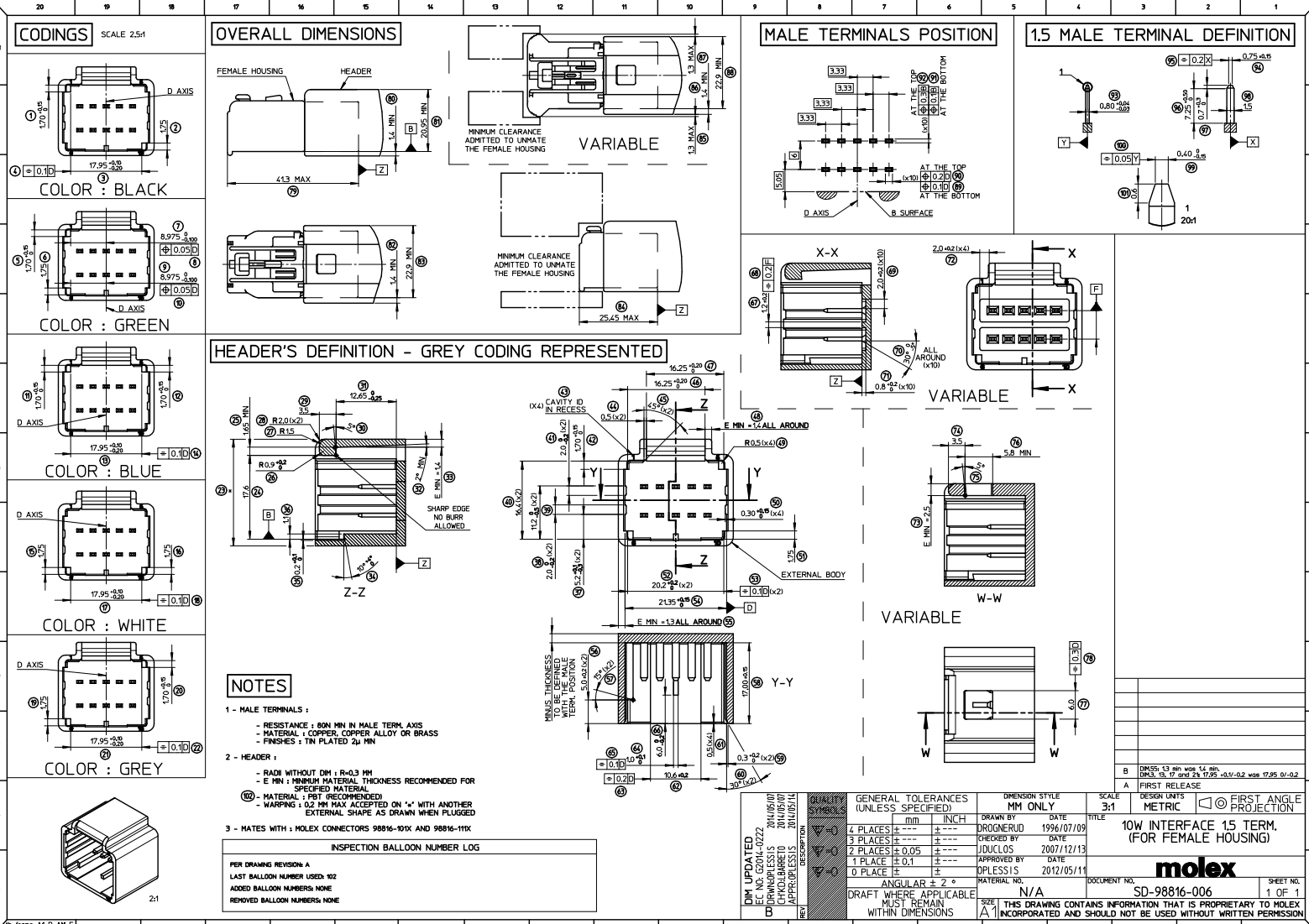
Click to view price, real time Inventory, Delivery & Lifecycle Information:

[Molex Connector Corporation](#)  
[0988161015](#)

For any questions, you can email us directly:

[sales@integrated-circuit.com](mailto:sales@integrated-circuit.com)





B	DRSS: 13 pin w/ 14 pin, DRSS: 15, 17 and 24 17.95, ±0.1/-0.2 max 17.95 0/-0.2						
A	FIRST RELEASE						
<table border="1"> <tr> <th>SCALE</th> <th>3:1</th> </tr> <tr> <th>DESIGN UNITS</th> <td>METRIC</td> </tr> <tr> <th>FIRST ANGLE PROJECTION</th> <td><input checked="" type="checkbox"/></td> </tr> </table>		SCALE	3:1	DESIGN UNITS	METRIC	FIRST ANGLE PROJECTION	<input checked="" type="checkbox"/>
SCALE	3:1						
DESIGN UNITS	METRIC						
FIRST ANGLE PROJECTION	<input checked="" type="checkbox"/>						
<p><b>molex</b></p> <p>DOCUMENT NO. SD-98816-006 SHEET NO. 1 OF 1</p>							

<p><b>GENERAL TOLERANCES (UNLESS SPECIFIED)</b></p> <table border="1"> <tr> <th>PLACES</th> <th>mm</th> <th>INCH</th> </tr> <tr> <td>4 PLACES</td> <td>±0.10</td> <td>±0.004</td> </tr> <tr> <td>3 PLACES</td> <td>±0.15</td> <td>±0.005</td> </tr> <tr> <td>2 PLACES</td> <td>±0.20</td> <td>±0.008</td> </tr> <tr> <td>1 PLACE</td> <td>±0.30</td> <td>±0.012</td> </tr> <tr> <td>0 PLACE</td> <td>±0.50</td> <td>±0.020</td> </tr> </table>	PLACES	mm	INCH	4 PLACES	±0.10	±0.004	3 PLACES	±0.15	±0.005	2 PLACES	±0.20	±0.008	1 PLACE	±0.30	±0.012	0 PLACE	±0.50	±0.020	<p><b>ANGULAR ± 2°</b></p> <p><b>DRAFT WHERE APPLICABLE MUST REMAIN WITHIN DIMENSIONS</b></p>	<p><b>DIMENSION STYLE</b></p> <p>MM ONLY</p>	<p><b>SCALE</b></p> <p>3:1</p>	<p><b>DESIGN UNITS</b></p> <p>METRIC</p>	<p><b>FIRST ANGLE PROJECTION</b></p> <p><input checked="" type="checkbox"/></p>
PLACES	mm	INCH																					
4 PLACES	±0.10	±0.004																					
3 PLACES	±0.15	±0.005																					
2 PLACES	±0.20	±0.008																					
1 PLACE	±0.30	±0.012																					
0 PLACE	±0.50	±0.020																					

**NOTES**

- MALE TERMINALS:**
  - RESISTANCE: 80M OHM IN MALE TERM. AXIS
  - MATERIAL: COPPER, COPPER ALLOY OR BRASS
  - FINISHES: TIN PLATED 2µ MIN
- HEADER:**
  - RADI WITHOUT DIM: R=0.3 MM
  - E MIN: MINIMUM MATERIAL THICKNESS RECOMMENDED FOR SPECIFIED MATERIAL
  - MATERIAL: PBT (RECOMMENDED)
  - WARNING: 0.2 MM MAX ACCEPTED ON "Z" WITH ANOTHER EXTERNAL SHAPE AS DRAWN WHEN PLUGGED
- MATES WITH: MOLEX CONNECTORS 98816-101X AND 98816-111X**

INSPECTION BALLOON NUMBER LOG	
PER DRAWING REVISION A	
LAST BALLOON NUMBER USED: 102	
ADDED BALLOON NUMBERS: NONE	
REMOVED BALLOON NUMBERS: NONE	