

Excellent Integrated System Limited

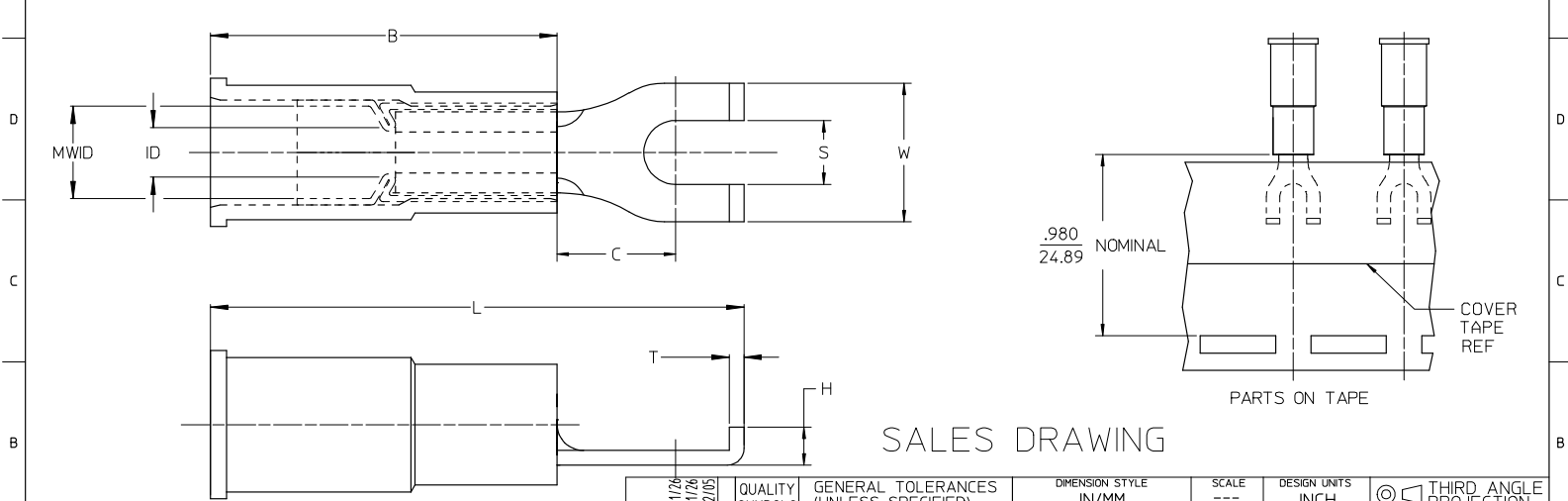
Stocking Distributor

Click to view price, real time Inventory, Delivery & Lifecycle Information:

[Molex Connector Corporation](#)
[0191250033](#)

For any questions, you can email us directly:
sales@integrated-circuit.com

LOOSE P.TECE		TAPE MOUNTED		DIMENSIONS										FINISH
MATERIAL NUMBER	ENGINEERING NUMBER	MATERIAL NUMBER	ENGINEERING NUMBER	STUD SIZE	S ±.005	W MAX	C MIN	ID MIN	MWID	B REF	L MAX	H REF	T REF	INSULATION COLOR
191250003	A-515-06	191250004	A-515-06T	6	.146/3.71	.301/7.6	.207/5.3	.054/1.37	.138/3.51	.536/13.61	.927/23.55	.08/2.0	.031/0.79	RED
191250005	A-515-08	191250006	A-515-08T	8	.173/4.39	.301/7.6	.207/5.3	.054/1.37	.138/3.51	.536/13.61	.927/23.55	.08/2.0	.031/0.79	RED
191250007	A-515-10	191250008	A-515-10T	10	.198/5.03	.301/7.6	.207/5.3	.054/1.37	.138/3.51	.536/13.61	.927/23.55	.08/2.0	.031/0.79	RED
191250033	B-516-06	191250034	B-516-06T	6	.146/3.71	.301/7.6	.209/5.3	.081/2.06	.165/4.19	.536/13.61	.936/23.77	.08/2.0	.031/0.79	BLUE
191250035	B-516-08	191250036	B-516-08T	8	.173/4.39	.301/7.6	.209/5.3	.081/2.06	.165/4.19	.536/13.61	.936/23.77	.08/2.0	.031/0.79	BLUE
191250037	B-516-10	191250038	B-516-10T	10	.198/5.03	.301/7.6	.209/5.3	.081/2.06	.165/4.19	.536/13.61	.936/23.77	.08/2.0	.031/0.79	BLUE
191250074	C-517-06	191250075	C-517-06T	6	.146/3.71	.345/8.8(A)	.270/6.85(A)	.128/3.25	.225/5.71	.669/16.99	1.165/29.6(A)	.10/2.5	.040/1.02	YELLOW
191250076	C-517-08	191250077	C-517-08T	8	.173/4.39	.385/9.8	.270/6.85(A)	.128/3.25	.225/5.71	.669/16.99	1.165/29.6(A)	.10/2.5	.040/1.02	YELLOW
191250078	C-517-10	191250079	C-517-10T	10	.209/5.3(A)	.385/9.8	.270/6.85(A)	.128/3.25	.225/5.71	.669/16.99	1.165/29.6(A)	.10/2.5	.040/1.02	YELLOW



SALES DRAWING

- NOTES:
1. MATERIAL: COPPER
 2. PLATING: ELECTRO-TIN
 3. MWID = MAXIMUM WIRE INSULATION DIAMETER
 4. PART IS RoHS COMPLIANT

STANDARDIZE EC NO: ETC2008-0012 DRAWN BY: DRUMRSTONE 2007/11/26 CHKD: MACNEIL 2007/11/26 APPR: MACNEIL 2007/12/05	DESCRIPTION	QUALITY SYMBOLS	GENERAL TOLERANCES (UNLESS SPECIFIED)	DIMENSION STYLE IN/MM	SCALE ---	DESIGN UNITS INCH	THIRD ANGLE PROJECTION		
		▽=0						mm	INCH
		▽=0						4 PLACES ± --- ± ---	3 PLACES ± --- ± .005
								2 PLACES ± 0.13 ± .01	1 PLACE ± 0.25 ± ---
		ANGULAR ± 1/2°							
		DRAFT WHERE APPLICABLE MUST REMAIN WITHIN DIMENSIONS	MATERIAL NO. SEE CHART	DOCUMENT NO. SD-19125-001	TITLE FLANGED SPADE TERMINAL, AVIKRIMP -500 SERIES,			SHEET NO. 1 OF 1	
<p>THIS DRAWING CONTAINS INFORMATION THAT IS PROPRIETARY TO MOLEX INCORPORATED AND SHOULD NOT BE USED WITHOUT WRITTEN PERMISSION</p>									