

Excellent Integrated System Limited

Stocking Distributor

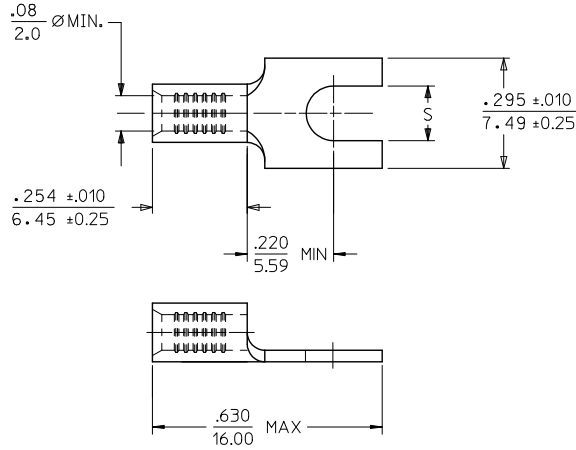
Click to view price, real time Inventory, Delivery & Lifecycle Information:

[Molex Connector Corporation](#)
[0191280021](#)

For any questions, you can email us directly:

sales@integrated-circuit.com

10	9	8	7	6	5	4	3	2	19128
MATERIAL NUMBER	ENGINEERING NUMBER	STUD SIZE	"S" ±.005/(0.13)	PACKAGING					
191280021	B-1781-06	6	.146/(3.71)	LOOSE PIECE					
191280023	B-1781-08	8	.173/(4.39)						
191280025	B-1781-10	10	.198/(5.03)						



SALES DRAWING

- NOTES:
 1. MATERIAL: COPPER .031/(0.79) THICK.
 2. PLATING: TIN
 3. INSULATION: NONE
 4. PARTS ARE ROHS COMPLIANT.

RELEASE SD EC NO: WNA2009-0593 DRAWN: ETHRODAHL 2009/03/16 CHKD: JMACNEIL 2009/03/20 APPR: JMACNEIL 2009/03/20 REV A	QUALITY SYMBOLS	GENERAL TOLERANCES (UNLESS SPECIFIED)		DIMENSION STYLE IN/MM		SCALE 4:1	DESIGN UNITS INCH	THIRD ANGLE PROJECTION
	▽=0	4 PLACES ±---	±---	mm	INCH	DRAWN BY ETHRODAHL	DATE 2009/03/16	TITLE BLOCK SPADE KRIMPTITE LONG BARREL 16-14 AWG
	▽=0	3 PLACES ±---	±.005			CHECKED BY JMACNEIL	DATE 2009/03/16	MOLEX INCORPORATED DOCUMENT NO. SD-19128-001 SHEET NO. 1 OF 1
		2 PLACES ±0.13	±---			APPROVED BY JMACNEIL	DATE 2009/03/16	
		1 PLACE ±---	±---					
		ANGULAR ±---				MATERIAL NO. SEE CHART		
		DRAFT WHERE APPLICABLE MUST REMAIN WITHIN DIMENSIONS		SIZE B THIS DRAWING CONTAINS INFORMATION THAT IS PROPRIETARY TO MOLEX INCORPORATED AND SHOULD NOT BE USED WITHOUT WRITTEN PERMISSION				