

Excellent Integrated System Limited

Stocking Distributor

Click to view price, real time Inventory, Delivery & Lifecycle Information:

[Molex Connector Corporation](#)
[0350254002](#)

For any questions, you can email us directly:

sales@integrated-circuit.com

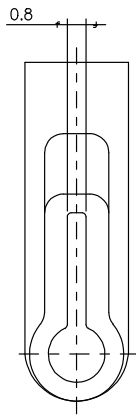
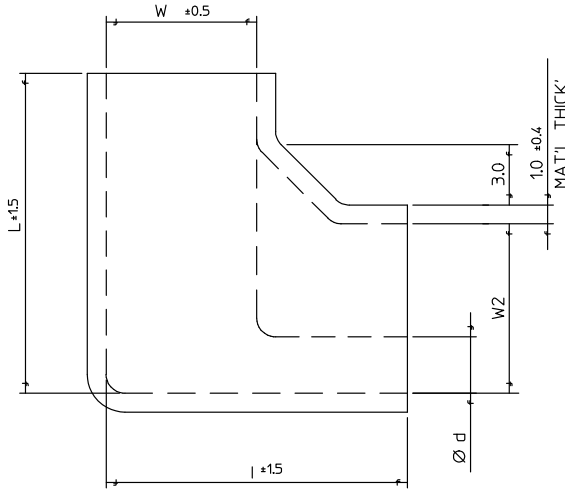
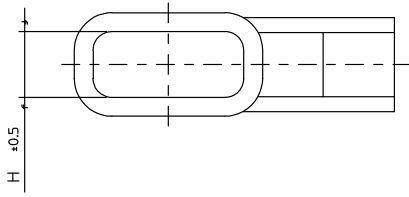


TABLE	ENG.NO.	DIMENSION						APPLICABLE TER'
		Ø d	l	L	W	w2	H	
	35018-30*2	Ø 3.0	12.0	13.0	5.7	6.0	2.3	.187 FLAG REC'
	35025-40*2	Ø 4.0	16.0	17.0	8.0	9.0	3.5	.250 FLAG REC'

NOTES
 1. MATERIAL: PVC
 LEGEND
 35018-30*2 0 : WHITE COLOR 60°C 600V
 (35025-40*2) 4 : BLUE COLOR 105°C 600V

NEW RELEASED EC NO: KOR2008-0194 DRWING: JHPARK01 2008/06/03 CHK: KIM YONG 2008/06/03 APPR: YUNSIKILIM 2008/06/04	QUALITY SYMBOLS	GENERAL TOLERANCES (UNLESS SPECIFIED)	DIMENSION STYLE	SCALE	DESIGN UNITS	THIRD ANGLE PROJECTION
	▽=0 ▽=0	mm INCH 4 PLACES ± --- ± --- 3 PLACES ± --- ± --- 2 PLACES ± --- ± --- 1 PLACE ± 0.1 ± --- ANGULAR ± 1 °	MM ONLY	5:1	METRIC	
	DRAWN BY WY. YANG CHECKED BY DATE 1996/01/16	DATE TITLE INSULATION SLEEVE FOR FLAG RECEPTACLE	APPROVED BY DATE	MOLEX INCORPORATED		
	DRAFT WHERE APPLICABLE MUST REMAIN WITHIN DIMENSIONS	MATERIAL NO. SEE TABLE	DOCUMENT NO. SD-35018-003	SHEET NO. 1 OF 01		