

Excellent Integrated System Limited

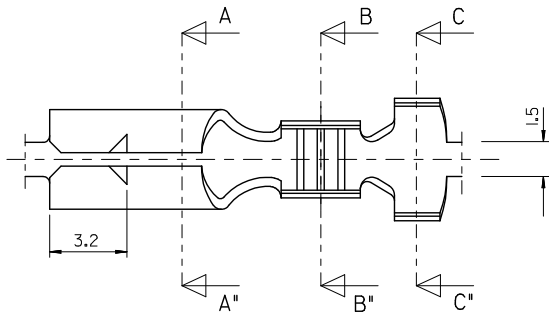
Stocking Distributor

Click to view price, real time Inventory, Delivery & Lifecycle Information:

[Molex Connector Corporation](#)
[0357303100](#)

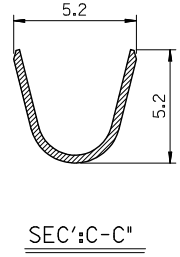
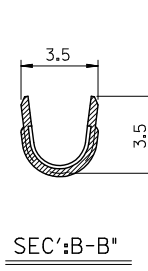
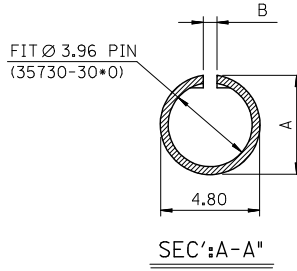
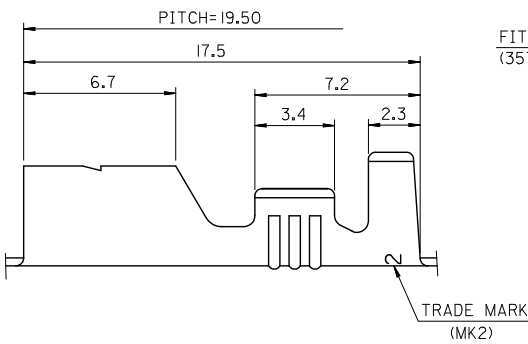
For any questions, you can email us directly:

sales@integrated-circuit.com



NOTES

1. MATERIAL : BRASS
2. FINISH : 35730-3100 : UNPLATED
 @ 35730-3110 : TIN PLATED
 1.0 μm MIN. TIN PLATING
 OVERALL 0.3~0.8μm COPPER PLATING
3. PRODUCT SPECIFICATION : PS-35730-001
4. MATES WITH : 35730-30*0
5. APPLICABLE WIRE RANGE : AWG #20~#14



ENG.NO.	DIMENSION	
	A	B
35730-3100	4.50	0.70
35730-3110	4.60	0.90

TABLE1

REVISED EC NO: KOR2009-0115 DRAWN: JHPARK01 2009/01/29 CHYKHWY YANG 2009/01/29 APPR: YUNSLIKIM 2009/01/29 REV. DESCRIPTION	QUALITY SYMBOLS	GENERAL TOLERANCES (UNLESS SPECIFIED)	DIMENSION STYLE	SCALE	DESIGN UNITS	THIRD ANGLE PROJECTION																		
	▽=0 ▽=0	<table border="1"> <tr> <th></th> <th>mm</th> <th>INCH</th> </tr> <tr> <td>4 PLACES</td> <td>±---</td> <td>±---</td> </tr> <tr> <td>3 PLACES</td> <td>±---</td> <td>±---</td> </tr> <tr> <td>2 PLACES</td> <td>±0.20</td> <td>±---</td> </tr> <tr> <td>1 PLACE</td> <td>±0.30</td> <td>±---</td> </tr> <tr> <td colspan="3">ANGULAR ±---°</td> </tr> </table>		mm	INCH	4 PLACES	±---	±---	3 PLACES	±---	±---	2 PLACES	±0.20	±---	1 PLACE	±0.30	±---	ANGULAR ±---°			MM ONLY	6:1	METRIC	
		mm	INCH																					
	4 PLACES	±---	±---																					
	3 PLACES	±---	±---																					
2 PLACES	±0.20	±---																						
1 PLACE	±0.30	±---																						
ANGULAR ±---°																								
	DRAFT WHERE APPLICABLE MUST REMAIN WITHIN DIMENSIONS	DRAWN BY JS. KANG DATE 1993/06/15 CHECKED BY BK. CHOI DATE 1993/06/15 APPROVED BY CW. LEE DATE 1993/06/15	TITLE	3.96 PIN RECEPTACLE																				
		MATERIAL NO. SEE NOTES	MOLEX INCORPORATED DOCUMENT NO. SD-35730-31*0 SHEET NO. 1 OF 01																					