

## Excellent Integrated System Limited

Stocking Distributor

Click to view price, real time Inventory, Delivery & Lifecycle Information:

[Molex Connector Corporation](#)  
[0357605300](#)

For any questions, you can email us directly:

[sales@integrated-circuit.com](mailto:sales@integrated-circuit.com)

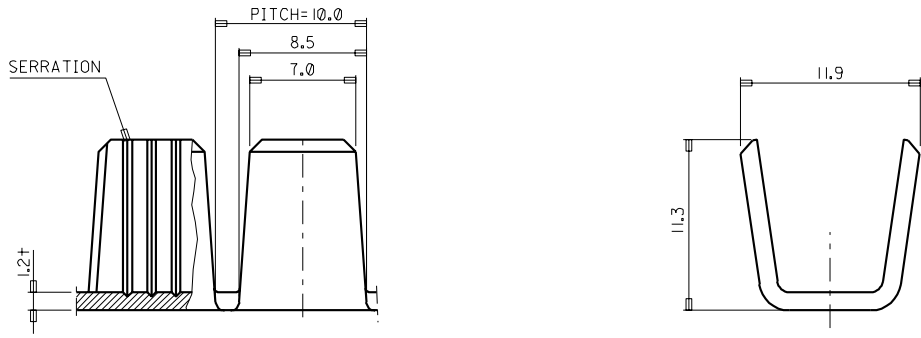
DO NOT SCALE DRAWING  
DIMENSION IN METRIC

ENG. NO. SD 35760-5300

EDP NO.

PROJECT NO.

SIMILAR ITEM



ASS'Y PART		QTY/REEL OR PACK	SURFACE AREA	MATERIAL	WIRE RANGE	GENERAL TOLERANCES	MOLEX-KOREA CO.,LTD.
DESCRIPTION	ENG.NO.	///	/// MM <sup>2</sup>	BRASS, 1.2t	AWG:	DIM. : ±0.5	
///	///	DIE NO. ///	LAYOUT NO. ///	DIMENSION CLASSIFICATION <input checked="" type="checkbox"/> : CRITICAL <input checked="" type="checkbox"/> : MAJOR <input type="checkbox"/> : MINOR        ( ) : REFERENCE		REVISE ONLY ON CAD SYSTEM	
///	///	WIRE CRIMP WIDTH ///	INS. CRIMP WIDTH ///	DRAWN BY	INSULATION RANGE	TITLE: AK 3318 SPLICE	
///	///	WBDW ///	IBDW ///	W.Y.YANG	CHK'D BY	ENG.NO. SD 35760-5300	
LTR	REVISION RECORD	ECN	DATE	APP'D BY	SCALE	4:1	REV A
8	7	6	5	4	3	2	MK-9