

## Excellent Integrated System Limited

Stocking Distributor

Click to view price, real time Inventory, Delivery & Lifecycle Information:

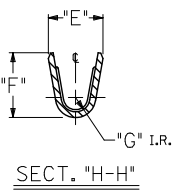
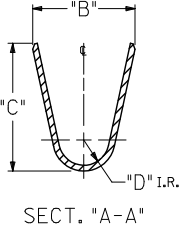
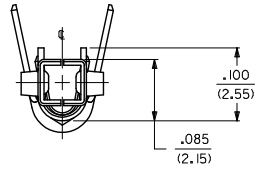
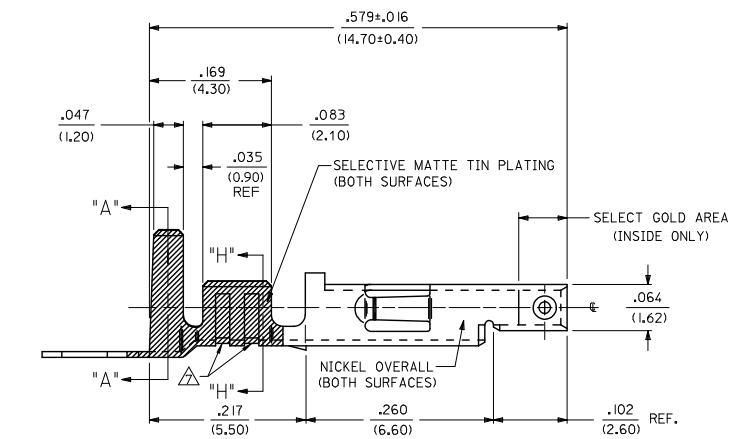
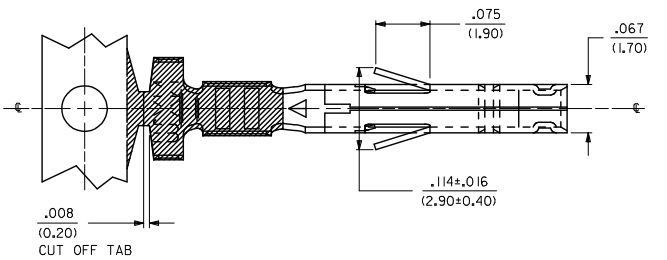
[Molex Connector Corporation](#)  
[44485-1212](#)

For any questions, you can email us directly:

[sales@integrated-circuit.com](mailto:sales@integrated-circuit.com)

**NOTES:**

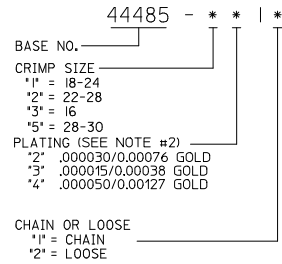
1. MATERIAL: PHOS. BRONZE
2. FINISH:
  - 2 = SELECTIVE GOLD PLATE .000030/(0.00076) MIN., AND SELECTIVE MATTE TIN .000100/(0.00254) OVER .000050/(0.00127) MIN. NICKEL OVERALL.
  - 3 = SELECTIVE GOLD PLATE .000015/(0.00038) MIN., AND SELECTIVE MATTE TIN .000080/(0.00203) OVER .000050/(0.00127) MIN. NICKEL OVERALL.
  - 4 = SELECTIVE GOLD PLATE .000050/(0.00127) MIN., AND SELECTIVE MATTE TIN .000100/(0.00254) OVER .000050/(0.00127) MIN. NICKEL OVERALL.
3. PRODUCT SPECIFICATION: SEE PSX-44485-0001.
4. PACKAGING SPECIFICATION: PK-44485-001 FOR CHAIN TERMINALS  
PK-5556-003 FOR LOOSE TERMINALS
5. MATES WITH 5558, 5566 AND 5569 SERIES CONNECTORS.
6. TERMINAL FOR USE WITH 5557 SERIES HOUSINGS.
7. THE NUMBER OF SERRATIONS TO BE ONE FOR WIRE RANGE #22-28
8. WHEN TERMINALS ARE INSTALLED IN THE HOUSING THE WIRES ARE TO BE DRESSED IN SUCH A MANNER TO ALLOW THE TERMINALS TO FLOAT FREELY IN THE POCKET.
9. THIS TERMINAL IS DESIGNED FOR SINGLE WIRE CRIMPING
10. PART CONFORMS TO CLASS "B" REQUIREMENTS OF COSMETIC SPECIFICATION PS-45499-002



CORRECT DIMS EC NO: UCP2015-4634 2015/04/24 DRAWING/EN CHKD: BELL 2015/04/24 APPR: SMITH 2015/04/26	QUALITY SYMBOLS ∇=0 ∇=0 ∇=0	GENERAL TOLERANCES (UNLESS SPECIFIED)		DIMENSION STYLE		SCALE	DESIGN UNITS	THIRD ANGLE PROJECTION	
				IN/MM		10:1	METRIC		
		4 PLACES ±---	±---	DRAWN BY	DATE	TITLE			
		3 PLACES ±---	±.010	GEP	08/08/94	HIGH CYCL'G TERM FEM CRIMP, MINI-FIT JR. BLANK-PLATE-FORM			
2 PLACES ±0.25	±.014	CHECKED BY	DATE	<b>molex</b> MATERIAL NO. DOCUMENT NO. SHEET NO. SD-44485-**** 1 OF 2					
1 PLACE ±0.36	±---	RJF	08/08/94						
0 PLACE ±---	±---	APPROVED BY	DATE						
		FSMITH	2013/04/26						
		ANGULAR ±1/2°							
DRAFT WHERE APPLICABLE MUST REMAIN WITHIN DIMENSIONS		SEE CHART							
		SIZE C		THIS DRAWING CONTAINS INFORMATION THAT IS PROPRIETARY TO MOLEX INCORPORATED AND SHOULD NOT BE USED WITHOUT WRITTEN PERMISSION					

ITEM NO.	WIRE GAGE	DIM. "B"	DIM. "C"	DIM. "D"	DIM. "E"	DIM. "F"	DIM. "G"
44485-1211		.142±.012	.177±.016	.035	.075±.012	.091±.016	.020
44485-1212	18-24 GA.	(3.60±0.30)	(4.50±0.40)	(0.90)	(1.90±0.30)	(2.30±0.40)	(0.50)
44485-2211		.091±.012	.091±.016	.024	.071±.012	.065±.016	.016
44485-2212	22-28 GA.	(2.30±0.30)	(2.30±0.40)	(0.60)	(1.80±0.30)	(1.65±0.40)	(0.40)
44485-3211		.142±.012	.177±.016	.035	.091±.012	.106±.016	.024
44485-3212	16 GA.	(3.60±0.30)	(4.50±0.40)	(0.90)	(2.30±0.30)	(2.70±0.40)	(0.60)
44485-5211		.091±.012	.091±.016	.024	.050±.010	.044±.010	.010
44485-5212	28-30 GA.	(2.30±0.30)	(2.30±0.40)	(.60)	(1.27±0.25)	(1.12±0.25)	(0.25)
44485-1311		.142±.012	.177±.016	.035	.075±.012	.091±.016	.020
44485-1312	18-24 GA.	(3.60±0.30)	(4.50±0.40)	(0.90)	(1.90±0.30)	(2.30±0.40)	(0.50)
44485-2311		.091±.012	.091±.016	.024	.071±.012	.065±.016	.016
44485-2312	22-28 GA.	(2.30±0.30)	(2.30±0.40)	(0.60)	(1.80±0.30)	(1.65±0.40)	(0.40)
44485-3311		.142±.012	.177±.016	.035	.091±.012	.106±.016	.024
44485-3312	16 GA.	(3.60±0.30)	(4.50±0.40)	(0.90)	(2.30±0.30)	(2.70±0.40)	(0.60)
44485-5311		.091±.012	.091±.016	.024	.050±.010	.044±.010	.010
44485-5312	28-30 GA.	(2.30±0.30)	(2.30±0.40)	(.60)	(1.27±0.25)	(1.12±0.25)	(0.25)
44485-1411		.142±.012	.177±.016	.035	.075±.012	.091±.016	.020
44485-1412	18-24 GA.	(3.60±0.30)	(4.50±0.40)	(0.90)	(1.90±0.30)	(2.30±0.40)	(0.50)
44485-2411		.091±.012	.091±.016	.024	.071±.012	.065±.016	.016
44485-2412	22-28 GA.	(2.30±0.30)	(2.30±0.40)	(0.60)	(1.80±0.30)	(1.65±0.40)	(0.40)
44485-3411		.142±.012	.177±.016	.035	.091±.012	.106±.016	.024
44485-3412	16 GA.	(3.60±0.30)	(4.50±0.40)	(0.90)	(2.30±0.30)	(2.70±0.40)	(0.60)
44485-5411		.091±.012	.091±.016	.024	.050±.010	.044±.010	.010
44485-5412	28-30 GA.	(2.30±0.30)	(2.30±0.40)	(.60)	(1.27±0.25)	(1.12±0.25)	(0.25)

LEGEND:



SEE SHEET 1 DEC NO: UCP2013-4634 DRAWING NO: 2013/04/24 CHKD: BELL APPROV: SMITH 2013/04/26	QUALITY SYMBOLS □=0 □=0 □=0	GENERAL TOLERANCES (UNLESS SPECIFIED)		DIMENSION STYLE		SCALE	DESIGN UNITS	THIRD ANGLE PROJECTION	
				IN/MM		1:1	METRIC		
		4 PLACES ± --- ± ---	3 PLACES ± --- ± .010	2 PLACES ± 0.25 ± .014	1 PLACE ± 0.36 ± ---	0 PLACE ± --- ± ---	DRAWN BY: GEP	DATE: 08/08/94	TITLE: HIGH CYCL'G TERM FEM CRIMP, MINI-FIT JR. BLANK-PLATE-FORM
		ANGULAR ±1/2°		MATERIAL NO.		DOCUMENT NO.		SHEET NO.	
DRAFT WHERE APPLICABLE MUST REMAIN WITHIN DIMENSIONS		SEE CHART		SD-44485-****		2 OF 2			
THIS DRAWING CONTAINS INFORMATION THAT IS PROPRIETARY TO MOLEX INCORPORATED AND SHOULD NOT BE USED WITHOUT WRITTEN PERMISSION									