

## Excellent Integrated System Limited

Stocking Distributor

Click to view price, real time Inventory, Delivery & Lifecycle Information:

[CTS Electronic Components](#)  
[4206-001](#)

For any questions, you can email us directly:

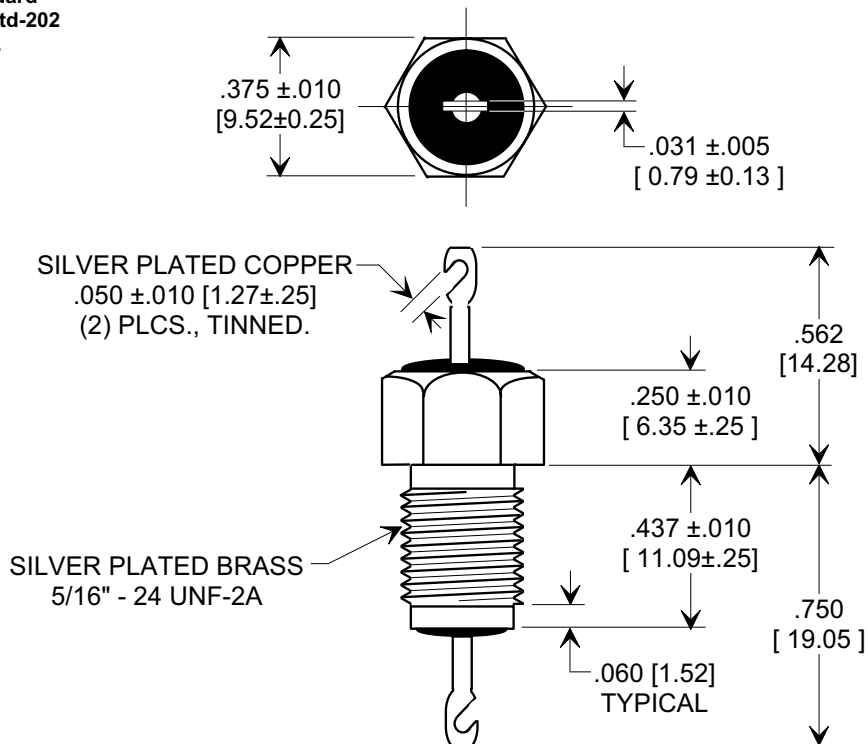
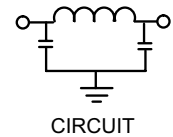
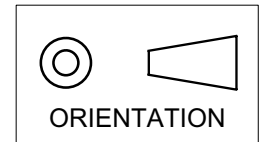
[sales@integrated-circuit.com](mailto:sales@integrated-circuit.com)

## MARKETING SALES DRAWING

DIMENSIONS IN INCHES - DO NOT SCALE THIS DRAWING  
DIMENSIONS IN METRIC - [ ]

This drawing is the property of Tusonix, Inc., and may not be used, reproduced, published or disclosed to others without expressed authorization by Tusonix Inc.



**Electrical Testing  
per Tusonix standard  
test plans and Mil-Std-202  
Test Methods.**



NOTES:

1. TUSONIX STANDARD PART NUMBER: 4206-001.  
TUSONIX RoHS COMPLIANT PART NUMBER: 4206-001 LF.  
CUSTOMER MUST SPECIFY STANDARD OR RoHS PART NUMBER WHEN ORDERING.
2. LEAD FINISH: STANDARD PART #: SILVER PLATED COPPER ALLOY WITH 60/40 SOLDER DIPPED ENDS.  
RoHS PART #: SILVER PLATED COPPER ALLOY WITH 95.5 Sn/3.8 Ag/0.7 Cu, SOLDER DIPPED ENDS.
3. PART MARKING: TRADEMARK AND VARIATION NUMBER ON HEX FLATS.  
STANDARD PART: BLACK INK. RoHS PART: GREEN INK.
4. SUPPLIED WITH SILVER PLATED HEX NUT AND INTERNAL TOOTH LOCK WASHER.

3000 MIN.	1000	500	25 A	10 G $\Omega$	2400 VDC	10	55	70	70
	85 °C	125 °C				10 MHz	100 MHz	1 GHz	10 GHz
CAP. (pF)	WORKING VOLTAGE DC (V)		CURRENT dc (A)	I.R. MIN. @ 100 (VDC.)	DWV	MINIMUM NO LOAD INSERTION LOSS (dB) AT 25°C PER MIL-STD -220			

REVISION RECORD		0	DRDN TO COMP FMT & DIM. .562 WAS "A" & NOTE 1 REVISED. ADDED SIL PLAT (2) PLCS. S.M. 06-08-99		
19990607-3-01		5			
PUT INTO STD. FORMAT. S.M. 05-06-04		6			
20040506-1-01		7			
ADDED NOTES 1-3. S.M. 08-02-05		8			
20050719-2-02		9			
NOTE 1 CORRECTED P/N. S.M. 02-13-06		10			
20060210-2-01					
DWV WAS 1400. S.M. 04-19-06					
20060417-2-02					
DWV WAS 1200VAC/2400VDC. S.M. 12-05-06-06					
20061205-1-01					
<div>TUSONIX TUCSON, ARIZONA</div>		TOLERANCES unless otherwise specified 2 PLC. DECIMAL ±  3 PLC. DECIMAL ± .031 [0.79] ANGLES ± 		Title <div>EMI LOW PASS FILTER</div>	
		Drawn S.M. 06-08-99		Scale 2 X	
		Approved E.F. 06-08-99			
		A	4206-001		