

Excellent Integrated System Limited

Stocking Distributor

Click to view price, real time Inventory, Delivery & Lifecycle Information:

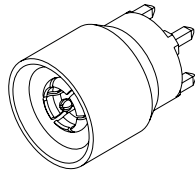
[Amphenol RE](#)
[920-263P-51P](#)

For any questions, you can email us directly:

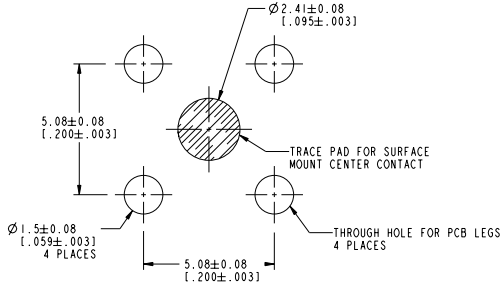
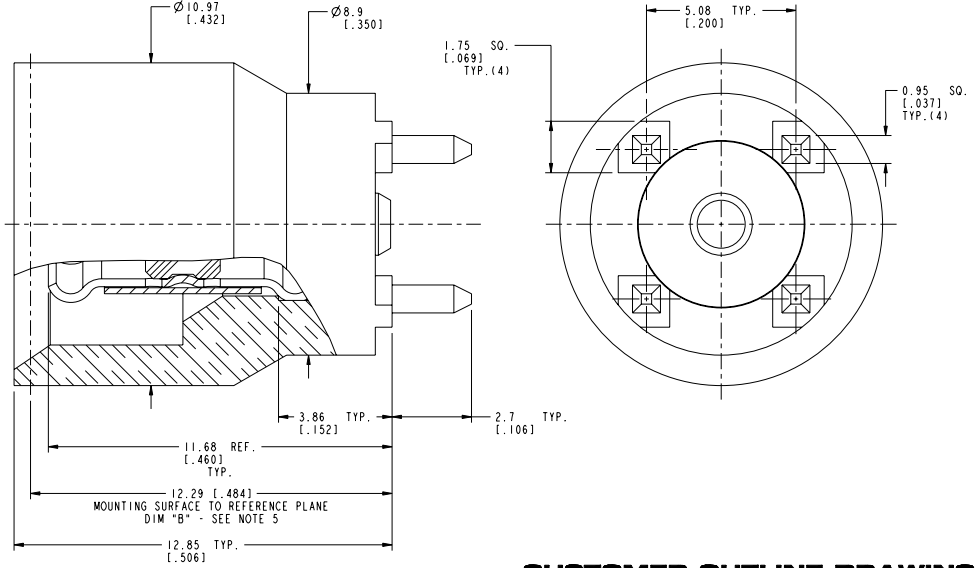
sales@integrated-circuit.com

NOTES:

- MATERIALS AND FINISHES:**
 BODY: BRASS, GOLD PLATING
 CONTACT: BERYLLIUM COPPER, GOLD PLATING
 BULLET BODY - BERYLLIUM COPPER, GOLD PLATING
 BULLET CONTACT - BERYLLIUM COPPER, GOLD PLATING
 SLEEVE - BERYLLIUM COPPER, GOLD PLATING
 INSULATOR: PTFE
- PHYSICAL:**
 A. OPERATING TEMPERATURE: -65°C to +165°C
 B. DURABILITY: 100 MATING CYCLES MINIMUM
 C. INTERFACE: PROPRIETARY AFI INTERFACE
- ELECTRICAL:**
 A. IMPEDANCE: 50 OHMS, NOMINAL
 B. FREQUENCY RANGE: 0 TO 6 GHz
 C. VSWR: $1.10 + 0.06 \times F$ (GHz) MAX, FROM 0 TO 3 GHz
 $0.56 + 0.24 \times F$ (GHz) MAX, FROM 3 TO 6 GHz
 D. SEE 349-50861 FOR RECOMMENDED LAUNCH
- PACKAGING:**
 A. SINGLE PACK IN BAG.
 B. MARK BAG OR TAG: AMPHENOL RF
 920-263P-51P
 DATE CODE (YYWW)
- ADD DIM "B" FROM PLUG AND DIM "A" FROM JACK OF TWO MATING CONNECTORS TO FIND THE NOMINAL BOARD-TO-BOARD SPACING. AXIAL FLOAT IS ± 0.50 [0.020"] RADIAL FLOAT IS ± 0.38 [0.015"]



SCALE 3.000



SUGGESTED PCB FOOTPRINT

CUSTOMER OUTLINE DRAWING
 ALL OTHER SHEETS ARE FOR INTERNAL USE ONLY

UNLESS OTHERWISE SPECIFIED, DIMENSIONS ARE IN METRIC AND TOLERANCES ARE: $\lt; 0.5\text{mm}$ $0.5 - 6\text{mm}$ $6 - 30\text{mm}$ $30 - 120\text{mm}$ ANGLES $\pm 0.05\text{mm}$ $\pm 0.1\text{mm}$ $\pm 0.2\text{mm}$ $\pm 0.3\text{mm}$ $\pm 1^\circ$ NOTICE - These drawings, specifications, or other data (1) are, and remain the property of Amphenol Corp. (2) must be returned upon request; and (3) are confidential and not to be disclosed to any person other than those to whom they are given by Amphenol Corp. The furnishing of these drawings, specifications, or other data by Amphenol Corp., or to any other person for any purpose is not to be regarded by implication or otherwise in any manner licensing, granting rights to permitting such holder or any other person to manufacture, use or sell any product, process or design, patented or otherwise, that may in any way be related to or disclosed by said drawings, specifications, or other data.	MATERIAL	DRAWN	DATE	TITLE	Amphenol RF	
	SEE NOTES	RAJAVIJAYAN S	05-Feb-13			AFI STR PLUG PCB MOUNT
	REFERENCE	ENGINEER	DATE	SCALE: 8.0:1.0	SHEET 2 OF 2	DRAWING NO. 920-263P-51P
	EAR #	T. SMITH	05-Feb-13			DWG SIZE B
CONFIGURATION LEVEL:	APPROVED	DATE			PART NO. 920-263P-51P	
FINISH	S. HSIEH	06-Aug-13				
	CAD FILE					