

Excellent Integrated System Limited

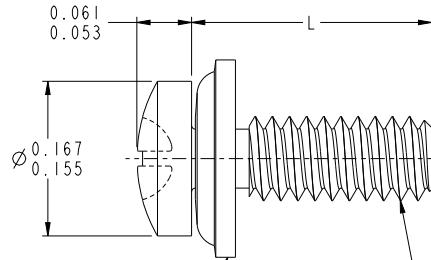
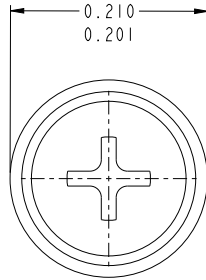
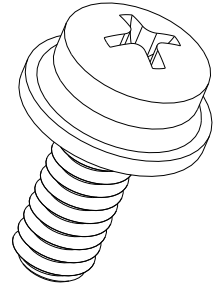
Stocking Distributor

Click to view price, real time Inventory, Delivery & Lifecycle Information:

[FCI](#)
[10091790-002LF](#)

For any questions, you can email us directly:
sales@integrated-circuit.com

PART NUMBER	"L" DIM
10091790-001LF	.250" ^{+.000} -.020
10091790-002LF	.375" ^{+.000} -.020
10091790-003LF	.500" ^{+.000} -.020
10091790-004LF	.625" ^{+.000} -.020



SQUARE CONE LOCK WASHER

2-56 UNC-2A THREAD

NOTES:

- MATERIAL: SCREW: 18-8 STAINLESS STEEL PER ASTM F593
WASHER: 410 STAINLESS STEEL
- DRIVE SIZE: #1 PHILLIPS

spec ref	-	dr	Jim Swain	20100126	projection	INCH	size	A3	scale	10:1		
tolerance std	ASME Y14.5	eng	Jim Swain	201105219			ecn no	-	rel level	Released		
TOLERANCES UNLESS OTHERWISE SPECIFIED		chr	-	201105219			product family	-	rel level	Released		
surface	linear	0.X	±-		FCI www.fci.com	TITLE SCREW, SEMS, PAN-HEAD, PHILLIPS, #2-56 THREADED	ENG NO 10091790	rev A	ASME Y14.5 angular 0° ±-°			
		0.XX	±-						cat. no.	SEE P/N TABLE	Product - Customer Drw	sheet 1 of 1
		0.XXX	±-									

Copyright © FCI.