

Excellent Integrated System Limited

Stocking Distributor

Click to view price, real time Inventory, Delivery & Lifecycle Information:

[FCI](#)
[10063141-101LF](#)

For any questions, you can email us directly:
sales@integrated-circuit.com

A

B

C

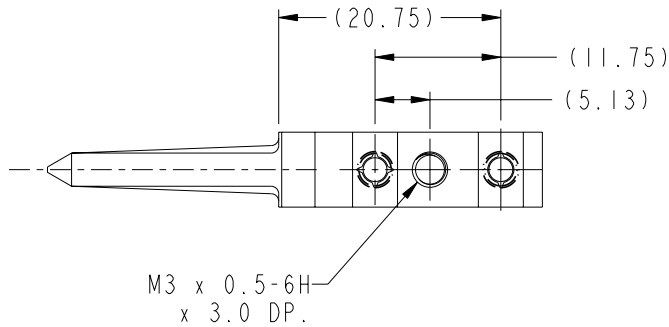
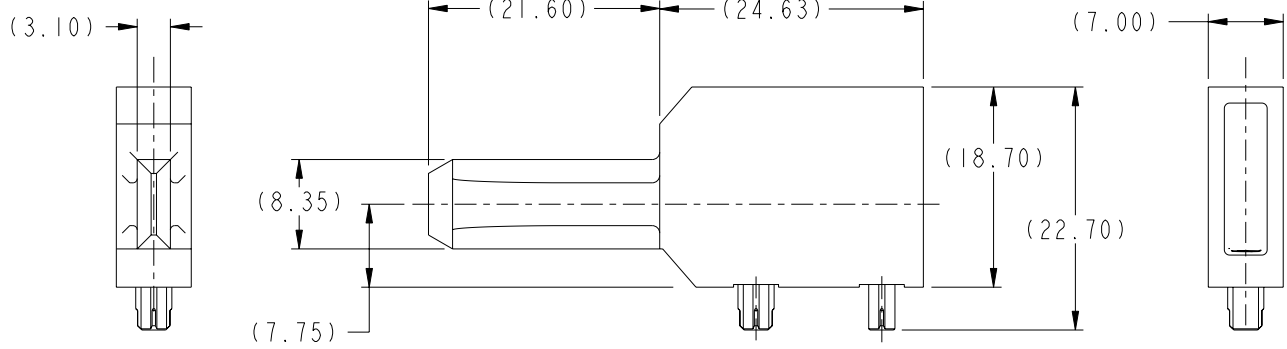
D

A

B

C

D



Copyright FCI.

www.fciconnect.com				surface 3.2 ASME Y14.5	tolerance std ASME Y14.5	projection ASME Y14.5	mm
TOLERANCES UNLESS OTHERWISE SPECIFIED				ANGULAR	LINEAR	size A4	Scale 2:1
Dr	C. H. TAN	2006-03-11		0.X	±0.3		
Eng	C. H. TAN	2006-03-11		0.XX	±0.10		
Chr	C. H. TAN	2006-12-01	0° ±2°	0.XXX	±0.050	ECN	NEW
Appr	JOEY NG	2006-12-01	Product family	AirMax ACCESSORIES		Spec ref	
				7.2mm R/A GUIDE PIN		diag no	10063141
				4/5 Pr. INVERSE CO-PLANAR		Rev.	A
catalog no				CUSTOMER		sheet 1 of 2	

REV F - 2006-04-11

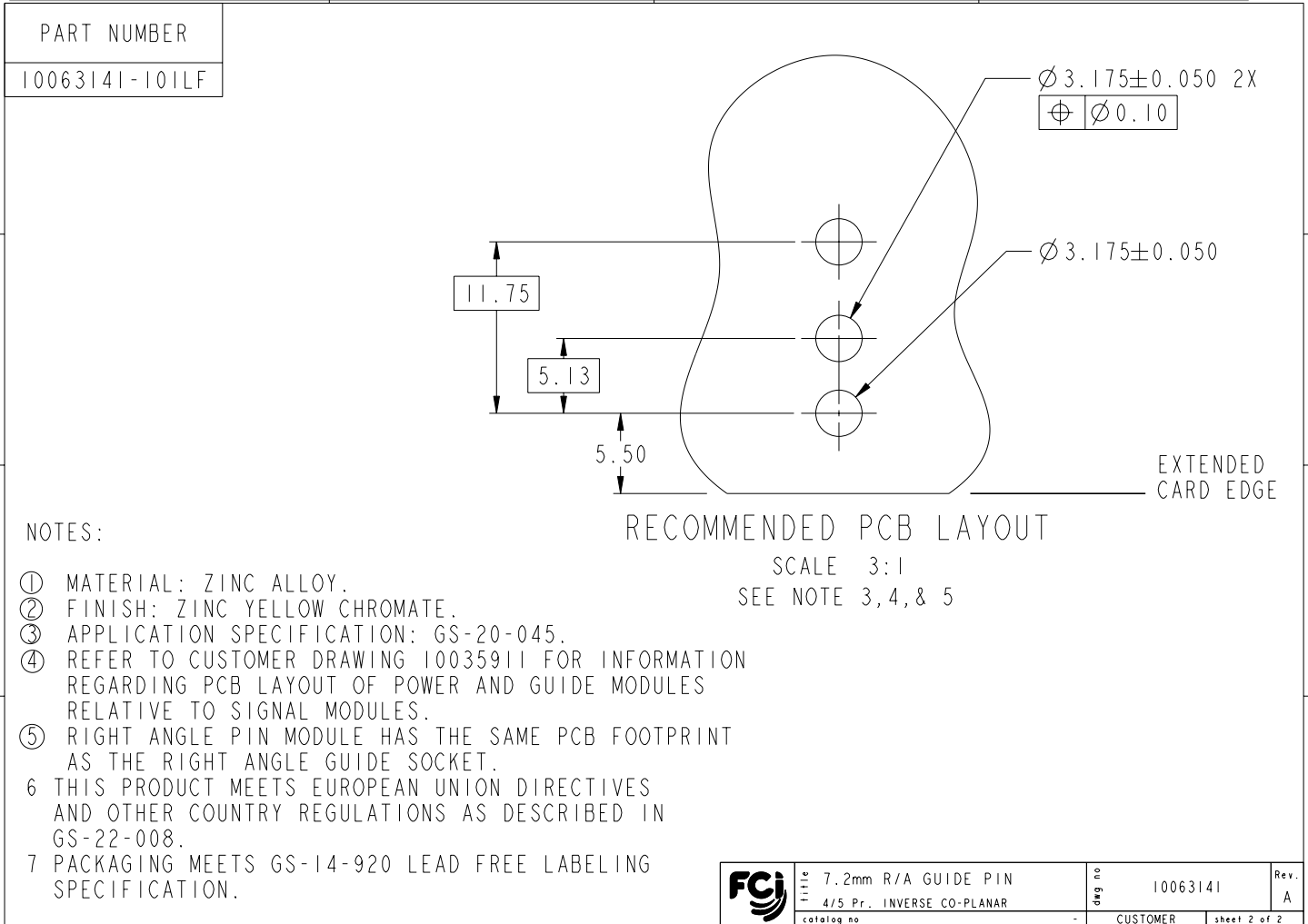
1

2

PDM: Rev:A

STATUS: Released

4 Printed: Dec 01, 2010



Copyright FCI.

REV F - 2004-04-17

PDM: Rev:A

STATUS: **Released**

⁴Printed: Dec 01, 2010