

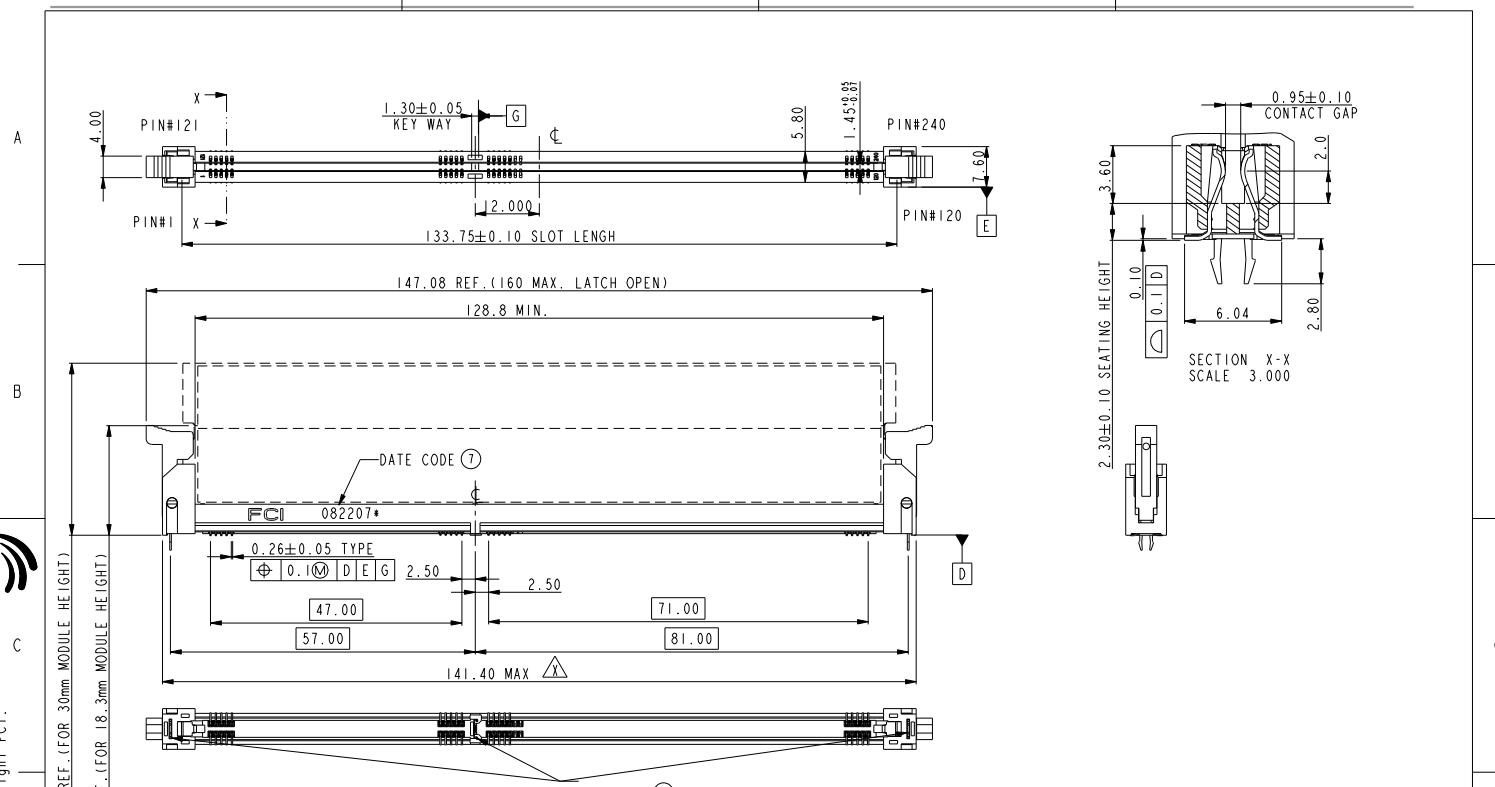
Excellent Integrated System Limited

Stocking Distributor

Click to view price, real time Inventory, Delivery & Lifecycle Information:

[FCI](#)
[10079248-10003](#)

For any questions, you can email us directly:
sales@integrated-circuit.com



SEE NOTE (1)

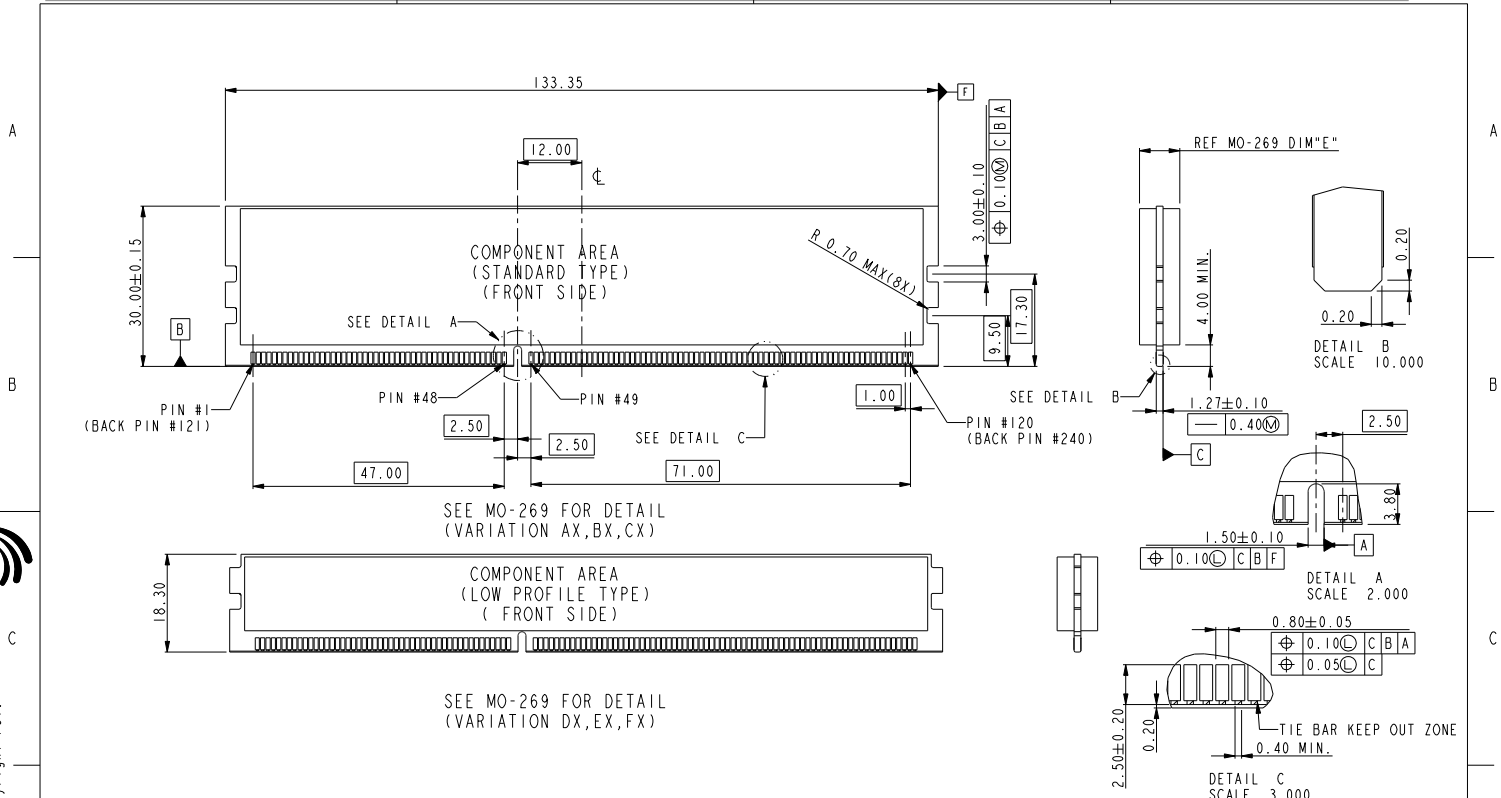


Copyright FCI.

32.20 REF. (FOR 30mm MODULE HEIGHT)
20.50 REF. (FOR 18.3mm MODULE HEIGHT)

spec ref	*	dr	Rick Bian	2010/07/03	projection	mm	size	A4	scale	0.500				
tolerance std	ASME Y14.5	TOLERANCES UNLESS OTHERWISE SPECIFIED	eng	Eric Jiang	2015/06/17			ecn no	ELX-DG-21184-1					
surface	ASME Y14.5	linear	chr	Nickor Zuo	2015/06/24				rel level	Released				
		angular	appr	Pei-Ming Zheng	2015/06/24	product family								
		0.X ±0.30				title SMT DDRIII SOCKET ASS'Y DDRIII,240P SOCKET(FOR RDIMM MODULE)	dwg no 10079248	rev X						
		0.XX ±0.15							www.fci.com		cat. no.	*	Product - Customer Drw	sheet 1 of 5
		0.XXX ±0.05												
		0° ±2°												

Part File: REV C - 2009-08-09



Copyright FCI.

spec ref	*	dr	Rick Bian	2010/07/03	projection	mm	size	A4	scale	0.500
tolerance std	ASME Y14.5	eng	Eric Jiang	2015/06/17	product family	← →	ecn no	ELX-DG-21184-1		
TOLERANCES UNLESS OTHERWISE SPECIFIED		chr	Nickor Zuo	2015/06/24			rel level	Released		
surface	linear	appr	Pei-Ming Zheng	2015/06/24	title	SMT DDRIII SOCKET ASS'Y	dwg no	10079248		
ASME Y14.5	angular	www.fci.com	cat. no.	*	Product - Customer	Drw	rev	X		
	0.X	±0.30								
	0.XX	±0.15								
	0.XXX	±0.05								
	0°	±2°								

FILE FILE - REV C - 2009-06-09

1

2

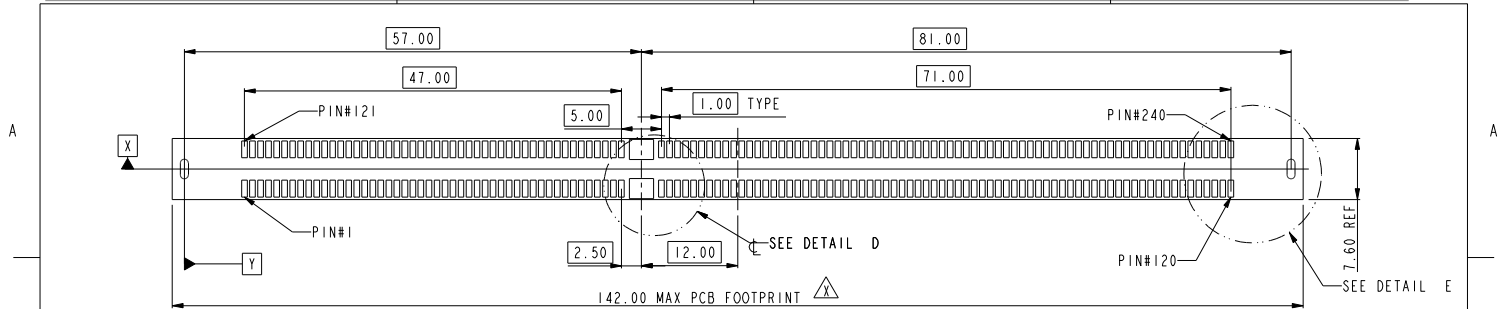
3

PDS: Rev :X

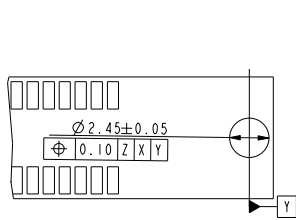
STATUS:Released

Printed: Jun 25, 2015

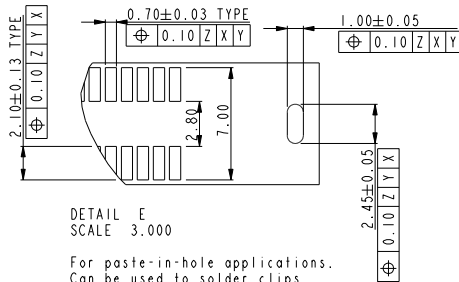
sheet 2 of 5



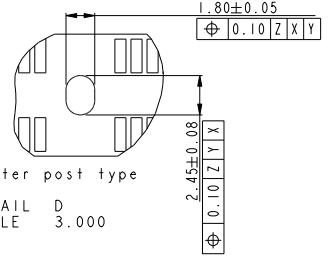
RECOMMEND CIRCUIT BOARD LAYOUT



DETAIL E
SCALE 3.000
Standard hole for hold-down clips



DETAIL E
SCALE 3.000
For paste-in-hole applications.
Can be used to solder clips during reflow operation.



Center post type
DETAIL D
SCALE 3.000

spec ref	*	dr	Rick Bian	2010/07/03	projection	mm	size	A4	scale	0.500	
tolerance std	ASME Y14.5	eng	Eric Jiang	2015/06/17			ecn no	ELX-DG-21184-1	rel level	Released	
TOLERANCES UNLESS OTHERWISE SPECIFIED		chr	Nickor Zuo	2015/06/24							product family
surface	linear	appr	Pei-Ming Zheng	2015/06/24			title	SMT DDRIII SOCKET ASS'Y		dwg no 10079248	rev X
ASME Y14.5	angular	www.fci.com		cat. no.	*	Product - Customer Drw	sheet 3 of 5				
	0.X										
	0.XX										
	0.XXX										
	0°										

FILE FILE - REV C - 2009-06-09

1

2

3

PDS: Rev :X

STATUS:Released

Printed: Jun 25, 2015



Copyright FCI.

MYLAR TYPE	DIM X	DIM Y
MYLAR 1	30.0	49.38
MYLAR 2	90.0	19.38
MYLAR 3	30.0	30.0
MYLAR 4	30.0	68.8

A



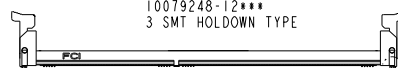
SCALE 0.500



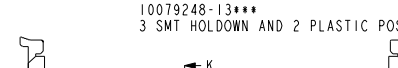
SCALE 0.500



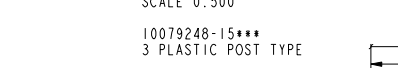
SCALE 0.500



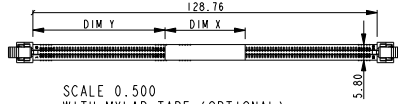
SCALE 0.500



SCALE 0.500



SCALE 0.500



SCALE 0.500
WITH MYLAR TAPE (OPTIONAL)

STYLE : MECHANICAL KEYING

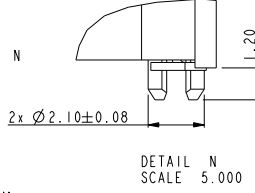
1 : 1.5 VOLT. W/ CENTER KEY

HOLD DOWN TYPE

- 0 : CENTER HOLD DOWN, FORKLOCK AT BOTH END
- 1 : 3 FORKLOCK TYPE
- 2 : 3 SMT HOLDDOWN TYPE
- 3 : 3 SMT HOLDDOWN AND 2 PLASTIC POST
- 5 : 3 PLASTIC POST TYPE

PACKAGE AND MYLAR OPTION

- 0: SOFT TRAY WITHOUT MYLAR (OBSOLETE)
- 1: HARD TRAY WITH MYLAR 1
- 2: HARD TRAY WITHOUT MYLAR
- 3: SOFT TRAY WITH MYLAR (OBSOLETE)
- 4: SPECIAL HARD TRAY WITH MYLAR 1
- 5: SPECIAL HARD TRAY WITHOUT MYLAR
- 6: HARD TRAY WITH MYLAR 2
- 7: HARD TRAY WITH MYLAR 3
- 8: HARD TRAY WITH MYLAR 4
- 9: SMALLER HARD TRAY WITHOUT MYLAR



DETAIL N
SCALE 5.000

PLATING

CODE	CONTACT	SOLDERTAIL	UNDERPLATE	NOTE
1	10u" (0.25um) MIN. GOLD			
2	15u" (0.38um) MIN. GOLD			CONTACT NON-LUBRICANT
3	30u" (0.76um) MIN. GOLD			
4	GOLD FLASH			
5	10u" (0.25um) MIN. GOLD	100u" (2.54um) MIN. TIN-LEAD	50u" (1.27um) MIN. NICKEL OVERALL	CONTACT LUBRICATED
6	15u" (0.38um) MIN. GOLD			
7	30u" (0.76um) MIN. GOLD			
8	GOLD FLASH			
3S	5u" (0.125um) MIN. GOLD			CONTACT LUBRICATED WITH HIGH PERFORMANCE POLY-A-OLEFIN LUBRICANT
1LF	10u" (0.25um) MIN. GOLD			
2LF	15u" (0.38um) MIN. GOLD			CONTACT NON-LUBRICANT
3LF	30u" (0.76um) MIN. GOLD			
4LF	GOLD FLASH			
5LF	10u" (0.25um) MIN. GOLD	100u" (2.54um) MIN. 100% MATT TIN	50u" (1.27um) MIN. NICKEL OVERALL	CONTACT LUBRICATED
6LF	15u" (0.38um) MIN. GOLD			
7LF	30u" (0.76um) MIN. GOLD			
8LF	GOLD FLASH			
3SLF	5u" (0.125um) MIN. GOLD			CONTACT LUBRICATED WITH HIGH PERFORMANCE POLY-A-OLEFIN LUBRICANT
7SLF	30u" (0.76um) MIN. GOLD			

COLOR OF HOUSING AND EJECTOR

- 0 : BLACK HOUSING + IVORY EJECTOR
- 1 : BLACK HOUSING + BLACK EJECTOR
- 2 : BLACK HOUSING + BLUE(661C) EJECTOR
- 3 : BLACK HOUSING + YELLOW(123C) EJECTOR

Copyright FCI.



D

spec ref	*	dr	Rick Bian	2010/07/03	projection	mm	size	A4	scale	0.500
tolerance std	ASME Y14.5	eng	Eric Jiang	2015/06/17	product family	← →	ecn no	ELX-DG-21184-1	rel level	Released
TOLERANCES UNLESS OTHERWISE SPECIFIED		chr	Nickor Zuo	2015/06/24						
surface	linear	appr	Pei-Ming Zheng	2015/06/24	SMT DDRIII SOCKET ASS'Y		dwg no	10079248	rev	X
ASME Y14.5	angular	www.fci.com		cat. no.	DDRIII, 240P SOCKET (FOR RDIMM MODULE)					
				Product - Customer Drw		sheet 4 of 5				

FILE FILE REV C - 2009-06-09

1

2

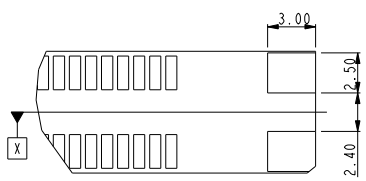
3

PDS: Rev :X

STATUS:Released

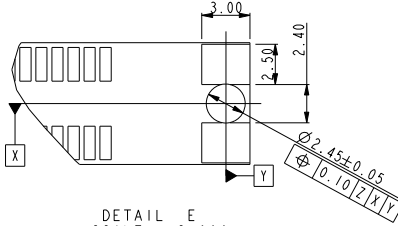
Printed: Jun 25, 2015

A



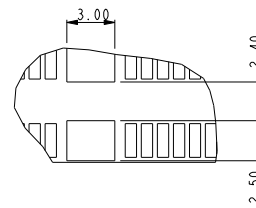
DETAIL E
SCALE 3.000

For smt holdown type



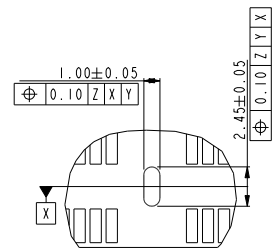
DETAIL E
SCALE 3.000

For 3smt holddown + 2plastic post type



Center smt holddown type

DETAIL D
SCALE 3.000



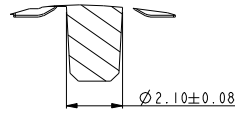
Center forklock type

DETAIL D
SCALE 3.000

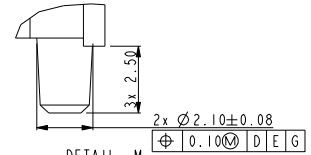
B

NOTES:

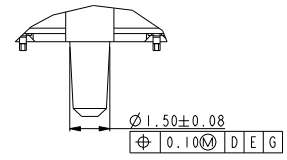
- MATERIAL:
HOUSING: HIGH PERFORMANCE RESINS, GLASS FILLED UL94V-0 RATED.
EJECTOR: HIGH PERFORMANCE RESINS, GLASS FILLED UL94V-0 RATED.
TERMINAL: HIGH PERFORMANCE COPPER ALLOY
METAL CLIP: COPPER ALLOY.
- FCI LOGO TO BE APPROXIMATELY LOCATED AS SHOWN ON PRINT.
- PRODUCT SPECIFICATION: GS-12-486.
- PACKAGING SPECIFICATION: GS-14-899.
- RECOMMENDED STENCIL THICKNESS NO LESS THAN 0.15 mm.
- FOR OPTIMUM PERFORMANCE, THE TIE BAR IS TO BE ON AN INTERNAL LAYER SO THAT THE REMNANT CANNOT CAUSE CONTACT DAMAGE.
- THE DATE CODE IS SHOWN "MMDDYY*". "*" MEANS PRODUCTION LINE.
- THIS PRODUCT MEETS EUROPEAN UNION DIRECTIVES AND OTHER COUNTRY REGULATIONS AS DESCRIBED IN GS-22-008.
- THE HOUSING WILL WITH STAND EXPOSURE TO 260°C PEAK TEMPERATURE FOR 10 SECONDS IN AN IR REFLOW SOLDERING APPLICATION.
- PRODUCT APPLICATION SPEC GS-20-089.
- THE HOLDOWN TYPES ARE OPTION FOR HOLDOWN OR FORKLOCK.
- A Δ SYMBOL WILL BE NEXT TO ANY DIMENSION, VIEW, OR NOTE WHICH HAS BEEN MODIFIED WITH THE CURRENT DRAWING REVISION.



SECTION K-K
SCALE 5.000



DETAIL M
SCALE 5.000



DETAIL J
SCALE 5.000

Copyright FCI.

D

spec ref	*	dr	Rick Bian	2010/07/03	projection	mm	size	A4	scale	0.500
tolerance std	ASME Y14.5	eng	Eric Jiang	2015/06/17			ecn no	ELX-DG-21184-1	rel level	Released
TOLERANCES UNLESS OTHERWISE SPECIFIED		chr	Nickor Zuo	2015/06/24						
surface	linear	appr	Pei-Ming Zheng	2015/06/24	SMT DDRIII SOCKET ASS'Y		dwg no	10079248	rev	X
ASME Y14.5	angular	www.fci.com		cat. no.	*	Product - Customer Drw				

FILE FILE - REV C - 2009-08-09

D

A

B

C

