

Excellent Integrated System Limited

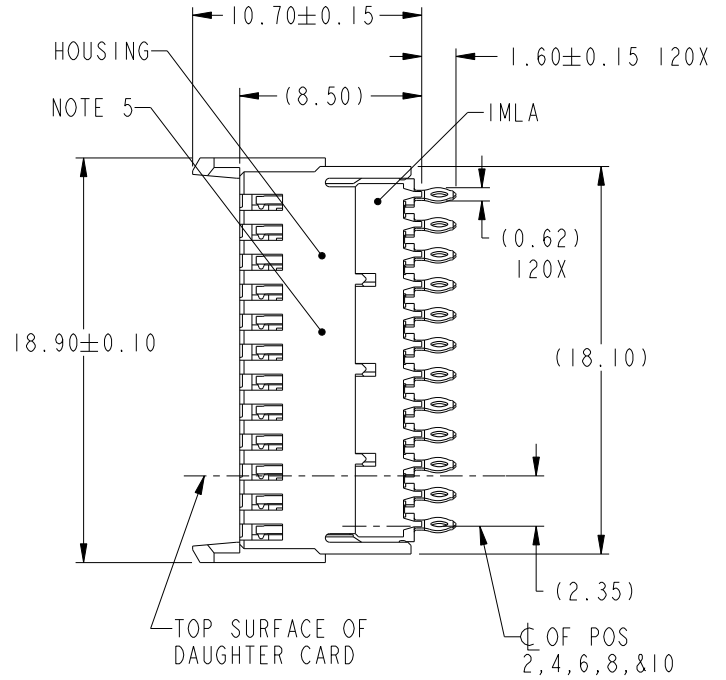
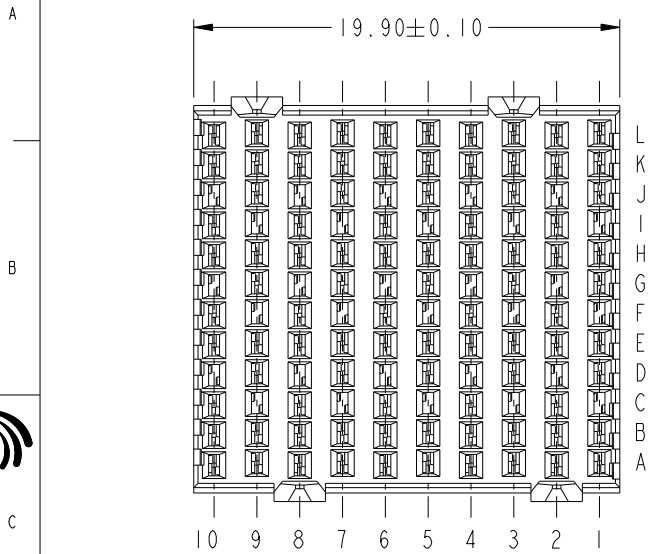
Stocking Distributor

Click to view price, real time Inventory, Delivery & Lifecycle Information:

[FCI](#)
[10084581-101LF](#)

For any questions, you can email us directly:
sales@integrated-circuit.com

PRODUCT NUMBER
SEE TABLE, SHEET 4



Copyright FCI.

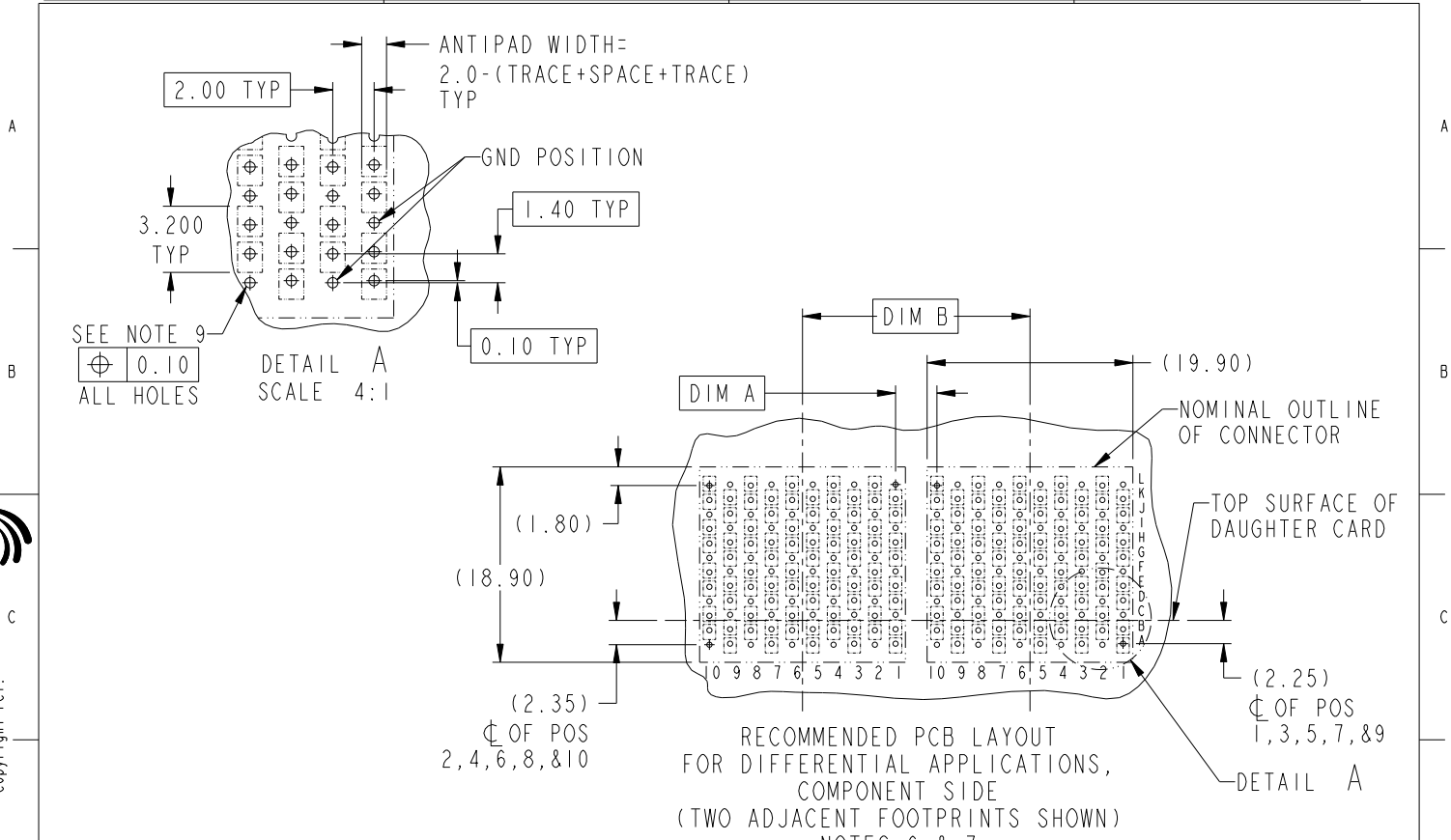
www.fciconnect.com				surface - ASME Y14.5	tolerance - ASME Y14.5	std -	projection	MM
				TOLERANCES UNLESS OTHERWISE SPECIFIED				
Dr	L.S. NGWE	2008-06-03	ANGULAR	LINEAR	0.X	±	size	A4
Eng	C.H. TAN	2008-06-13	0°	±°	0.XX	±	ECN	***
Chr	C.H. TAN	2008-06-13	Product family	AirMax VS	Spec ref			
Appr	JOEY NG	2008-06-13	Title		AirMax VS VERT RECPT ASSY		dag no	10084581
			Description		PRESS-FIT, 120 POSITION, 20mm		Rev.	B
			catalog no		CUSTOMER		sheet 1 of 4	

REV F - 2008-06-13

PDM: Rev:B

STATUS: Released

4 Printed: Dec 01, 2010



ADJACENT HEADER WIDTHS	DIM A	DIM B
20MM/20MM	2.00	20.00
20MM/22MM	3.00	21.00
22MM/22MM	4.00	22.00

FCI	title	AirMax VS VERT RECPT ASSY	deg no	10084581	Rev.
	catalog no	PRESS-FIT, 120 POSITION, 20mm		CUSTOMER	sheet 2 of 4

REV F - 2006-06-13

1

2

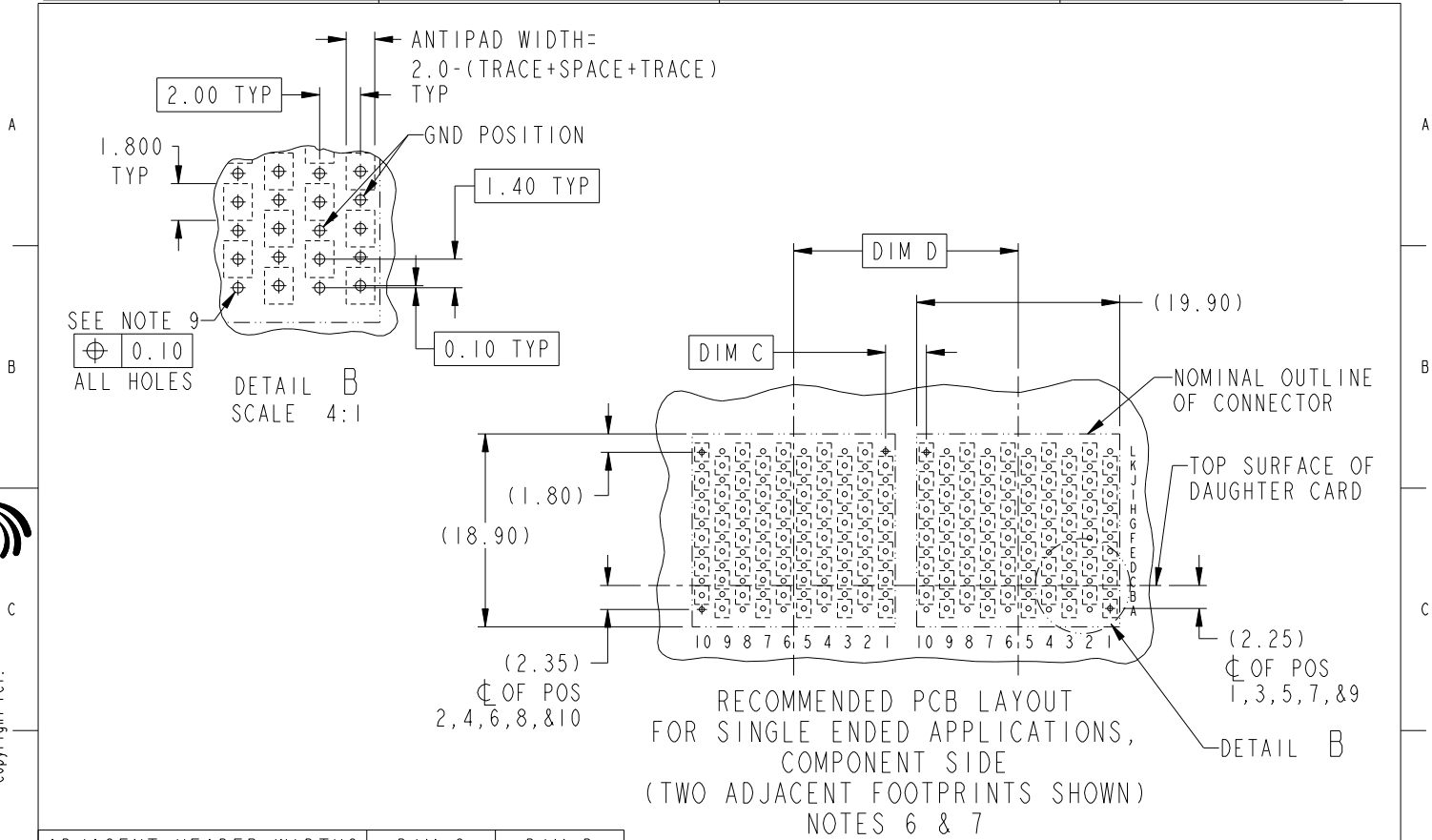
PDM: Rev:B

STATUS: **Released**

⁴Printed: Dec 01, 2010



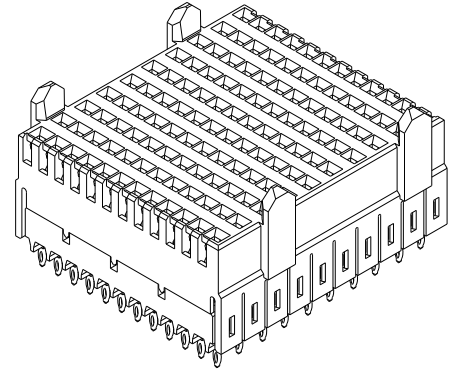
Copyright FCI.



ADJACENT HEADER WIDTHS	DIM C	DIM D
20MM/20MM	2.00	20.00
20MM/22MM	3.00	21.00
22MM/22MM	4.00	22.00

	title	AirMax VS VERT RECPT ASSY	desig no	10084581	Rev.	B
	catalog no	PRESS-FIT, 120 POSITION, 20mm	CUSTOMER	sheet 3 of 4		

PART NUMBER	PRESS-FIT TAIL PLATING TYPE
10084581-101LF	TIN OVER NICKEL (LEAD FREE)



NOTES:

1. CONNECTOR MATERIALS:
HOUSING: HIGH TEMP THERMOPLASTIC, NATURAL, UL94V-0
IMLA PLASTIC: HIGH TEMP THERMOPLASTIC, BLACK, UL94V-0
CONTACT: COPPER ALLOY
2. CONTACT PLATING:
SEPARABLE INTERFACE:
PERFORMANCE-BASED PLATING, QUALIFIED TO MEET THE REQUIREMENTS
OF FCI PRODUCT SPECIFICATION GS-12-239, INCLUDING TELCORDIA
GR-1217-CORE (NOVEMBER 1995) CENTRAL OFFICE.
PRESS-FIT TAILS: SEE TABLE
3. PRODUCT SPECIFICATION: GS-12-239
4. APPLICATION SPECIFICATION: GS-20-035
5. PRODUCT MARKING, (PART NUMBER & LOT CODE),
ON THIS SURFACE
6. REFER TO CUSTOMER DRAWING 10035911 FOR INFORMATION
REGARDING PCB LAYOUT OF POWER AND GUIDE MODULES
RELATIVE TO SIGNAL MODULES
7. POSITION F OF ODD NUMBERED COLUMNS AND POSITION G
OF EVEN NUMBERED COLUMNS CORRESPOND TO EARLY MATE
HEADER PINS
8. THERE IS NO GROUND BUSSING WITHIN THE CONNECTOR SYSTEM
9. SEE CUSTOMER DRAWING 10045979 FOR INFORMATION ON PCB HOLE
DIAMETER AND PLATING OPTIONS
10. THIS PRODUCT MEETS EUROPEAN UNION DIRECTIVES AND OTHER
COUNTRY REGULATIONS AS DESCRIBED IN GS-22-008
11. THE HOUSING WILL WITHSTAND EXPOSURE
TO 260°C PEAK TEMPERATURE FOR
40 SECONDS IN A CONVECTION, INFRA-RED
OR VAPOR PHASE REFLOW OVEN
12. PACKAGING MEETS GS-14-920 LEAD FREE
LABELING SPECIFICATION



Copyright FCI.

REV F - 2006-06-17

FCI	title	AirMax VS VERT RECPT ASSY	desig no	10084581	Rev.	B
	catalog no	PRESS-FIT, 120 POSITION, 20mm	-	CUSTOMER	sheet 4 of 4	

PDM: Rev:B

STATUS: **Released**

4 Printed: Dec 01, 2010