

Excellent Integrated System Limited

Stocking Distributor

Click to view price, real time Inventory, Delivery & Lifecycle Information:

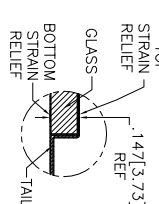
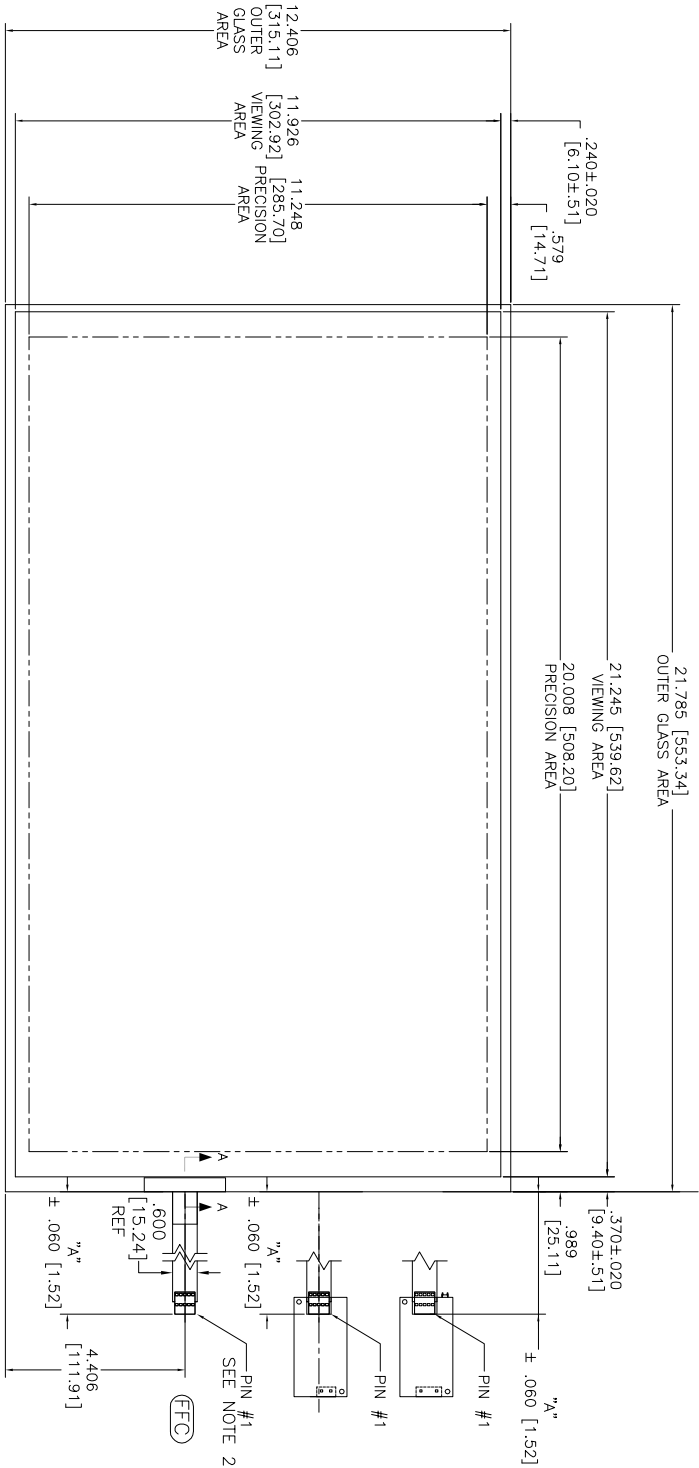
[3M](#)
[98000342158](#)

For any questions, you can email us directly:

sales@integrated-circuit.com

OCA DIAGONAL: 25.07 [636.77]
 VA DIAGONAL: 24.36 [618.83]
 PA DIAGONAL: 22.95 [583.00]

TOP LEVEL NUMBER	US NUMBER	TYPE	DIM "A" (TOTAL GLASS TO CONNECTOR)	A/G FINISH	PROD SPEC
17-9011-226	98-0003-3375-1	USB R	8.00" [203.20]	AG500	23655
N/A	98-0003-3794-3	SER	8.00" [203.20]	WC100	34523
N/A	98-0003-3875-0	SER	8.00" [203.20]	AG500	23655
N/A	98-0003-3876-8	FFC	8.00" [203.20]	AG500	23655
N/A	98-0003-4215-8	USB R	8.00" [203.20]	WC100	34523
N/A	98-1100-0092-8	FFC	8.00" [203.20]	WC100	34523



(SER) EXII-7720SC
 98-0003-2217-6
 SERIAL CONTROLLER
 SOLDER SIDE

(USB R)
 EXII-7769UC
 98-0003-2815-7
 USB CONTROLLER
 SOLDER SIDE



NOTES:

1. WEIGHT OF GLASS IN GRAMS: 1.384±10%
2. NICOMATIC HOUSING P/N: 0L05
3. NICOMATIC RECEPTACLES (PINS) MATTE TIN PLATED P/N: 14106-12
4. HOUSING ORIENTED WITH LATCH DOWN

PINOUT
1 UL
2 UR
3 SHLD
4 LR
5 LL

UNITS: INCHES [MM]
 TOLERANCES UNLESS SPECIFIED:
 .XX ±.03 [.76]
 .XXX ±.015 [.38]
 ANGLES ±1°

3M TOUCH SYSTEMS
 MEHLEN, VA
 USA

THIS DOCUMENT IS COPYRIGHTED PROPERTY OF THE 3M COMPANY AND MAY NOT BE REPRODUCED OR TRANSMITTED IN ANY FORM OR BY ANY MEANS, ELECTRONIC OR MECHANICAL, INCLUDING PHOTOCOPYING, RECORDING, OR BY ANY INFORMATION STORAGE AND RETRIEVAL SYSTEM, WITHOUT PERMISSION IN WRITING FROM THE 3M COMPANY.

DATE: 6/09
 SIZE: A4
 SHEET: 1 OF 1

REV	DATE	BY	CHK	APP
H	4/13	SB		
G	2/13	SB		
F	9/12	SB		

MARKETING DRAWING
 SCT32NN 24.36" W

REV	DATE	BY	CHK	APP
C	9/12	SB		

DOC NO: TSD-37090