

Excellent Integrated System Limited

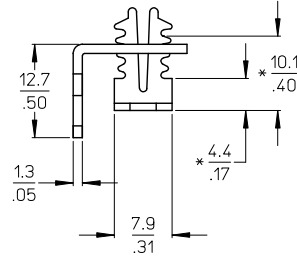
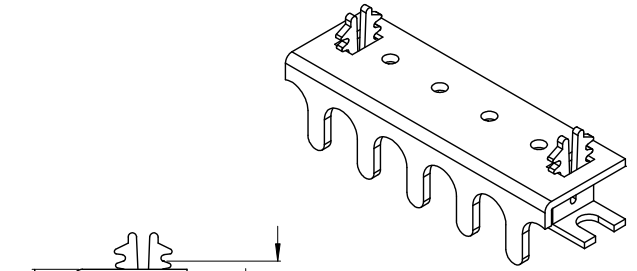
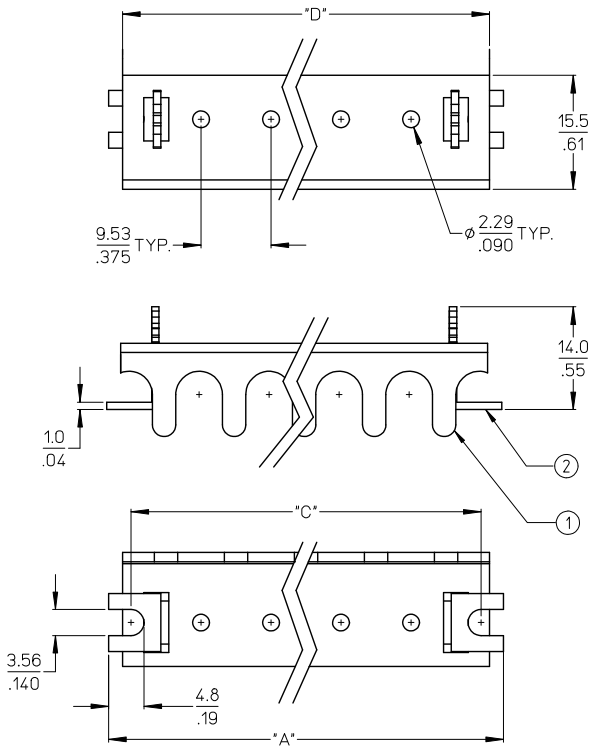
Stocking Distributor

Click to view price, real time Inventory, Delivery & Lifecycle Information:

[Molex Connector Corporation](#)
[0387536706](#)

For any questions, you can email us directly:

sales@integrated-circuit.com



NOTES:

1. MATERIAL: SEE TABLE.
2. FINISHES: SEE TABLE.
3. PRODUCT SPECIFICATION: AS REQUIRED.
4. MATES WITH: 75 SERIES BTS.
5. (*) DIMENSIONS INDICATE MAX. AND MIN. COVER HEIGHT.
6. ROHS COMPLIANT.

| ITEM | QTY. | DESCRIPTION | MATERIAL | FINISH |
|------|------|-------------------|---------------|---------|
| 2 | 2 | COVER CLIPS AS MO | ACETAL | NATURAL |
| 1 | 1 | COVER W-A-R CUTTH | PBT POLYESTER | BLACK |

| | |
|---------------------|------------|
| UPDATE DIM. A & D | 2008/12/18 |
| EC NO: WNA2009-0356 | 2008/01/15 |
| DRAWN: JENCINAS | 2008/01/15 |
| CHKD: CYORK | 2009/07/15 |
| APPR: JMACNEIL | |

| QUALITY SYMBOLS | DESCRIPTION |
|-----------------|-------------|
| $\nabla=0$ | |
| $\nabla=0$ | |

| GENERAL TOLERANCES (UNLESS SPECIFIED) | |
|---------------------------------------|---------|
| mm | INCH |
| 4 PLACES ± .005 | ± .0005 |
| 3 PLACES ± .013 | ± .01 |
| 2 PLACES ± 0.3 | ± .01 |
| 1 PLACE ± .013 | ± .01 |
| ANGULAR ± 2° | |

| DIMENSION STYLE | |
|-----------------|-------|
| MM/IN | SCALE |
| MM/IN | 2:1 |

| SCALE | DESIGN UNITS | THIRD ANGLE PROJECTION |
|-------|--------------|------------------------|
| 2:1 | INCH | THIRD ANGLE PROJECTION |

| | |
|-------------|------------|
| DRAWN BY | DATE |
| JENCINAS | 2008/05/13 |
| CHECKED BY | DATE |
| CYORK | 2008/05/14 |
| APPROVED BY | DATE |
| JMACNEIL | 2008/05/16 |

| | |
|--------------|-------------------------------|
| TITLE | COVER SR BTS KIT, W-A-R CUTTH |
| MATERIAL NO. | SEE CHART |
| DOCUMENT NO. | SD-38753-001 |
| SHEET NO. | 1 OF 2 |

10 9 8 7 6 5 4 3 2 38753

| NO. OF CIRCUITS | DIM. "A" | | DIM. "C" | | DIM. "D" | | KIT MATERIAL |
|-----------------|----------|-------|----------|--------|----------|-------|--------------|
| | mm | in | mm | in | mm | in | |
| 02 | 34.7 | 1.37 | 28.58 | 1.125 | 30.7 | 1.21 | 387536702 |
| 03 | 44.2 | 1.74 | 38.10 | 1.500 | 40.3 | 1.59 | 387536703 |
| 04 | 53.7 | 2.12 | 47.63 | 1.875 | 49.8 | 1.96 | 387536704 |
| 05 | 63.2 | 2.49 | 57.15 | 2.250 | 59.3 | 2.34 | 387536705 |
| 06 | 72.8 | 2.87 | 66.68 | 2.625 | 68.8 | 2.71 | 387536706 |
| 07 | 82.3 | 3.24 | 76.20 | 3.000 | 78.4 | 3.09 | 387536707 |
| 08 | 91.8 | 3.62 | 85.73 | 3.375 | 87.9 | 3.46 | 387536708 |
| 09 | 101.3 | 3.99 | 95.25 | 3.750 | 97.4 | 3.84 | 387536709 |
| 10 | 110.9 | 4.37 | 104.78 | 4.125 | 106.9 | 4.21 | 387536710 |
| 11 | 120.4 | 4.74 | 114.30 | 4.500 | 116.5 | 4.59 | 387536711 |
| 12 | 129.9 | 5.12 | 123.83 | 4.875 | 126.0 | 4.96 | 387536712 |
| 13 | 139.4 | 5.49 | 133.35 | 5.250 | 135.5 | 5.34 | 387536713 |
| 14 | 149.0 | 5.87 | 142.88 | 5.625 | 145.0 | 5.71 | 387536714 |
| 15 | 158.5 | 6.24 | 152.40 | 6.000 | 154.6 | 6.09 | 387536715 |
| 16 | 168.0 | 6.62 | 161.93 | 6.375 | 164.1 | 6.46 | 387536716 |
| 17 | 177.5 | 6.99 | 171.45 | 6.750 | 173.6 | 6.84 | 387536717 |
| 18 | 187.1 | 7.37 | 180.98 | 7.125 | 183.1 | 7.21 | 387536718 |
| 19 | 196.6 | 7.74 | 190.50 | 7.500 | 192.7 | 7.59 | 387536719 |
| 20 | 206.1 | 8.12 | 200.03 | 7.875 | 202.2 | 7.96 | 387536720 |
| 21 | 215.6 | 8.49 | 209.55 | 8.250 | 211.7 | 8.34 | 387536721 |
| 22 | 225.2 | 8.87 | 219.08 | 8.625 | 221.2 | 8.71 | 387536722 |
| 23 | 234.7 | 9.24 | 228.60 | 9.000 | 230.8 | 9.09 | 387536723 |
| 24 | 244.2 | 9.62 | 238.13 | 9.375 | 240.3 | 9.46 | 387536724 |
| 25 | 253.7 | 9.99 | 247.65 | 9.750 | 249.8 | 9.84 | 387536725 |
| 26 | 263.3 | 10.37 | 257.18 | 10.125 | 259.3 | 10.21 | 387536726 |

| | | | | | | | |
|---|---|--|---------------------------|------------------------------------|---------------------|---|----------------------------------|
| SEE SHEET ONE EC. NO: WNA2009-0356 DRAWN: JENCINAS 2008/12/18 CHECKED: CYORK 2009/01/15 APPR: JMACNEIL 2009/01/15 DESCRIPTION: | QUALITY SYMBOLS | GENERAL TOLERANCES (UNLESS SPECIFIED) mm INCH 4 PLACES ±.005 ±.005 3 PLACES ±.005 ±.005 2 PLACES ±.013 ±.01 1 PLACE ±.03 ±.03 ANGULAR ± 2° | DIMENSION STYLE | SCALE | DESIGN UNITS | THIRD ANGLE PROJECTION | |
| | ▽=0 ▽=0 | | MM/IN | 2:1 | INCH | DRAWN BY: JENCINAS DATE: 2008/05/13 CHECKED BY: CYORK DATE: 2008/05/14 APPROVED BY: JMACNEIL DATE: 2008/05/16 | COVER SR BTS KIT, W-A-R CUTTH |
| | DRAFT WHERE APPLICABLE MUST REMAIN WITHIN DIMENSIONS | | MATERIAL NO. SEE CHART | MOLEX INCORPORATED SD-38753-001 | SHEET NO. 2 OF 2 | | |
| | THIS DRAWING CONTAINS INFORMATION THAT IS PROPRIETARY TO MOLEX INCORPORATED AND SHOULD NOT BE USED WITHOUT WRITTEN PERMISSION | | | | | | |

9 8 7 6 5 4 3 2 1