

Excellent Integrated System Limited

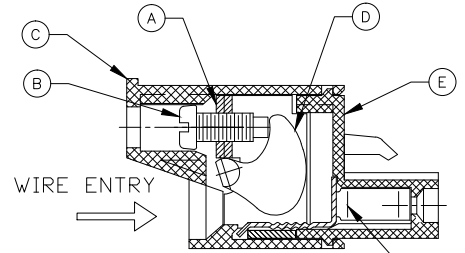
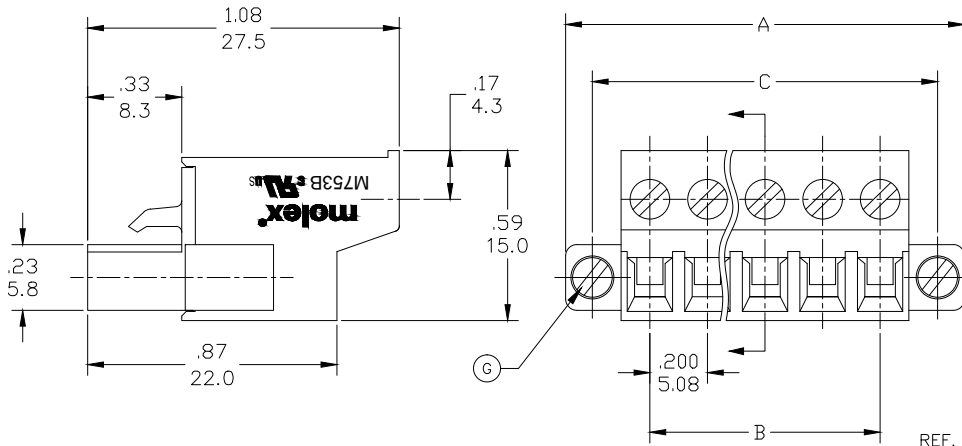
Stocking Distributor

Click to view price, real time Inventory, Delivery & Lifecycle Information:

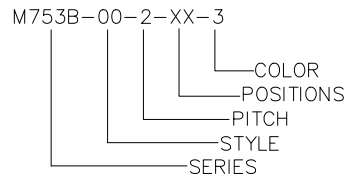
[Molex Connector Corporation](#)
[0395341002](#)

For any questions, you can email us directly:

sales@integrated-circuit.com



REF. LAST 2 DIGITS OF PART NUMBER EQUALS CIRCUIT COUNT



SPECIFICATIONS:

1. MATERIAL:
 - A. BLOCK: STEEL ZINC PLATED
 - B. SCREW: M2.5, STEEL ZINC PLATED
 - C. BODY: PA66 UL94 V-0
 - D. CAM: STAINLESS STEEL
 - E. COVER: PA66 UL94 V-0
 - F. TERMINAL: BRASS TIN PLATED
 - G. MOUNTING SCREW: M2.5, STEEL ZINC PLATED

2. WIRE SIZE: 30 TO 12AWG
3. RATING: 15A AT 51-150V, 15A AT 151-300V
4. MAX TORQUE: 3.5 IN. LBS. (.4 Nm)
5. WIRE STRIP: .37 (9.5mm)
6. DIELECTRIC VOLTAGE WITHSTAND: AC 2500V FOR 1 MINUTE
7. INSULATION RESISTANCE: DC 500V, 500MΩ
8. RATED IMPULSE VOLTAGE: 4000V, PLUS AND MINUS 5 TIMES EACH
9. OPERATING TEMPERATURE: -40°C TO +105°C
10. DIMS. GREATER THAN 1.18 (30mm) HAVE A ⓑ TOLERANCE OF ±.02 (0.5mm)

PART NUMBER DATA										
CIRCUITS	PART NUMBER	ENGINEERING NUMBER	COLOR	A IN	B IN	C IN	mm	mm	mm	mm
2	397110002	M753B-00-2-02-3	GREEN	.79	20.0	.200	5.08	.600	15.24	20.32
3	397110003	M753B-00-2-03-3	GREEN	.99	25.0	.400	10.15	.800	20.32	25.40
4	397110004	M753B-00-2-04-3	GREEN	1.19	30.1	.600	15.23	1.000	25.40	30.48
5	397110005	M753B-00-2-05-3	GREEN	1.39	35.2	.800	20.31	1.200	30.48	35.56
6	397110006	M753B-00-2-06-3	GREEN	1.59	40.3	1.000	25.39	1.400	35.56	40.64
7	397110007	M753B-00-2-07-3	GREEN	1.79	45.4	1.199	30.46	1.600	40.64	45.72
8	397110008	M753B-00-2-08-3	GREEN	1.99	50.4	1.399	35.54	1.800	45.72	50.80
9	397110009	M753B-00-2-09-3	GREEN	2.19	55.5	1.599	40.62	2.000	50.80	55.88
10	397110010	M753B-00-2-10-3	GREEN	2.39	60.6	1.799	45.70	2.200	55.88	60.96
11	397110011	M753B-00-2-11-3	GREEN	2.59	65.7	1.999	50.77	2.400	60.96	66.04
12	397110012	M753B-00-2-12-3	GREEN	2.79	70.8	2.199	55.85	2.600	66.04	71.12
13		M753B-00-2-13-3	GREEN	2.99	75.8	2.399	60.93	2.800	71.12	76.20
14		M753B-00-2-14-3	GREEN	3.19	80.9	2.599	66.01	3.000	76.20	81.28
15		M753B-00-2-15-3	GREEN	3.39	86.0	2.799	71.08	3.200	81.28	86.36
16		M753B-00-2-16-3	GREEN	3.59	91.1	2.999	76.16	3.400	86.36	91.44
17		M753B-00-2-17-3	GREEN	3.79	96.2	3.198	81.24	3.600	91.44	96.52
18		M753B-00-2-18-3	GREEN	3.99	101.2	3.398	86.32	3.800	96.52	101.60
19		M753B-00-2-19-3	GREEN	4.19	106.3	3.598	91.39	4.000	101.60	106.68
20		M753B-00-2-20-3	GREEN	4.39	111.4	3.798	96.47	4.200	106.68	111.76
21		M753B-00-2-21-3	GREEN	4.59	116.5	3.998	101.55	4.400	111.76	116.84
22		M753B-00-2-22-3	GREEN	4.79	121.6	4.198	106.63	4.600	116.84	121.92
23		M753B-00-2-23-3	GREEN	4.99	126.6	4.398	111.70	4.800	121.92	127.00
24		M753B-00-2-24-3	GREEN	5.19	131.7	4.598	116.78	5.000	127.00	

ⓑ SEE SHEET 2 FOR OPTIONAL (BLACK) PART NUMBERS

ADD SHEET 2, REV NOTES EC NO: IPC2015-1309 DRWN: RSTONE 1/27/15 CHKD: B GARDEN 20/50/122 APPR: JFMURPHY 20/14/10/16 REV DESCRIPTION	QUALITY SYMBOL	GENERAL TOLERANCES (UNLESS SPECIFIED)	DIMENSION STYLE	SCALE	DESIGN UNITS	THIRD ANGLE PROJECTION
	▽=0 ▽=0	mm INCH 4 PLACES ±— ±— 3 PLACES ±— ±.005 2 PLACES ±0.13 ±.01 1 PLACE ±0.3 ±— ANGULAR ±—°	IN/MM	---	METRIC	DRAWN BY DATE RSTONE 2014/03/17 CHECKED BY DATE G FARNW 2014/05/15 APPROVED BY DATE JFMURPHY 2014/10/16
		DRAFT WHERE APPLICABLE MUST REMAIN WITHIN DIMENSIONS	SEE CHART			TITLE TERMINAL PLUG, 5.08MM HORIZONTAL SCREW WITH MOUNTING ENDS MOLEX INCORPORATED MATERIAL NO. SD-39711-001 DOCUMENT NO.
				SIZE C		SHEET NO. 1 OF 1 THIS DRAWING CONTAINS INFORMATION THAT IS PROPRIETARY TO MOLEX INCORPORATED AND SHOULD NOT BE USED WITHOUT WRITTEN PERMISSION

REF. LAST 2 DIGITS OF PART NUMBER EQUALS CIRCUIT COUNT

PART NUMBER DATA									
CIRCUITS	PART NUMBER	ENGINEERING NUMBER	COLOR	A IN	mm	B IN	mm	C IN	mm
2	395341002	M753B-00-2-02-1	BLACK	.79	20.0	.200	5.08	.600	15.24
3	395341003	M753B-00-2-03-1	BLACK	.99	25.0	.400	10.15	.800	20.32
4	395341004	M753B-00-2-04-1	BLACK	1.19	30.1	.600	15.23	1.000	25.40
5	395341005	M753B-00-2-05-1	BLACK	1.39	35.2	.800	20.31	1.200	30.48
6	395341006	M753B-00-2-06-1	BLACK	1.59	40.3	1.000	25.39	1.400	35.56
7	395341007	M753B-00-2-07-1	BLACK	1.79	45.4	1.199	30.46	1.600	40.64
8	395341008	M753B-00-2-08-1	BLACK	1.99	50.4	1.399	35.54	1.800	45.72
9	395341009	M753B-00-2-09-1	BLACK	2.19	55.5	1.599	40.62	2.000	50.80
10	395341010	M753B-00-2-10-1	BLACK	2.39	60.6	1.799	45.70	2.200	55.88
11	395341011	M753B-00-2-11-1	BLACK	2.59	65.7	1.999	50.77	2.400	60.96
12	395341012	M753B-00-2-12-1	BLACK	2.79	70.8	2.199	55.85	2.600	66.04
13		M753B-00-2-13-1	BLACK	2.99	75.8	2.399	60.93	2.800	71.12
14		M753B-00-2-14-1	BLACK	3.19	80.9	2.599	66.01	3.000	76.20
15		M753B-00-2-15-1	BLACK	3.39	86.0	2.799	71.08	3.200	81.28
16	395341016	M753B-00-2-16-1	BLACK	3.59	91.1	2.999	76.16	3.400	86.36
17		M753B-00-2-17-1	BLACK	3.79	96.2	3.198	81.24	3.600	91.44
18		M753B-00-2-18-1	BLACK	3.99	101.2	3.398	86.32	3.800	96.52
19		M753B-00-2-19-1	BLACK	4.19	106.3	3.598	91.39	4.000	101.60
20		M753B-00-2-20-1	BLACK	4.39	111.4	3.798	96.47	4.200	106.68
21	395341021	M753B-00-2-21-1	BLACK	4.59	116.5	3.998	101.55	4.400	111.76
22		M753B-00-2-22-1	BLACK	4.79	121.6	4.198	106.63	4.600	116.84
23		M753B-00-2-23-1	BLACK	4.99	126.6	4.398	111.70	4.800	121.92
24	395341024	M753B-00-2-24-1	BLACK	5.19	131.7	4.598	116.78	5.000	127.00

CONTACT FACTORY FOR OPTIONAL COLORS

ADD SHT 2, NEW P/N 395341021 EC NO: IP/2014-1309 12/1/15 DRAWN: RSTONE 2015/01/22 CHECKED: B ARDEN 2015/01/22 APPR: J MURPHY 2014/10/16	QUALITY SYMBOLS	GENERAL TOLERANCES (UNLESS SPECIFIED)	DIMENSION STYLE	SCALE	DESIGN UNITS	THIRD ANGLE PROJECTION
	▽=0	mm INCH	IN/MM	---	METRIC	
	∠=0	4 PLACES ±--- ±---	DRAWN BY DATE	RSTONE 2014/03/17	TITLE	
		3 PLACES ±--- ±.005	CHECKED BY DATE	G FARNW 2014/05/15	TERMINAL PLUG, 5.08MM HORIZONTAL SCREW WITH MOUNTING ENDS	
	2 PLACES ±0.13 ±.01	APPROVED BY DATE	JFMURPHY 2014/10/16	MOLEX INCORPORATED		
	1 PLACE ±0.3 ±---	MATERIAL NO.	SEE CHART	DOCUMENT NO.	SD-39711-001	
	ANGULAR ±---	SHEET NO.			2 OF 2	
		DRAFT WHERE APPLICABLE MUST REMAIN WITHIN DIMENSIONS				
		THIS DRAWING CONTAINS INFORMATION THAT IS PROPRIETARY TO MOLEX INCORPORATED AND SHOULD NOT BE USED WITHOUT WRITTEN PERMISSION				