

## Excellent Integrated System Limited

Stocking Distributor

Click to view price, real time Inventory, Delivery & Lifecycle Information:

[Molex Connector Corporation](#)  
[0444720312](#)

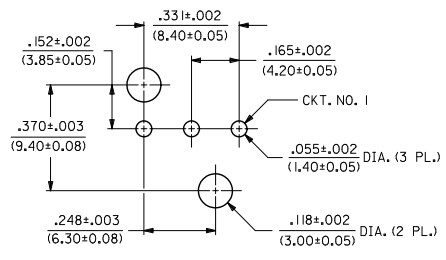
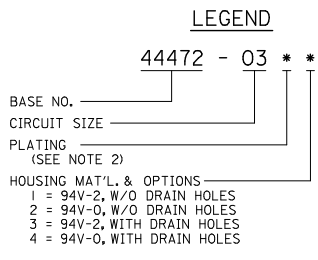
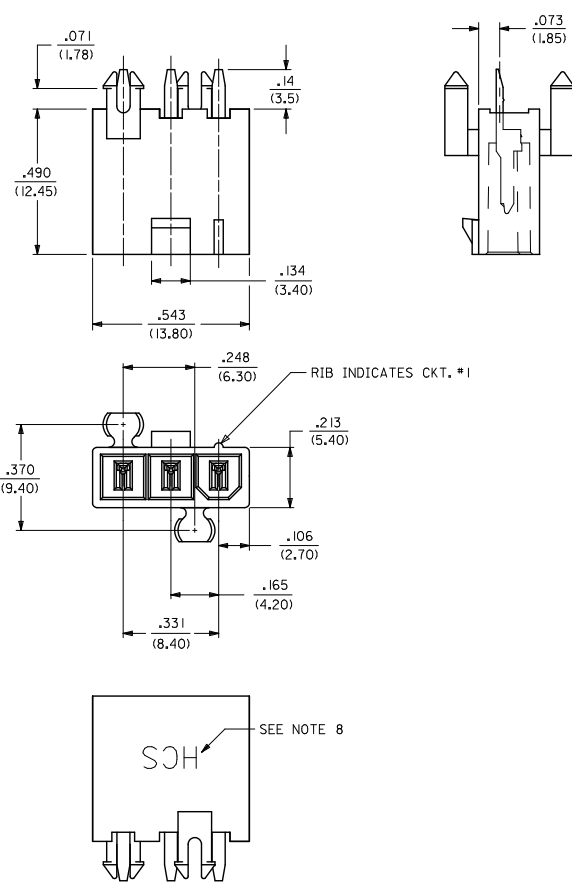
For any questions, you can email us directly:

[sales@integrated-circuit.com](mailto:sales@integrated-circuit.com)

NOTES:

1. MATERIALS:  
HOUSING MATERIAL AND DRAIN HOLE OPTIONS:  
1-NYLON 6/6, UL94 V-2, COLOR: NATURAL, WITHOUT DRAIN HOLES  
2-NYLON 6/6, UL94 V-0, COLOR: NATURAL, WITHOUT DRAIN HOLES  
4-NYLON 6/6, UL94 V-0, COLOR: NATURAL, WITH DRAIN HOLES  
TERMINAL:  
COPPER ALLOY
2. TERMINAL PLATING:  
1-.000100/(0.00254) MIN. MATTE TIN OVER .000050/(0.00127) MIN. NICKEL
3. PRODUCT SPECIFICATION: PS-44476-001
4. PACKAGING: TRAY PACKED PER PK-5566-002
5. PART MATES WITH MINI-FIT JR. RECEPTACLE NO. 5557.
6. PART IS NOT DESIGNED FOR CURRENT SHARING.
7. PARTS ARE NOT TO BE MATED OR UN-MATED WHILE CIRCUITS ARE LIVE.
8. PARTS PRODUCED AFTER JULY 1, 2004 WILL HAVE "HCS" MARKING INSTEAD OF BLACK STRIPE.
9. PART CONFORMS TO CLASS 'B' REQUIREMENTS OF COSMETIC SPECIFICATION PS-45499-002.

ITEM NO.	PLATING (SEE NOTE 2)	ASS'Y. OPT.
44472-0311	1	1
44472-0312	1	2
44472-0314	1	4



RECOMMENDED HOLE LAYOUT FOR .070/(1.78) MAX. THICK P. C. BOARD

CHANGE PLATING	EC NO.	DRAWN BY	CHKD BY	APPR: SMITH	DESCRIPTION	QUALITY SYMBOLS	GENERAL TOLERANCES (UNLESS SPECIFIED)		DIMENSION STYLE		SCALE	DESIGN UNITS	THIRD ANGLE PROJECTION	
							mm	INCH	IN/MM	DATE				
UCP2072-1560	2072/01/09	DRW:NGUYEN	2072/01/09	CHKD: BELL	2072/01/09	APPR: SMITH	2072/02/02	4 PLACES ±---	±---	IN/MM	DATE	4:1	METRIC	THIRD ANGLE PROJECTION
								3 PLACES ±---	±.010		DATE			
								2 PLACES ±0.25	±.015		DATE			
								1 PLACE ±0.38	±---		DATE			
								ANGULAR ±1/2°			DATE			
								DRAFT WHERE APPLICABLE MUST REMAIN WITHIN DIMENSIONS			DATE			
								SEE CHART						
								THIS DRAWING CONTAINS INFORMATION THAT IS PROPRIETARY TO MOLEX INCORPORATED AND SHOULD NOT BE USED WITHOUT WRITTEN PERMISSION						