

## Excellent Integrated System Limited

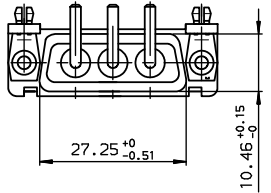
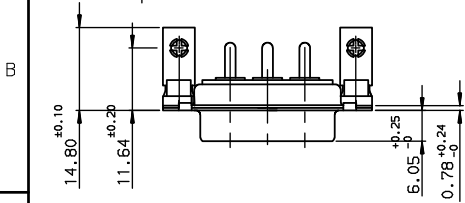
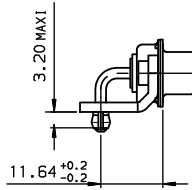
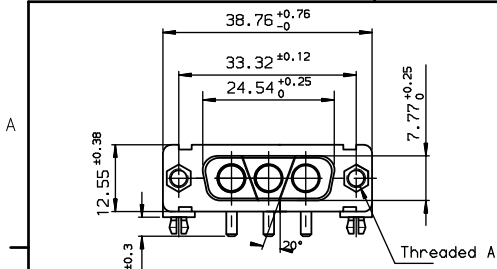
Stocking Distributor

Click to view price, real time Inventory, Delivery & Lifecycle Information:

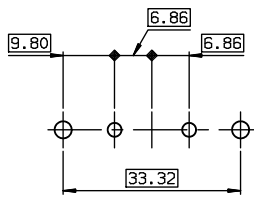
[FCI](#)  
[DAL3V3S500G30LF](#)

For any questions, you can email us directly:

[sales@integrated-circuit.com](mailto:sales@integrated-circuit.com)



LAYOUT DIMENSIONS (after plating)  
CONNECTOR SIDE VIEW



TIN-LEAD PART NUMBER

DA03V3S500G30	UNC 4, 40
DAL3V3S500G30	M3
PART NUMBER	Threaded A

LEAD FREE PART NUMBER

DA03V3S500G30LF	UNC 4, 40
DAL3V3S500G30LF	M3
PART NUMBER	Threaded A

GENERAL CHARACTERISTICS AND ROHS INFORMATIONS:  
SEE DRAWING C01-8639-0001

Copyright FCI

rev	ecn no	dr	date
B	-	BAR	2003/11/20
C	L505-001	MPE	2005/03/07
D	L506-0095	LGO	2006/07/20
-	-	-	-
-	-	-	-
-	-	-	-

www.fciconnect.com		surface	tolerance std	projection	mm
		ISO 1302	ISO 406 ISO 1101		
TOLERANCES UNLESS OTHERWISE SPECIFIED					
Dr	JOUBERT	1998/04/07	ANGULAR	0.x	±0.1
Eng	PESSON	1998/04/07	LINEAR	0.xx	±0.1
Chr	LEGARE	1998/04/07	0.xxx	±0.1	ECN
Appr	LEGARE	1998/04/07	Product Family	D-SUB	Spec ref -
<b>FCI</b>		SOCKET CONNECTOR WITH POWERS		size	A3
contacts		CONTACTS		Scale	1.5
catalog no		-		ECN	L506-0095
				Spec ref	-
				size	C01-8639-1579
				Rev.	D
				CUSTOMER	sheet 1 of 1

REV F - 2006-04-17