



Distributor of FCI: Excellent Integrated System Limited

Datasheet of DAV3V3P300G30LF - D-Sub Connector Plug, Male Pins 3 (Power) Position
Through Hole Solder

Contact us: sales@integrated-circuit.com Website: www.integrated-circuit.com

Excellent Integrated System Limited

Stocking Distributor

Click to view price, real time Inventory, Delivery & Lifecycle Information:

[FCI](#)

[DAV3V3P300G30LF](#)

For any questions, you can email us directly:

sales@integrated-circuit.com

Contact us: sales@integrated-circuit.com Website: www.integrated-circuit.com

GENERAL CHARACTERISTICS : SEE DRAWING C01-8639-0001

A

B

C

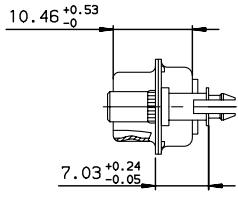
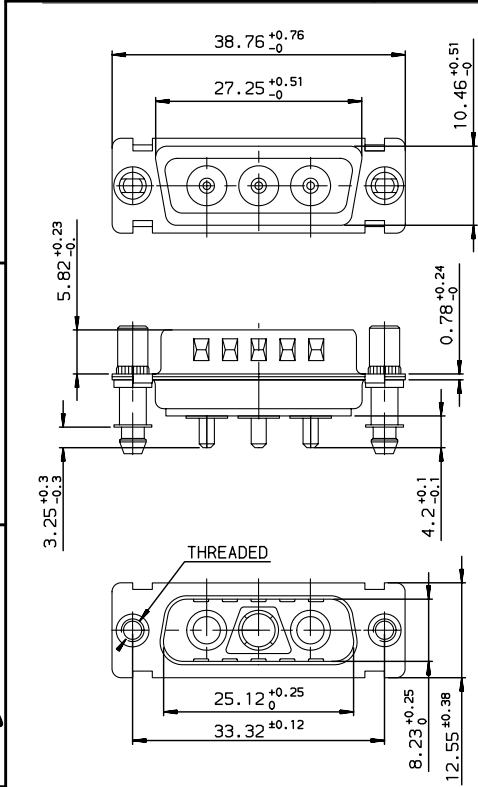
D

A

B

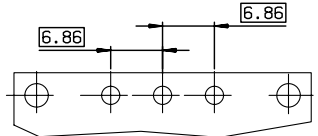
C

D



DAV3V3P300G30	UNC 4.40
DAV3V3P300G40	UNC 4.40
DAV3V3P300H30	UNC 4.40
DAV3V3P300H40	UNC 4.40
DA13V3P300G30	M3
DA13V3P300G40	M3
DA13V3P300H30	M3
DA13V3P300H40	M3
PART NUMBER	Threaded A

LAYOUT DIMENSIONS (after plating)
CONNECTOR SIDE VIEW



REV F - 2006-04-17

European Views

www.fciconnect.com		surface ISO 1302	tolerance std ISO 406 ISO 1101	projection mm	mm
		TOLERANCES UNLESS OTHERWISE SPECIFIED			
Dr	PESSON	2003/11/07	ANGULAR	0.X	±0.1
Eng	PESSON	2003/11/07	LINEAR	0.XX	±0.1
Chr	LEGARE	2003/11/07	0.XX*	0.XXX	±0.1
Appr	LEGARE	2003/11/07	Product family	SUB	Spec ref -
FCI logo			PIN CONNECTOR SUB D		Rev.
			WITH POWERS CONTACTS		E
catalog no			C01-8639-1517		CUSTOMER sheet 1 of 1

rev	ecn no	dr	date
D		MPE	2003/11/07
E	LS07-0094	MPE	2007/04/05
-	-	-	-
-	-	-	-
-	-	-	-
-	-	-	-