

Excellent Integrated System Limited

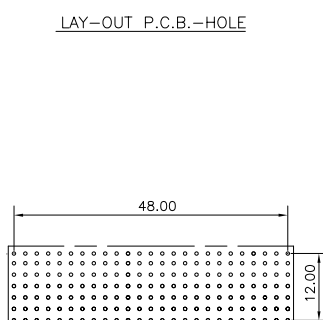
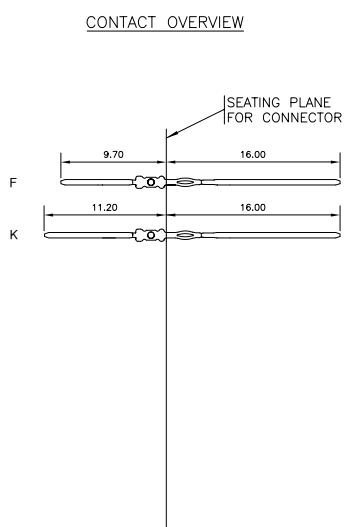
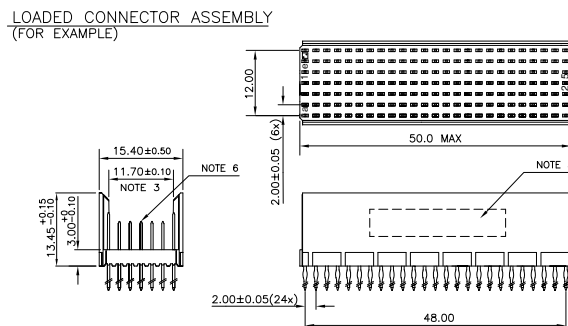
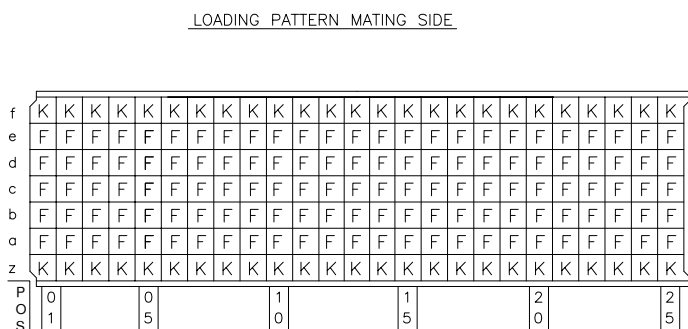
Stocking Distributor

Click to view price, real time Inventory, Delivery & Lifecycle Information:

[FCI](#)
[HM2P08PNE124GFLF](#)

For any questions, you can email us directly:

sales@integrated-circuit.com



HM2P08PNE124

LEAD FREE INDICATOR : LF = LEAD FREE
(DIGIT 15 & 16)

PLATING CODE (DIGIT 13 AND 14)
(REF DRW NO. BS.C. 201844, 003)

NOTES

1. THIS PRODUCT IS CSA APPROVED.
 2. THIS PRODUCT IS UL RECOGNIZED.
 3. MEASURED AT THE BOTTOM.
 4. MATERIAL CONTACT: PHOSPHORBRONZE
HOUSING: CREAM WHITE GLASS FILLED POLYESTER UL-94V0
 5. CONNECTOR PRINTED WITH P/N AND DATE CODE.
 6. FOR ACTUAL CONTACT LOADINGS, SEE LOADING PATTERN MATING SIDE.
 7. SHAPE OF CONNECTOR HOUSING CAN ALTER DEPENDING ON
PRODUCTION LOCATION
 8. THE PRODUCT (LF) MEETS EUROPEAN UNION DIRECTIVES AND OTHER COUNTRY
REGULATIONS AS DESCRIBED IN GS-22-008
 9. FOR RECOMMENDED PTH DIMENSIONS REFER DRAWING : BS, A , 201572 , 001
- CATALOG NO: HM2P08PNET24----

mat'l. code SEE NOTE 4				surface ✓ tolerance ISO 1302 ISO 406 ISO 1101		projection 		product family MILLIPACS	
ltr	ec'n no	dr	date	tolerances unless otherwise specified				title	
A	105-0239		2005-11-19			MM		MPACS 5+2R STR HDR PR CONN TYPE B	
B	106-0131	MNN	2006-07-26	angles linear 0±0.2 0±0.1		scale —		dwg no sheet 1 of 1 size	
				engr MNI K VANDANATH 2005-11-19				BS _C , 203028,420 A ₃	
				chr BLU K PAUL 2006-07-26				type Product Customer Drawing	
				appd BLU K PAUL 2006-07-26					
sheet index		revision sheet B							