



Distributor of FCI: Excellent Integrated System Limited

Datasheet of ICD26S13E4GL00LF - D-Sub Connector Receptacle, Female Sockets 26 Position Through Hole, Right Angle Solder

Contact us: sales@integrated-circuit.com Website: www.integrated-circuit.com

Excellent Integrated System Limited

Stocking Distributor

Click to view price, real time Inventory, Delivery & Lifecycle Information:

[FCI](#)

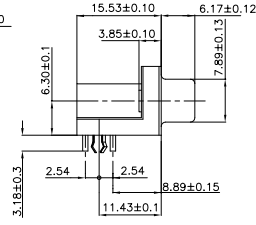
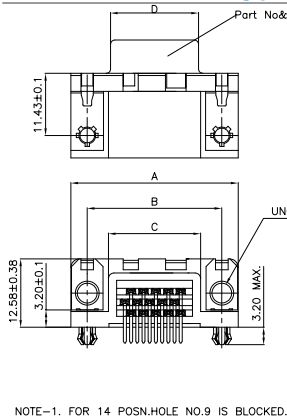
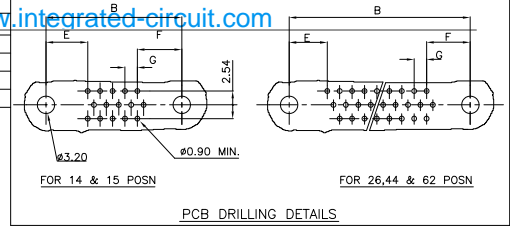
[ICD26S13E4GL00LF](#)

For any questions, you can email us directly:

sales@integrated-circuit.com

Contact us: sales@integrated-circuit.com Website: www.integrated-circuit.com

SIZE	A	B	C	D	E	F	G
14/15	30.81	24.99	16.96	16.21	7.68	8.19	2.285
26	39.14	33.32	25.18	24.54	7.02	8.01	2.285
44	53.03	47.04	39.12	38.25	7.01	8.02	2.285
62	69.32	63.50	55.68	54.71	7.03	8.21	2.41



NOTE-1. FOR 14 POSN, HOLE NO.9 IS BLOCKED.

ORDERING INFORMATION

ICDXXS13EXXXOOLFL

- SERIES: I C D X X S 1 3 E X X X O O L F
- NO. OF CONTACTS: 14, 15, 26, 44 & 62
- TYPE OF CONTACTS: S - SOCKET
- TYPE OF TERMINATION: 13 - ANGLED SPILL, PITCH 2.54 USA, FOOT PRINT 8.89 USA
- HEIGHT OF TERMINATION: E - 3.18 US STANDARD
- LEAD FREE: 00 - STANDARD, 09 - HIGH TEMP. IR or Vapor Reflow suitable
- MOUNTING OPTIONS: PA - STANDARD HOLE, PL - THREADED INSERT M3, PX - FEMALE SCREW LOCK UNC 4.40, PV - FEMALE SCREW LOCK UNC 4.40, GL - HARPOON+INSERT M3+METAL BRACKET, GX - HARPOON+INSERT UNC 4.40+METAL BRACKET, GV - HARPOON+F.SCREW LOCK UNC 4.40+METAL BRACKET, GA - HARPOON+METAL BRACKET+STANDARD HOLE, UL - INSERT M3+METAL BRACKET, UX - INSERT UNC 4.40+METAL BRACKET, UV - F.SCREW LOCK UNC 4.40+METAL BRACKET
- PLATING: 4 - FLASH Au+SnPb/Sn, 6 - 0.76 μ Au+SnPb/Sn

- MATERIAL**
- SHELL: STEEL TIN/Zinc Cr 3 PLATED.
 - INSULATORS: SELF EXTINGUISHING BLACK POLYESTER UL CLASS 94V0. THE HOUSING WILL WITHSTAND EXPOSURE TO 260-265°C IF WE USE PROTECTIVE ADHESIVE (type Kapton or Teflon) OR PROTECTIVE METALLIC DEVICE
 - CONTACTS: COPPER ALLOY
 - PLATING: GOLD OVER NICKEL, SnPb over Ni
 - ACTIVE ZONE: GOLD OVER NICKEL
 - TERMINATION ZONE: SnPb over Ni
 - FOR LEAD FREE PLATING: 2 μ MIN. MATTE TIN TOP OVER, 1.27 μ MIN. NICKEL UNDER PLATE (ON TERMINATION ZONE)
 - METAL BRACKET: BRASS, TIN /Zinc Cr3 PLATED.
 - SCREW LOCK: BRASS, TIN /Zinc Cr3 PLATED.
 - HARPOON: BRASS, TIN PLATED.
 - CLINCH NUT: BRASS, TIN /Zinc Cr3 PLATED.
- ELECTRICAL DATA**
- MAX. CURRENT RATING: 3A
 - TEST VOLTAGE: 1000V
 - RATED VOLTAGE: 300V
 - CONTACT RESISTANCE: <25mΩ
 - SHELL RESISTANCE: <5mΩ
 - INSULATION RESISTANCE: >5000MΩ
- ENVIRONMENTAL CHARACTERISTICS**
- OPERATING TEMPERATURE RANGE: -55°C +125°C
- MECHANICAL CHARACTERISTICS**
- MATING/UNMATING CYCLES (Min.): 200 MATINGS FOR <0.40 μ GOLD PLATING, 500 MATINGS FOR >0.75 μ GOLD PLATING
 - INSERTION/EXTRACTION FORCE PER CONTACTS: 5 N Max, /0.3 N Min.

"This LF product meets European Union Directives and other country regulations as described in GS-22-008"

The housing will withstand exposure to 260°C peak temperature for 3.5 seconds in a wave solder application with a 1.6mm minimum thick circuit board.

Packaging as per GS-14-920

mat'l. code	surface	tolerance	projection	product family
SEE NOTE 4	ISO 1302	ISO 406 ISO 1101		COMPACT D
ltr	ecn no	dr	date	title
C	106-0074	GVJ	2006/06/08	C-D A/S FEMALE CONNECTOR
	angles	linear	0.001	MM
	0°:1"	0.001, 0.002	scale	-
dr	GEORGE V. JOSEPH	2004/10/12		
enrg	Elias C. Thomas	2004/10/12		
chr	GEORGE V. JOSEPH	2006/06/23		
appd	K.V. SIVADAS	2006/06/23		
sheet	revision	C		
index	sheet	1		