

Excellent Integrated System Limited

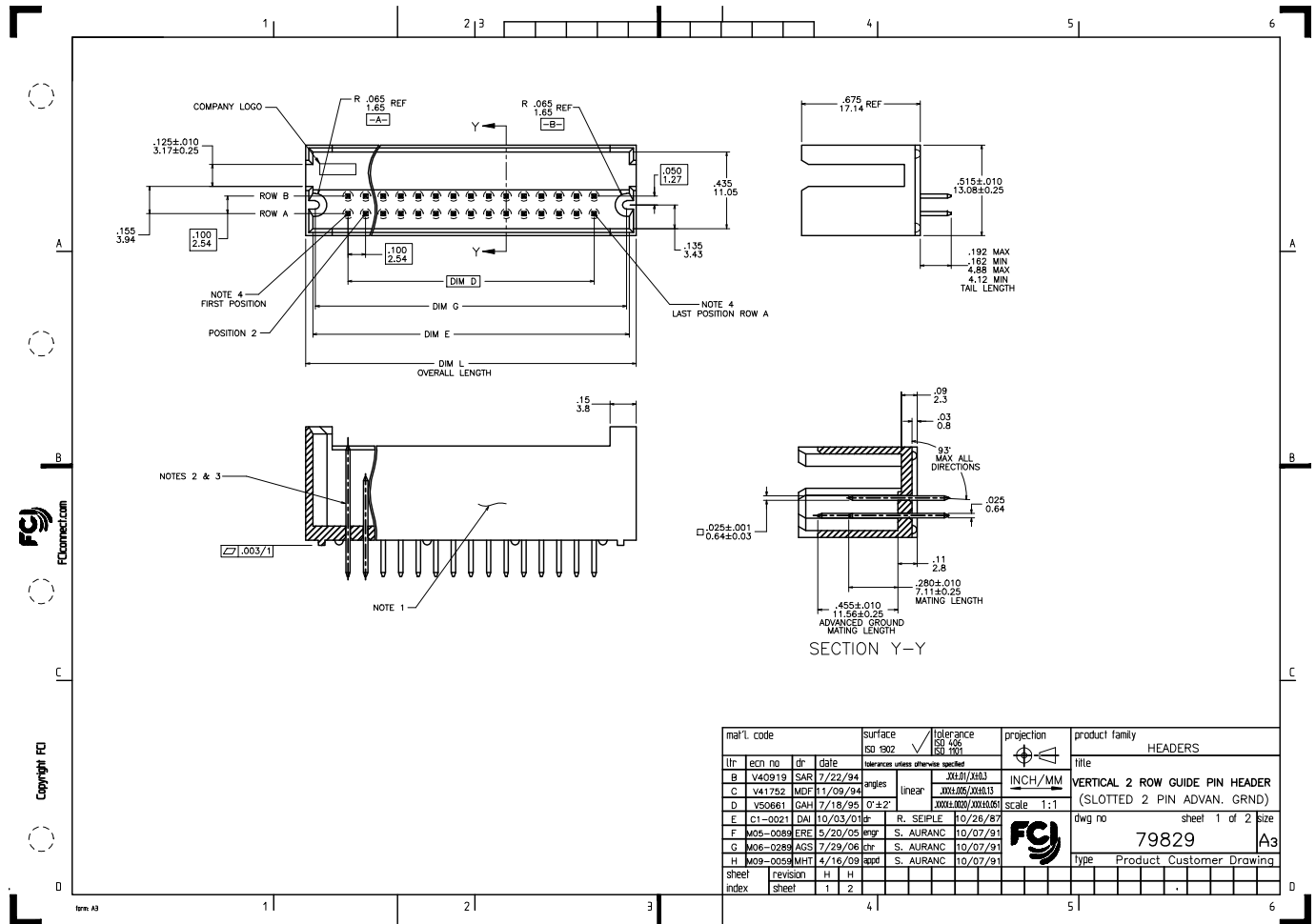
Stocking Distributor

Click to view price, real time Inventory, Delivery & Lifecycle Information:

[FCI](#)
[79829-537LF](#)

For any questions, you can email us directly:

sales@integrated-circuit.com



PRODUCT NO NOTE 6	SIZE	OVERALL LENGTH DIM L	DIM D	DIM E	DIM G
79829-308	2 X 8	1.18/30.0	.700/17.78	1.10/27.9	1.07/27.2
-315	2 X 15	1.88/47.8	1.400/35.56	1.80/45.7	1.77/45.0
-318	2 X 18	2.18/55.4	1.700/43.18	2.10/53.3	2.07/52.6
-322	2 X 22	2.58/65.5	2.100/53.34	2.50/63.5	2.47/62.7
-324	2 X 24	2.78/70.6	2.300/58.42	2.70/68.6	2.67/67.8
-333	2 X 33	3.68/93.5	3.200/81.28	3.60/91.4	3.57/90.7
-337	2 X 37	4.08/103.6	3.600/91.44	4.00/101.6	3.97/100.8
-366	DISCONTINUED				
-508	2 X 8	1.18/30.0	.700/17.78	1.10/27.9	1.07/27.2
-515	2 X 15	1.88/47.8	1.400/35.56	1.80/45.7	1.77/45.0
-518	2 X 18	2.18/55.4	1.700/43.18	2.10/53.3	2.07/52.6
-522	2 X 22	2.58/65.5	2.100/53.34	2.50/63.5	2.47/62.7
-524	2 X 24	2.78/70.6	2.300/58.42	2.70/68.6	2.67/67.8
-533	2 X 33	3.68/93.5	3.200/81.28	3.60/91.4	3.57/90.7
79829-537	2 X 37	4.08/103.6	3.600/91.44	4.00/101.6	3.97/100.8

NOTES:

- ① MOLDING MATERIAL: HI-TEMP RESIN PER UL 94 V-0 COLOR-NATURAL
- ② TERMINAL PLATING: (NOTE 9)
 79829-3XX SERIES- 50u"/1.27u Au MIN OVER
 1 79829-5XX SERIES- 30u"/.76u GXT OVER
 50u"/1.27u Ni MIN
- ③ PIN RETENTION TO BE 3 LBS / 1.36 KG MIN PER PIN IN EITHER DIRECTION.
- ④ LOCATIONS OF ADVANCED GROUND PINS, FIRST AND LAST POSITIONS OF ROW "A".
- ⑤ TERMINAL MATERIAL : 3/4 HARD PHOS BRONZE ALLOY UNS C51000.
- ⑥ ADD "LF" SUFFIX AT THE END OF PART NUMBER FOR LEAD FREE OPTION.
7. THE HOUSING WILL WITHSTAND EXPOSURE TO 260°C PEAK TEMPERATURE FOR 15 SECONDS IN A WAVE SOLDER APPLICATION WITH A 1.5mm MINIMUM THICK CIRCUIT BOARD. SEE APPLICATION NOTES/PROCEDURES IF THEY ARE AVAILABLE.
- ⑧ THIS PRODUCT MEETS EUROPEAN UNION DIRECTIVES AND OTHER COUNTRY REGULATION AS DESCRIBED IN GS-22-008.
- ⑨ PLATING OPTIONS:
 MAY BE EITHER GOLD OR GXT PLATED AT MANUFACTURER'S OPTION.

mat'l. code		surface	tolerance	projection	product family
ISO 1902		ISO 406	ISO 1101		HEADERS
tr	ecm no	dr	date	angles	title
H				linear	VERTICAL 2 ROW GUIDE PIN HEADER
				0 ± .2	(SLOTTED 2 PIN ADVAN. GRND)
				dr	dwg no
				engr	sheet 2 of 2 size
				chr	A3
				appd	Type Product Customer Drawing
sheet index	revision sheet				