

Excellent Integrated System Limited

Stocking Distributor

Click to view price, real time Inventory, Delivery & Lifecycle Information:

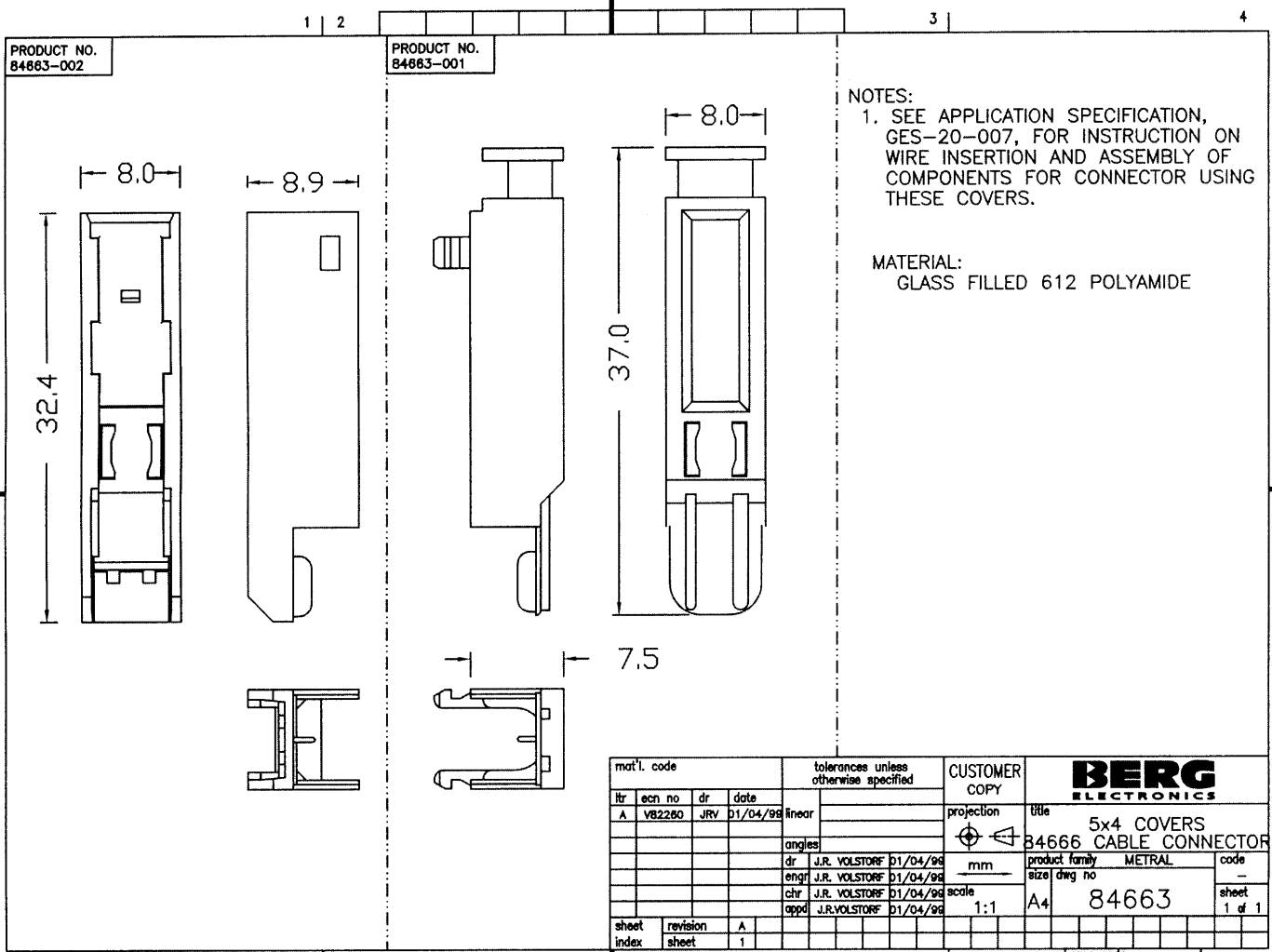
[FCI](#)

[84663-001LF](#)

For any questions, you can email us directly:

sales@integrated-circuit.com

All rights strictly reserved. Reproduction or issue to third parties in any form
 without the prior written authority from the proprietor.
 Property of ©BERG ELECTRONICS Copyright BERG ELECTRONICS INC.
 Tous droits strictement réservés. Reproduction ou communication à des tiers interdite
 sans la permission écrite du propriétaire.
 Propriété de ©BERG ELECTRONICS Droits de reproduction BERG ELECTRONICS INC.



NOTES:
 1. SEE APPLICATION SPECIFICATION, GES-20-007, FOR INSTRUCTION ON WIRE INSERTION AND ASSEMBLY OF COMPONENTS FOR CONNECTOR USING THESE COVERS.

MATERIAL:
 GLASS FILLED 612 POLYAMIDE

| | | | | | | | |
|-------------|----------------|---------------------------------------|----------|---------------|------------------------|-------------------------|--------|
| mat'l. code | | tolerances unless otherwise specified | | CUSTOMER COPY | | BERG ELECTRONICS | |
| itr | ecm no | dr | date | linear | projection | title | |
| A | VB2280 | JRV | 01/04/98 | | | 5x4 COVERS | |
| | | | | angles | | 84666 CABLE CONNECTOR | |
| | | | | dr | J.R. VOLSTORF 01/04/98 | product family | METRAL |
| | | | | engr | J.R. VOLSTORF 01/04/98 | size | dwg no |
| | | | | chr | J.R. VOLSTORF 01/04/98 | scale | 1:1 |
| | | | | appd | J.R. VOLSTORF 01/04/98 | A4 | 84663 |
| sheet index | revision sheet | A | 1 | | | cage code | 22526 |
| | | | | | | | 1 of 1 |

form no. 7530-001-103