

Excellent Integrated System Limited

Stocking Distributor

Click to view price, real time Inventory, Delivery & Lifecycle Information:

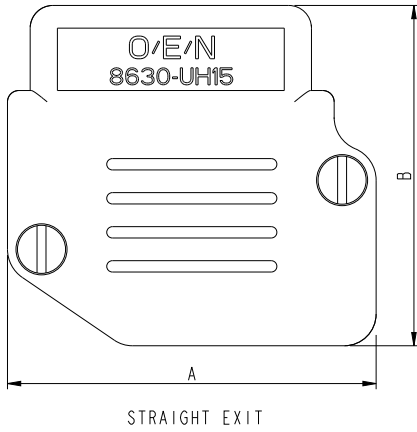
[FCI](#)

[8630UH09LF](#)

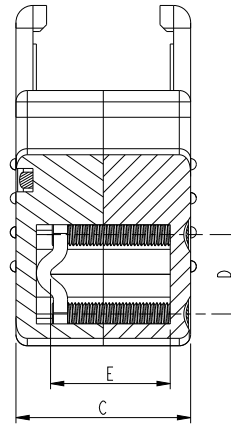
For any questions, you can email us directly:

sales@integrated-circuit.com

Shell Size	Part No.	DIMENSIONS					
		A	B	C	D	E Max	E Min
9	8630UH09	24.0	30.0	16.0	7.0	10.5	2.0
15	8630UH15	32.5	30.0	16.0	7.0	10.5	2.0
25	8630UH25	46.0	46.0	16.0	14.5	10.0	4.0
37	8630UH37	58.6	47.0	16.0	16.0	10.2	2.5
50	8630UH50	56.5	48.5	18.2	18.0	12.5	4.0



90° EXIT



Tous droits strictement réservés. Reproduction ou communication des listes, schémas, données techniques, données de construction, sans autorisation écrite de propriétaire. Property of FCI. Copyright © FCI.

FCI

All rights strictly reserved. Reproduction or issue to third parties, in any form whatsoever, is not permitted without written authority from the proprietor. Property of FCI. Copyright © FCI.

rev	ecn no	dr	date
A	109-0043	AMR	2009-03-18
-	-	-	-
-	-	-	-
-	-	-	-
-	-	-	-
-	-	-	-

www.fciconnect.com		surface - ISO 1302	tolerance std ISO 406 ISO 1101	projection	mm
Dr ABHILASH M.R 2009-03-17		TOLERANCES UNLESS OTHERWISE SPECIFIED		size	Scale
Eng ABHILASH M.R 2009-03-17		ANGULAR	0.X ±0.3	A3	3:1
Chr ABHILASH M.R 2009-03-17		0° ±2°	0.XX ±0.1	ECN	109-0043
Appr ABHILASH M.R 2009-03-17		Product family	0.XXX ±0.05	Spec ref	-
title UNIVERSAL HOOD			eng no	C-DSUB-0177	Rev.
D-SUB			CUSTOMER	sheet 1 of 1	A
catalog no					

For 25 Position hood, External cable clamp is used
Ref Drw. No. C-DSUB-0063