



Distributor of ASSMANN WSW Components: Excellent Integrated System Limited

Datasheet of A22-LC-TR-R - IC SOCKET 22POS .300 SPACING

Contact us: sales@integrated-circuit.com Website: www.integrated-circuit.com

Excellent Integrated System Limited

Stocking Distributor

Click to view price, real time Inventory, Delivery & Lifecycle Information:

[ASSMANN WSW Components](#)

[A22-LC-TR-R](#)

For any questions, you can email us directly:

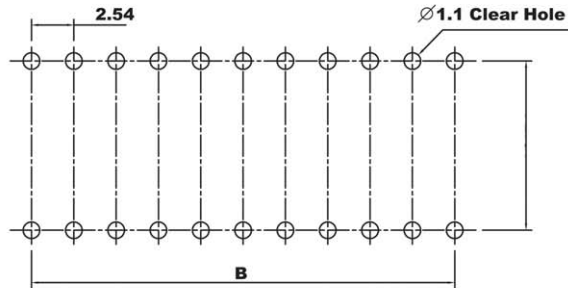
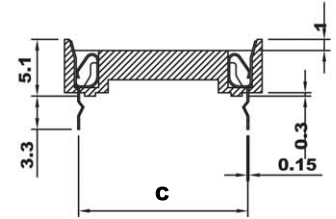
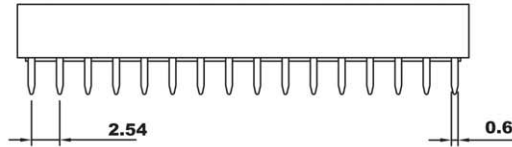
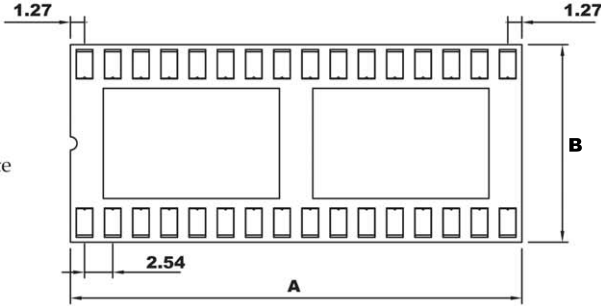
sales@integrated-circuit.com

IC Socket 2.54mm(0.100")

Specifications

Contact Resistance: 30 mohms max. at DC 100mA
 Insulator Resistance: 1000 megohms min. at DC 500V
 Current Rating: 1 Amp
 Dielectric Withstanding Voltage: AC 500V for 1 minute
 Operating Temperature: -55°~ +105°C
 Contact: Phosphor Bronze
 Housing: PBT & 30% Glass Fiber (UL 94V-0)

No. of Contacts	Qty per Tube	Dimensions		
		A	B	C
06	80	7.62	10.0	7.62
08	60	10.06	9.96	7.62
14	34	17.68	9.96	7.62
16	30	20.22	9.96	7.62
18	26	22.76	9.96	7.62
20	24	22.86	9.96	7.62
22	21	27.80	9.96	7.62
22*	21	27.70	12.62	10.16
24	20	30.38	17.68	15.24
24**	20	30.38	17.68	7.62
28	17	35.46	17.68	15.24
28**	17	35.46	17.68	7.62
32	15	40.50	17.68	15.24
40	12	50.70	17.68	15.24



Recommended P.C.B. Layout

Description

Name: **AXX-LC-TR-R**
 Low Cost IC Socket
 2.54mm, Retentive Leg



THIS DRAWING IS UNPUBLISHED
 Copyright 2005 by Assmann Electronic Components All International Rights Reserved
 This drawing is a controlled document for Assmann Electronics, Inc. It is subject to change and the controlling engineering organization should be contacted for the latest revision.