

Excellent Integrated System Limited

Stocking Distributor

Click to view price, real time Inventory, Delivery & Lifecycle Information:

[TDK Corporation](#)

[DEA162450BT-2139A1](#)

For any questions, you can email us directly:

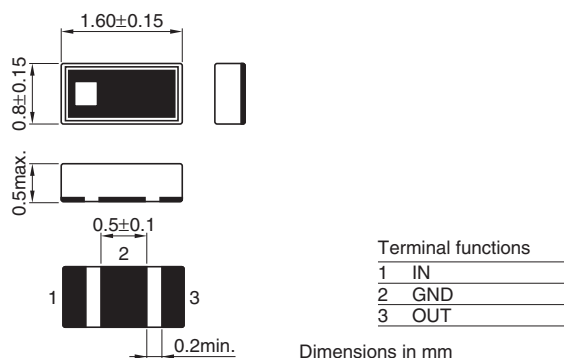
sales@integrated-circuit.com

Multilayer Chip Band Pass Filters For 2.4GHz W-LAN/Bluetooth

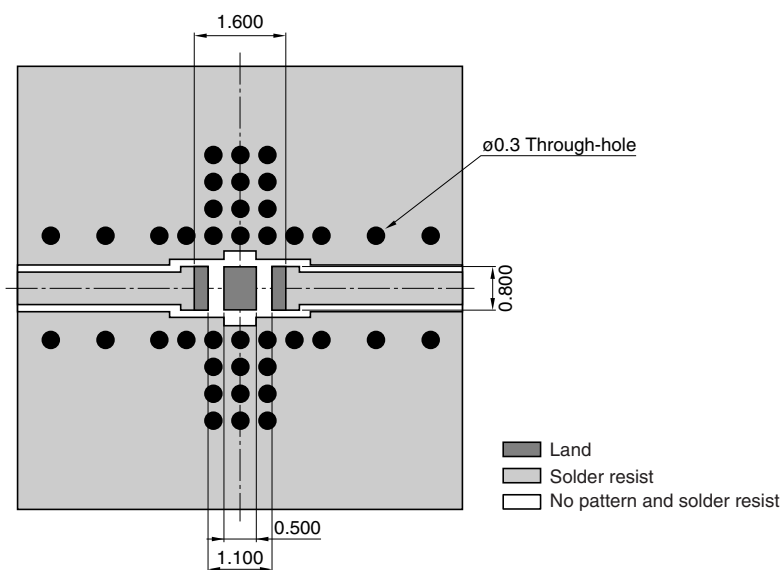
Conformity to RoHS Directive

DEA Series DEA162450BT-2139A1

SHAPES AND DIMENSIONS



RECOMMENDED PC BOARD PATTERNS



Line width be designed to match 50Ω characteristic impedance depending on PCB material and thickness.

ELECTRICAL CHARACTERISTICS

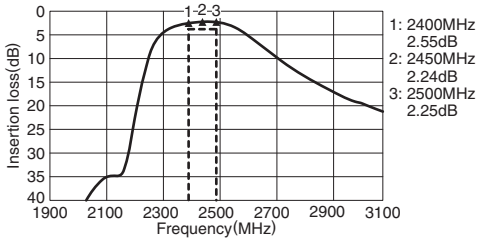
Item			Typical value
Frequency range(Pass band)		2400 to 2500MHz	2400 to 2500MHz
Insertion loss	[+25°C]	3.0dB max.	2.6dB
	[-40 to +85°C]	—	—
VSWR	[2400 to 2500MHz]	2.32 max.	1.5
	[869 to 894MHz]	34dB min.	42dB
	[925 to 960MHz]	33dB min.	41dB
	[1570 to 1580MHz]	30dB min.	39dB
	[1710 to 1785MHz]	30dB min.	42dB
Attenuation	[1805 to 1850MHz]	30dB min.	45dB
	[1930 to 1990MHz]	30dB min.	41dB
	[2110 to 2170MHz]	25dB min.	30dB
	Operating	-40 to +85°C	
Temperature range	Storage	-40 to +85°C	

• Ta: +25°C

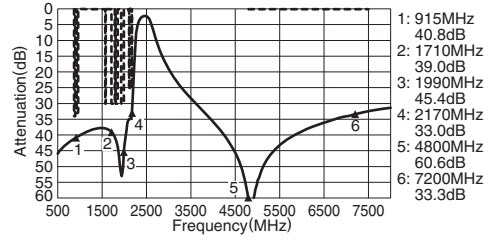
• Conformity to RoHS Directive: This means that, in conformity with EU Directive 2002/95/EC, lead, cadmium, mercury, hexavalent chromium, and specific bromine-based flame retardants, PBB and PBDE, have not been used, except for exempted applications.

FREQUENCY CHARACTERISTICS

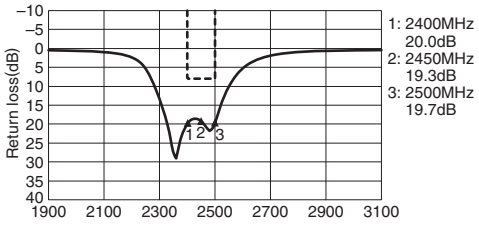
INSERTION LOSS



ATTENUATION



RETURN LOSS



VSWR

