

Excellent Integrated System Limited

Stocking Distributor

Click to view price, real time Inventory, Delivery & Lifecycle Information:

[Harting](#)
[21010000010](#)

For any questions, you can email us directly:
sales@integrated-circuit.com

Alle Rechte vorbehalten/ All rights reserved

5

4

3

2

1

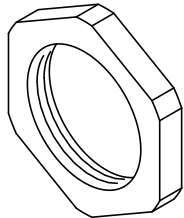
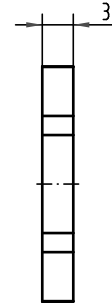
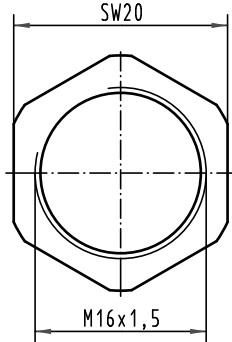
D



C

B

A

width across flats 20



 All Dimensions in mm Original Size DIN A 4			Techn. Character.			Nicht tolerierte Maß/Free size tolerances		
			Dat. 08.03.04	Name DY	Maßstab/Scale 2:1	Kontermutter M16x1,5-Metall Locking nut M16x1,5-metal		
			Insp. SR	Stand.				
EC01875	13.02.09	DY	HARTING Electronics GmbH & Co. KG D-32339 ESPELKAMP			TB 21 01 000 0010		
411050	25.05.04	DY						
410920						Blatt/ page		
Mod.	Dat.	Name				Sub.		