

Excellent Integrated System Limited

Stocking Distributor

Click to view price, real time Inventory, Delivery & Lifecycle Information:

[Harting](#)
[09000005014](#)

For any questions, you can email us directly:
sales@integrated-circuit.com

Alle Rechte vorbehalten/ All rights reserved

5

4

3

2

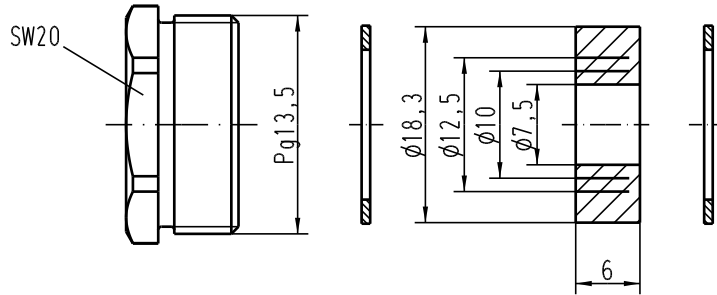
1

D



C

B

A



Kabel- ϕ /cable- ϕ : min.6,5; max.13,5

 All Dimensions in mm Original Size DIN A 4			Techn. Character.			Nicht lotierte Masse/ free size tolerances			
				Dat.	Name	Massstab/Scale		Verschraubung Metall/ cable sealing metal für Standard-Gehäuse; Pg13,5 / for standard housings; Pg13,5	
			Detail.	7.12.98	Kö	2:1			
			Insp.		SDT.				
			Stand.						
410862	23.11.04	Loe.	HARTING Electric GmbH & Co. KG					TB 09 00 000 5014	Blatt/ page
24863			D-32339 Espelkamp						
Mod.	Dat.	Name				Sub. TB 09 00 000 501. v. 1.2.93			