

## Excellent Integrated System Limited

Stocking Distributor

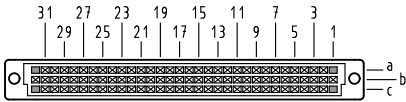
Click to view price, real time Inventory, Delivery & Lifecycle Information:

[Harting](#)  
[09032964845](#)

For any questions, you can email us directly:  
[sales@integrated-circuit.com](mailto:sales@integrated-circuit.com)

Alle Rechte vorbehalten. All rights reserved.

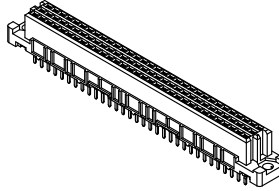
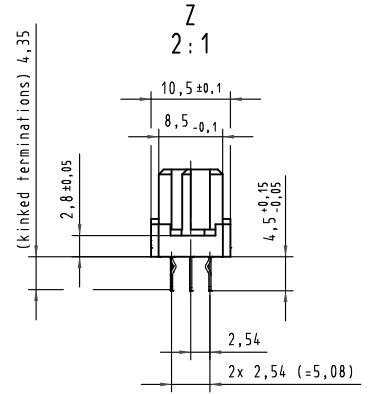
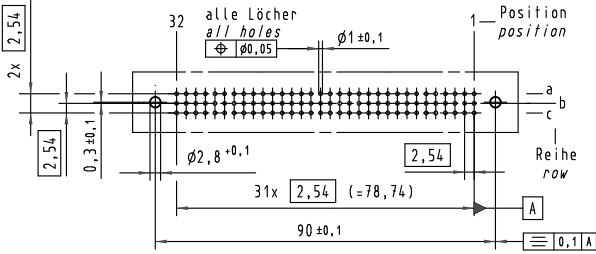
**X**  
Kontaktanordnung  
contact arrangement



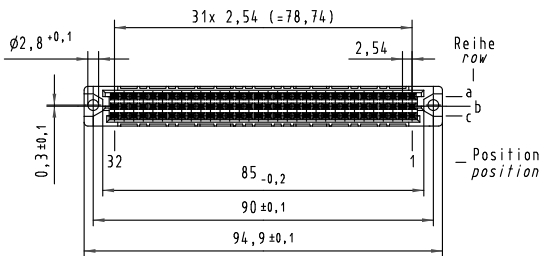
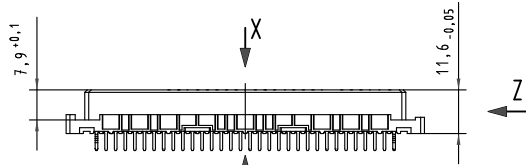
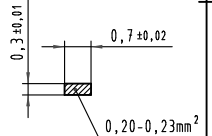
92 Einlöt-Kontakte  
4 kinked Einlöt-Kontakte  
92 solder-contacts  
4 kinked solder-contacts

- = Einlöt-Kontakt  
= solder-contact
- ▣ = kinked Einlöt-Kontakt  
= kinked solder-contact
- = Kontaktposition nicht belegt  
= position without contact

**X**  
(Lochbild)  
(board drillings)



**W**  
10:1  
Querschnitt der  
Lötanschlüsse:  
cross-section of  
solder terminations:



09 03 296 4845	-	min. 1,6µm (64µin) Au über/over min. 2,5µm (100µin) Ni
09 03 296 7845	3	Au über/over Ni
09 03 296 6845	2	Au über/over Ni
09 03 296 2845	1	Au über/over Ni
Bestell-Nr. part-no.	Anforderungsstufe nach IEC performance level acc.to IEC	Kontaktoberfläche contact plating

All Dimensions in mm Original Size DIN A 3		Techn. Character. IEC 60603-2		Nicht tolerierte Maß/Free size tolerances IEC 60603-2	
		Det.	Name	Maßstab/Scale	
		Detail: 06.08.99	Hm	1:1	
		Insp. 06.08.99	Pa.	2:1	
34158	19.01.07	LehT	Stand.		
30816	21.02.02	Rie.			
26095					
Mod.	Dat.	Name	HARTING Electronics GmbH & Co. KG D-32339 ESPELKAMP		
				TB 09 03 296 x845	
				Sub.	